



14 Peace Cottages, Old Coleham, Belle Vue, Shrewsbury SY3 7BT

2 bedroom terraced house—£200,000 Freehold

14 Peace Cottages, Old Coleham, Belle Vue, Shrewsbury SY3 7BT

Coopergreenpooks.co.uk

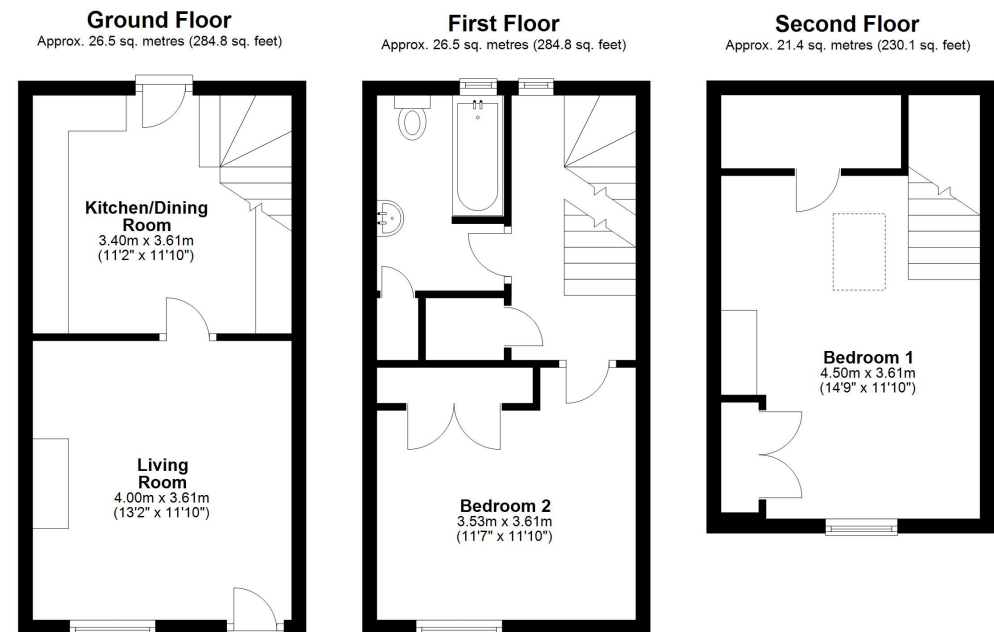
£200,000 Freehold—2 bedroom terraced house

sales@cgpooks.co.uk

This attractive mid terraced house of character has been significantly improved over recent years, offering well-proportioned accommodation over three floors, situated within a sought-after residential area, just a short walk from the Quarry Park and town centre, while benefitting from a private rear garden.

KEY FEATURES

- Good sized living room with feature fireplace and built in cupboard
- Modern re-fitted kitchen, with integrated appliances, useful under stairs storage and part glazed door to the rear garden
- On the first floor is a double bedroom with built in wardrobes and a separate family bathroom with shower
- There is a further large double bedroom on the second floor, also having built in wardrobes, eaves storage and windows to two elevations
- Gas fired central heating and partial double glazing
- Private rear garden, paved and gravelled for easy maintenance, with external brick store and gated access to the rear
- This property has been fully refurbished within the last five years, and has just been redecorated and carpeted throughout
- Situated within a fantastic location, just a short walk from Coleham and its excellent range of amenities, the Quarry Park and River Severn, as well as being less than a ten-minute walk from the heart of the town centre
- Sold with no upward chain



Total area: approx. 74.3 sq. metres (799.7 sq. feet)







14 Peace Cottages, Old Coleham, Belle Vue, Shrewsbury SY3 7BT

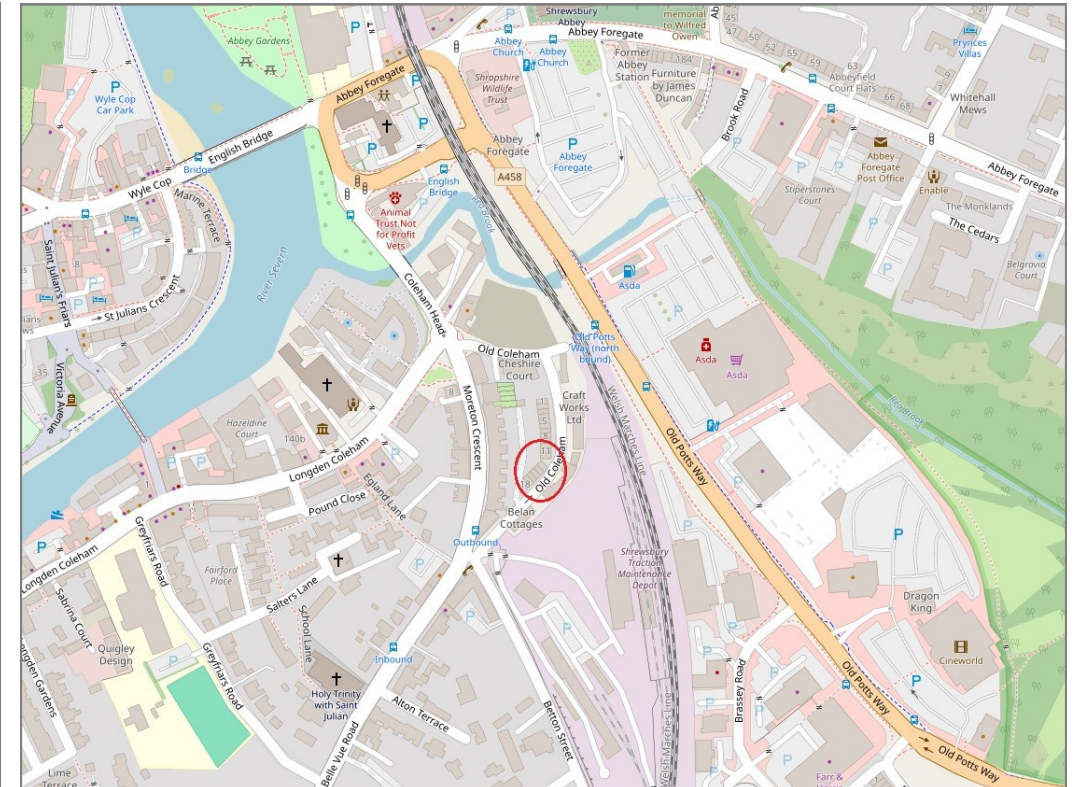
£200,000 Freehold—2 bedroom terraced house

sales@cgpooks.co.uk

rightmove

onTheMarket.com

RICS
Regulated by RICS



BOUNDARIES NOT CONFIRMED

Tenure	Freehold
Local Authority	Shropshire Council
Council Tax	Band B
EPC Band	Band E
Services	All mains services are connected

Expert mortgage advice available

3 Barker St, Shrewsbury SY1 1QF

Cooper Green Pooks
01743 276666



Your home may be repossessed if you do not keep up repayments on your mortgage.

There may be a fee for mortgage advice. The actual amount you pay will depend upon your circumstances. The fee is up to 1% but a typical fee is 0.3% of the amount borrowed.

14 Peace Cottages, Old Coleham, Belle Vue, Shrewsbury SY3 7BT

Coopergreenpooks.co.uk

£200,000 Freehold—2 bedroom terraced house

sales@cgpooks.co.uk



IMPORTANT NOTICE: Cooper Green Pooks for themselves and for the lessors or vendors of this property whose agents they are give notice that: 1 No appliances, services or service installations have been tested and no warranty as to suitability or serviceability is implied. Any prospective purchaser or lessee is advised to obtain verification from their surveyor or solicitor. 2. The particulars are set out as a general outline only for the guidance of the intended purchasers or lessees and do not constitute, nor constitute part of, an offer or contract. 3. All descriptions, reference to condition and necessary permissions for use and occupation and other details are given in good faith and are believed to be correct but any intending purchasers or lessees should not rely on them as statements or representation of fact but satisfy themselves by inspection or otherwise as to the correctness of each of them. 4. No person in the employment of Cooper Green Pooks has any authority to make or give any representation or warranty whatsoever in relation to this property. 5. All rentals and prices are quoted exclusive of Stamp Duty, legal and surveyors fees and any other associated purchasers or lessees costs. 6. Floor plans are indicative only and should not be relied on. 7. The plan showing the boundary of the property is indicative only and has not been checked against the legal title so should not be relied on. 8. All dimensions, floor areas and site areas are only approximate and should not be relied on. Dimensions are generally maximum room dimension.