



## Tachbrook Street, SW1V

£700,000

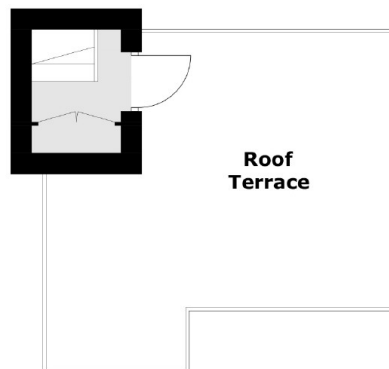
A generously proportioned three bedroom triplex apartment set on the top floor of the sought-after Lillington Gardens development. The home benefits from excellent natural light, a separate kitchen and reception room, and a large private terrace.

Forsyth House is ideally situated within the Lillington Gardens development, between Vauxhall Bridge Road and Tachbrook Street. Excellent transport links are close at hand, with Pimlico Underground Station nearby and Victoria offering Underground, mainline, bus, and coach services providing direct connections to the City, the West End, Gatwick Airport, and beyond.

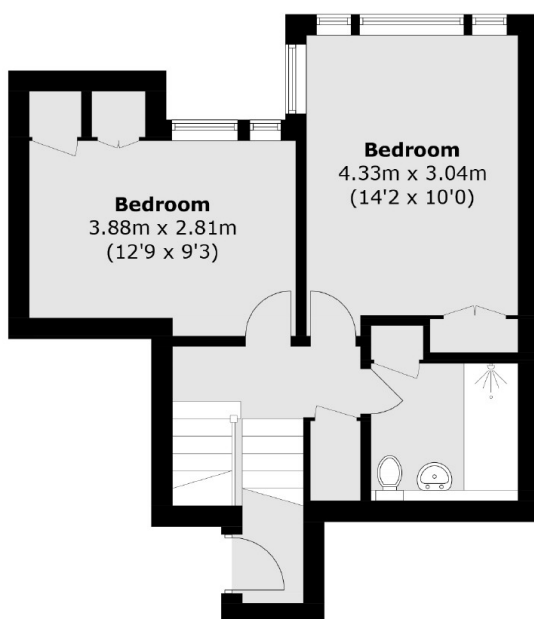
### Features

Across Three Levels  
Private Roof Terrace  
Excellent Location  
No Onward Chain  
c. 172 Year Lease

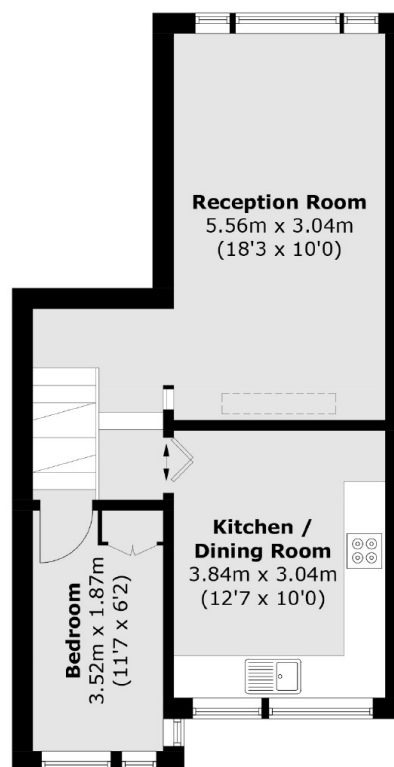
# Tachbrook Street, London, SW1V



**Fifth Floor**



**Third Floor**



**Fourth Floor**

Total area (approx.): 81.4 sq. m (875.9 sq. ft)  
Roof Terrace: 18.9 sq. m (203.4 sq. ft)