

IVERNA GARDENS, W8



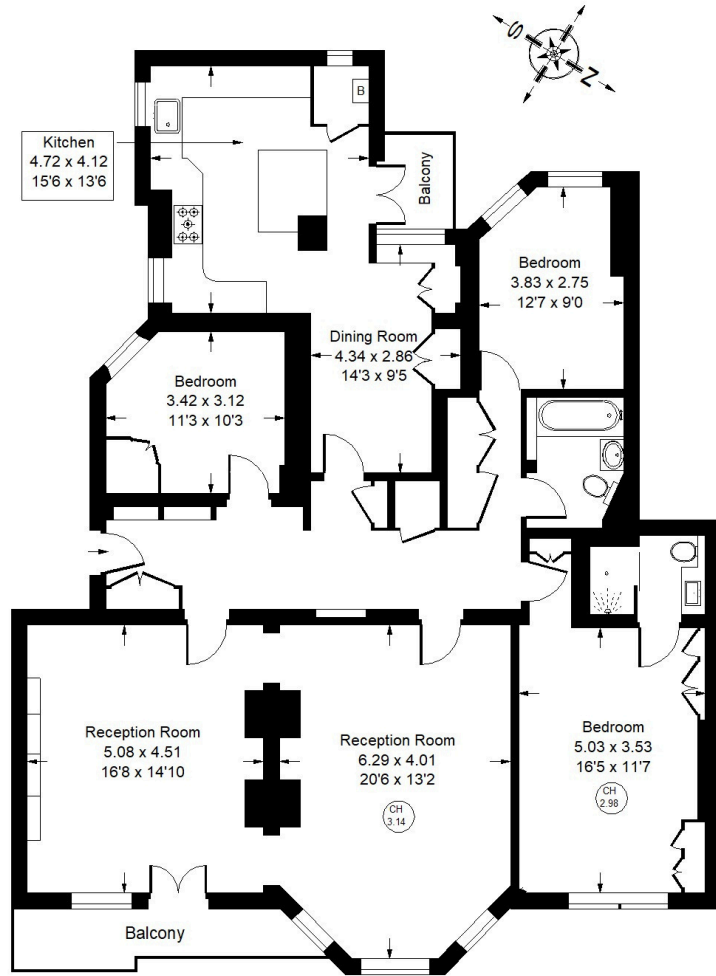


Iverna Gardens, W8

A three bedroom apartment on the first floor (with lift) located in a well established red brick portered mansion building close to High Street Kensington. The apartment has great proportions with the two large reception rooms offering excellent living and entertaining space. There is also a separate dining room and bespoke fitted kitchen. The principal bedroom has the en-suite shower room and built-in storage. The flat further benefits from a private balcony and views overlooking the communal garden square and arguably Kensingtons prettiest white church St. Sakis. Iverna Gardens is located just south of Kensington High Street and therefore benefits from the excellent transport and shopping facilities of the area. Holland Park and Kensington Gardens are also nearby. Nearby public transport links include High Street Kensington Station (Circle and District Lines) and Gloucester Road Station (Piccadilly, District and Circle Lines) for journeys around central London.



Approx. Gross Internal Area
= 165.32 sq m / 1,779 sq ft



First Floor



Iverna Gardens, W8 - Share of Freehold Local Authority - Royal Borough of Kensington & Chelsea

- Three Bedrooms
- Two Reception Rooms
- Lift and Porter
- EPC Rating = C
- Council Tax Band = H



Whilst every attempt has been made to ensure the accuracy of the floor plan, measurements are approximate and not to scale. No guarantee is given on the total square footage of the property quoted on the plan. Figures given are for guidance. Plan is for illustration purposes only, not to be used for valuations.