



Wapping High Street, E1W

£600 Per week

A one-bedroom, two-level apartment on the top floor of Carronade House, comprising a semi-open reception, a modern kitchen with built-in appliances, a spacious bedroom, and two bathrooms. The property is offered unfurnished, with underground parking available.

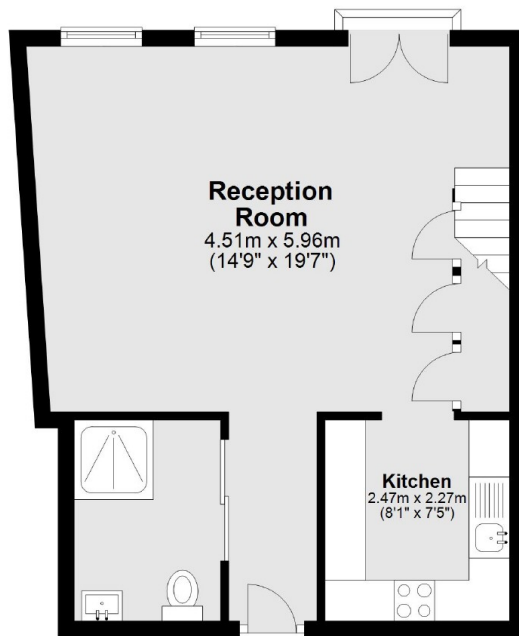
Carronade House is opposite Wapping High Street DLR station and a short walk from the Prospect of Whitby.

Features

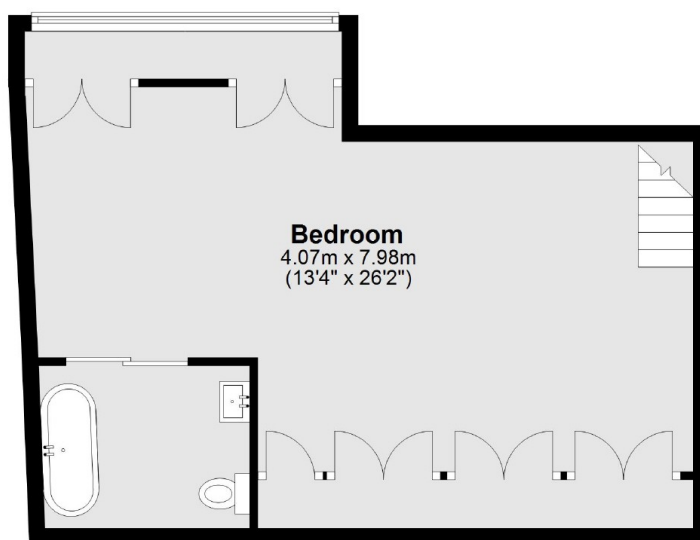
- One Bedroom
- Two Bathrooms
- Split Over Two Levels
- Over 900 Square Foot
- Parking Available
- Unfurnished

Wapping High Street, London, E1W

Second Floor



Third Floor



Total area: approx. 83.7 sq. metres (901.0 sq. feet)