

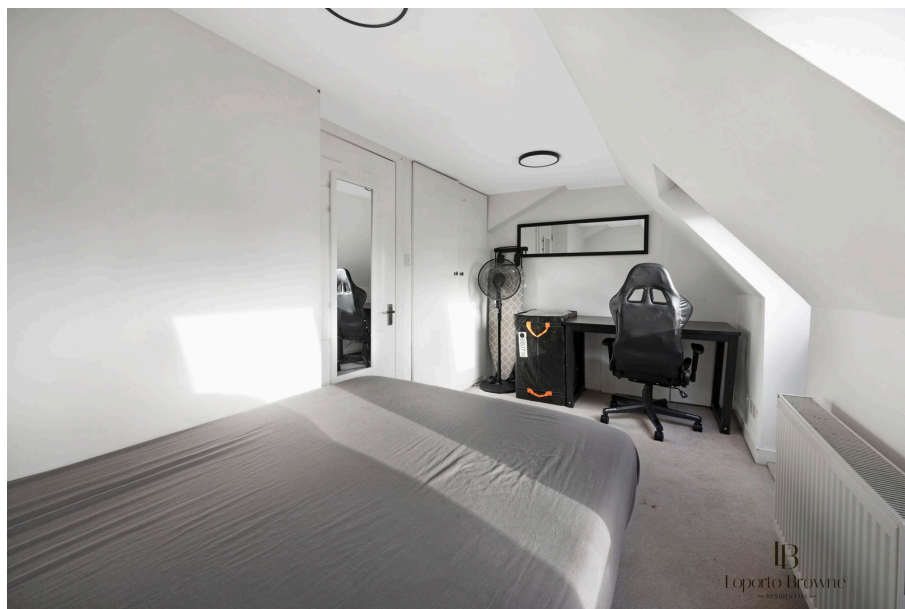


Loporto Browne  
— RESIDENTIAL —

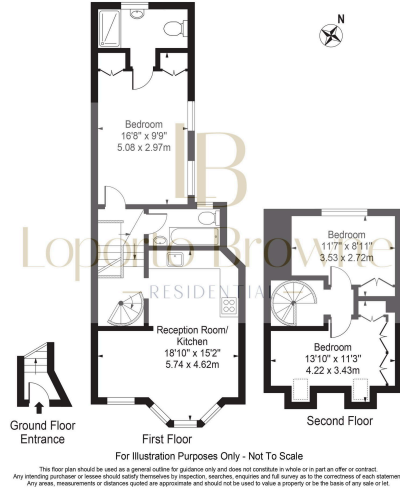
# Redfern Road, NW10

£2,015PCM (Deposit: £2,325)

🛏️ 3 🪑 2 🚗 1



Redfern Road  
 Approx. Gross Internal Area 780 Sq Ft - 72.46 Sq M



Tax Band: Furnished: Not specified

Property to Let: 3-Bedroom, 2-Bathroom Split-Level maisonette

This spacious and well-presented 3-bedroom, 2-bathroom split-level furnished maisonette is located in a desirable area with excellent transport links, offering easy access to local amenities and city connections. The property features generously sized rooms, a modern kitchen, and two stylish bathrooms. Ideal for families or professionals, the maisonette provides a comfortable and convenient living space in a sought-after location. Early viewing is recommended!

