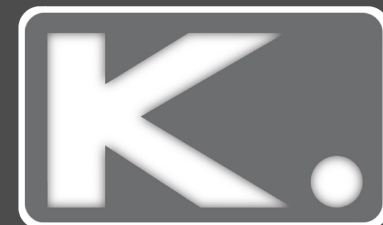




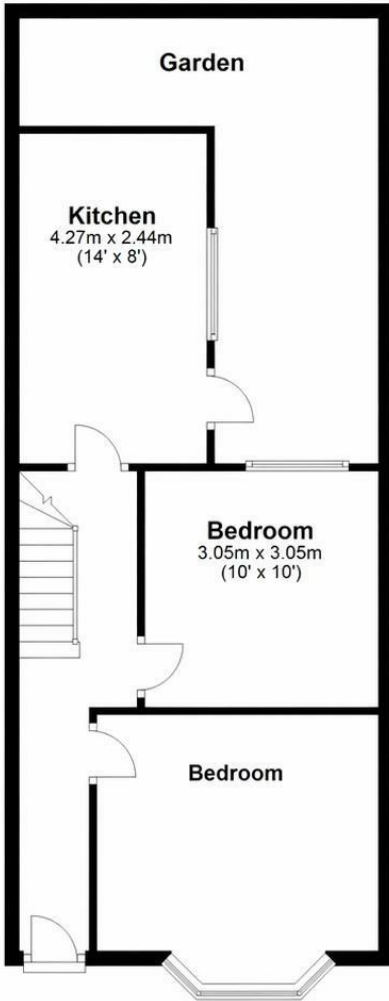
**4 Bed  
House - Terraced  
located in Brighton**

**£600,000**



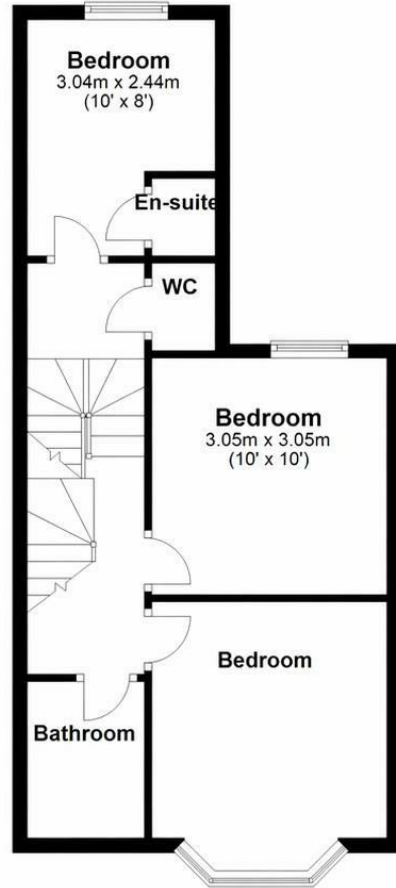
### Ground Floor

Approx. 56.5 sq. metres (608.6 sq. feet)



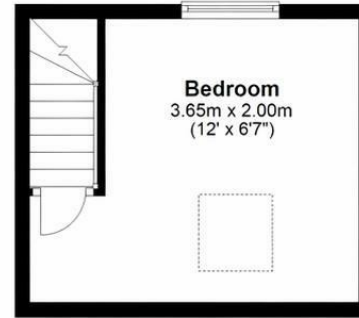
### First Floor

Approx. 39.9 sq. metres (429.2 sq. feet)

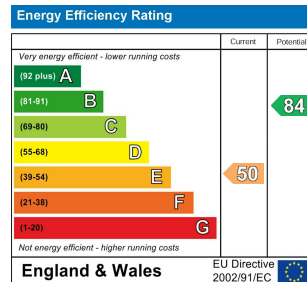


### Second Floor

Approx. 15.5 sq. metres (167.3 sq. feet)



Total area: approx. 112.0 sq. metres (1205.2 sq. feet)



### DIRECTIONS

### CONTACT

Kendrick Property Services - Brighton  
 10-12 Lewes Road  
 Brighton  
 East Sussex  
 BN2 3HP

E: [sales@kendrickpropertyservices.co.uk](mailto:sales@kendrickpropertyservices.co.uk)  
 T: 01273 600162  
[www.kendrickpropertyservices.co.uk](http://www.kendrickpropertyservices.co.uk)

