



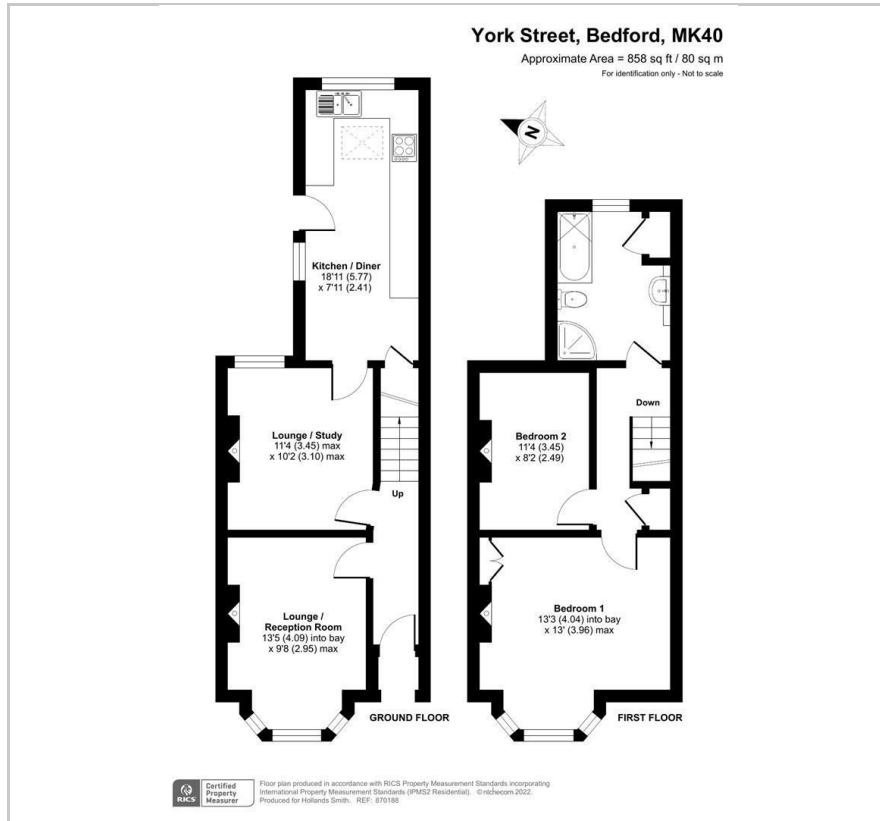
43 York Street

, Bedford, MK40 3RJ

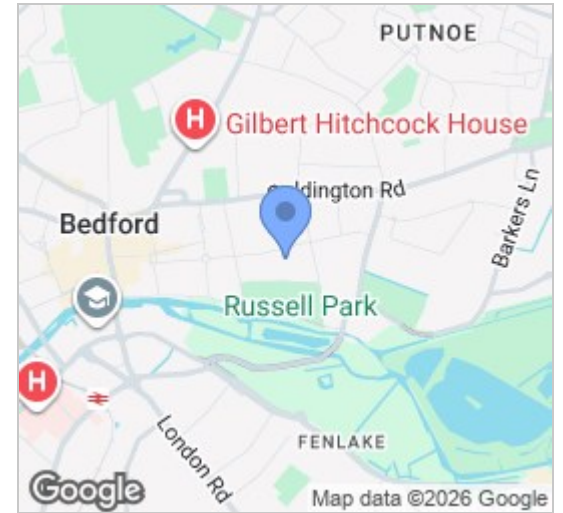
Offers Over £360,000



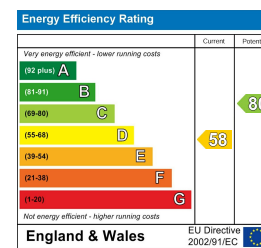
Floor Plan



Area Map



Energy Efficiency Graph



Viewing

Please contact our Bedford Office on 01234 216612 if you wish to arrange a viewing appointment for this property or require further information.



This period bay fronted home is situated within the popular 'Castle Quarter', just a few steps from Russell Park and the Embankment. Available with no upward chain, the accommodation provides separate sitting and dining rooms, two bedrooms and a large first floor bathroom with separate shower cubicle. There is also a kitchen/breakfast room with plenty of storage and workspace as well as built in appliances including a double oven and dishwasher. Most of the windows are double glazed, there is gas to radiator heating from a combination boiler and further features include fireplaces to the principle rooms, stripped wood floors and doors and shutters have been added to the front window. Outside, there is a low maintenance paved garden to the rear. In all, this is a well-kept period property in ready-to-move-into condition.

In addition to the park and Embankment, there is a range of eateries along Castle Road with cafes, coffee shops and restaurants all on offer. Further specialist shops include a butcher, bakery and home improvement/antique stores. Bedford town centre is a short walk away and offers a wider choice of shops, bars and restaurants as well as a mainline rail station with fast links into London St Pancras. EER: D



163 Castle Road, MK40 3RT

Tel: 01234 216612

www.hollandsmith.co.uk