



**Montaigne Close, SW1P**  
**£2,000,000**

**Dexters**



## Montaigne Close, SW1P

A rare opportunity to acquire an exceptional four-bedroom lateral penthouse at Montaigne Close, a quiet, well-managed development in the heart of Westminster, within walking distance of the river, Tate Britain, St James's Park, and the best of Pimlico and Victoria.

Distinctive butterfly ceilings create remarkable ceiling height throughout, and floor-to-ceiling glazing floods every room with natural light. The property has been renovated to an owner's specification by an interior designer, with every detail carefully considered and beautifully executed.

The expansive open-plan reception flows from kitchen to dining to sitting area, laid with beautiful chevron wooden flooring and centred on a bespoke kitchen with quartz worktops, Neff and Miele appliances, and a Quooker boiling water tap. Full-length sliding doors open onto a heated balcony with direct views towards Battersea Power Station, with a balcony garden designed by The Garden Club. The bedrooms are well-served by bespoke fitted wardrobes, with the principal bedroom benefiting from an en suite shower room, and the flat is exceptionally well-planned, with built-in storage throughout and a utility room.

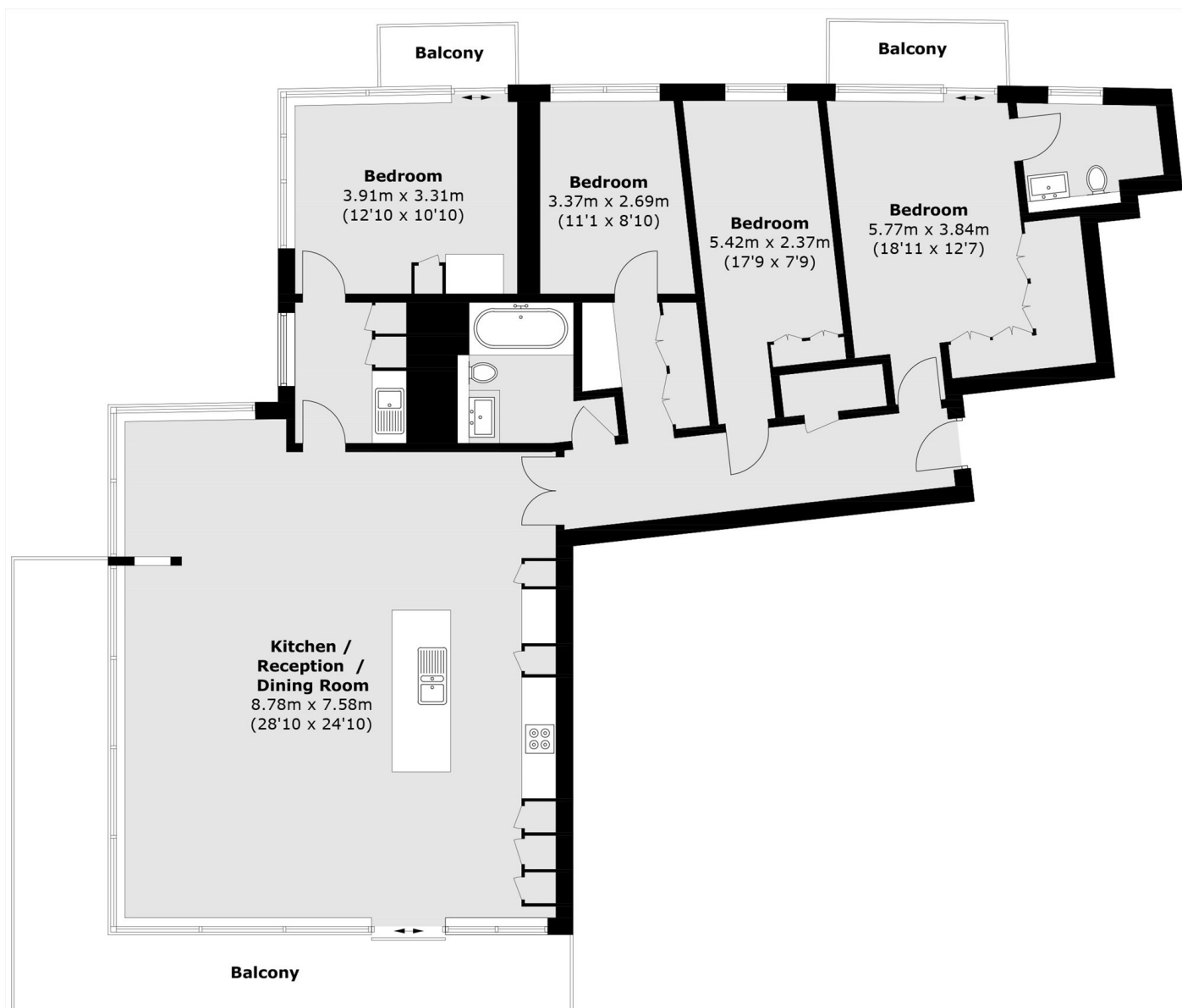
Fully ducted air conditioning, a separate fresh air system, and underfloor heating to the bathrooms complete the specification. The building offers 24/7 concierge, a fully equipped gym, sauna, and two secure underground parking spaces, particularly valuable for a central London address, with residents benefiting from a congestion zone discount.

### Features

- Four Bedrooms
- Two Bathrooms
- Private Balcony
- Lateral Living Space
- 24-Hour Concierge
- Sixth Floor



# Montaigne Close, London, SW1P



## Sixth Floor

Total Internal Area : 155.7 sq. m (1,676.0 sq. ft)

Balcony : 30.0 sq. m (322.9 sq. ft)

**Dexters**

Westminster  
50 Churton Street  
London  
SW1V 2LP  
Sales  
020 7590 9570

Energy Rating: Tbc. We aim to make our particulars both accurate and reliable. However they are not guaranteed; nor do they form part of an offer or contract. If you require clarification on any points then please contact us, especially if you're traveling some distance to view. Please note that appliances and heating systems have not been tested and therefore no warranties can be given as to their good working order.

 **RICS** | Regulated  
Estate Agent  
and Letting Agent

dexters.co.uk