



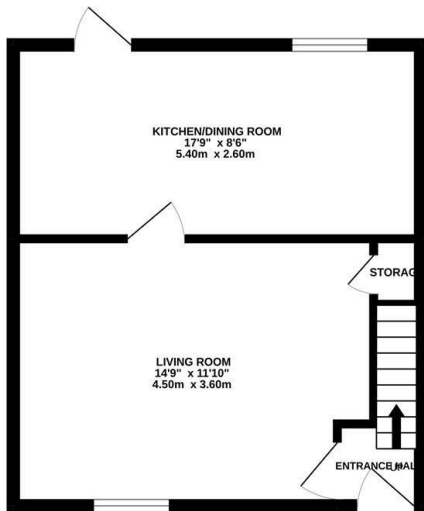
Eversley Road, St. Leonards-On-Sea TN37 6QD

Offers in excess of £275,000

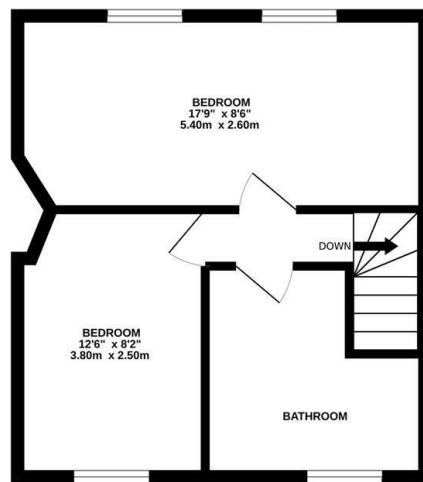


A charming two bedroom END OF TERRACE HOUSE set in a sought after location close to Silverhill and Alexandra Park. It's within immediate reach of local primary schools, shops and good transport links making it perfect for family life. Spanning two storeys the accommodation here is arranged as a WELL PROPORTIONED living room with a front aspect and BUILT-IN STORAGE, this leads through to a bright EAT-IN KITCHEN spanning the full width of the property, fitted with modern built in units and offering plenty of space for a full dining table along with access to the REAR GARDEN. The first floor comprises of TWO BEDROOMS with the primary measuring an impressive 17'9 x 8'6, together with a modern family bathroom with bath and shower over. Externally, the rear garden is a real feature here benefiting from an area of patio followed by an EXPANSE OF LAWN and two insulated OUT-BUILDINGS with power. Being sold with NO ONWARD CHAIN this fantastic property would make the PERFECT FIRST TIME OR FAMILY HOME.

GROUND FLOOR
362 sq.ft. (33.6 sq.m.) approx.



1ST FLOOR
358 sq.ft. (33.2 sq.m.) approx.



TOTAL FLOOR AREA : 719 sq.ft. (66.8 sq.m.) approx.

Whilst every attempt has been made to ensure the accuracy of the floorplan contained here, measurements of doors, windows, rooms and any other items are approximate and no responsibility is taken for any error, omission or mis-statement. This plan is for illustrative purposes only and should be used as such by any prospective purchaser. The services, systems and appliances shown have not been tested and no guarantee as to their operability or efficiency can be given.

Made with Metropix ©2022.

