



32 WHITING STREET
Bury St. Edmunds | Suffolk





Beautiful light and airy sitting room with an attractive red brick feature fireplace and clever floor-to-ceiling glazed partition creates a cocooning reception hall that also retains an open-plan feel

32 WHITING STREET

BURY ST. EDMUNDS | SUFFOLK

- Remodelled & extended four-bedroom Tudor townhouse – only 25 mins commute of RAF Lakenheath & Mildenhall
- Central location within the historic heart of Bury St. Edmunds, town centre walking distance & A14 ease-of-access
- Cleverly designed reception hall & pleasing circular flow of living spaces including study/snug & sitting room
- Wondrous attic bedroom with bathroom, first floor shower room serving principal bedrooms & ground floor shower room
- Open-plan kitchen / breakfast room with a useful separate utility room & wash with natural light from two roof lanterns
- Low-maintenance fully enclosed brick & flint walled courtyard garden with sun terrace & two tier landscaping
- Abundance of storage from large wardrobes, attic space to cellarage
- **Blinds and curtains are fitted throughout**
- **The property has the added benefit of a garage for off-street parking in addition to Zone D permit parking



Enchanting town centre Tudor home with courtyard garden, rear extension, cellar & converted attic

Prominently situated in the medieval grid of the town centre, this 16th century four-bedroom house remains embellished with many period features. Notably the front jetty which was symbol of wealth and status. The property underwent significant remodelling to include an extension at the rear now forming the more modern open-plan kitchen / breakfast room with connecting separate utility room – both spaces are awash with natural light from two roof lanterns. The current landlord has carried out upgrading to a ground floor shower suite. Of particular note is the wealth of timbers preserved and now on display, especially the converted attic room (formerly a home yoga studio), the inviting and cleverly designed entrance hall that leads to a pleasing circular flow of the ground floor living rooms – a welcoming sitting room with its red brick feature fireplace and adjacent study / snug – the Jacobean wood panelling that reveals a hidden staircase to the top floor and the proportions of the principal bedroom. There property benefits from an abundance of storage solutions with its cavernous eaves space and deep bedroom wardrobes. A wine cellar fitted with racks is the perfect wine store.

French doors open to a low-maintenance courtyard garden is fully enclosed by an attractive brick and flint wall which envelopes two tier landscaping incorporates a sun terrace and raised flower beds with an irrigation system. The property has the added benefit of a garage for off-street parking in addition to Zone D permit parking is in operation. Tenants can enjoy the award-winning Abbey Gardens with its parkland setting and newly laid tennis courts – all only a very short walk away.

32 Whiting Street is conveniently located within the historic Cathedral town of Bury St. Edmunds and is situated in arguably one of the most desirable residential enclaves and conservation areas (the medieval Norman Grid (formed by intersecting Churchgate, Guildhall & Westgate streets). The bars, restaurants and independent boutique shops of Abbeygate Street and the Market Square are nearby. As is the independent cinema and rare surviving regency Theatre Royal both within walking distance. Excellent A14 access is afforded by Westgate Street via Southgate Street. Refer to our Situation page to discover more.

ACCOMMODATION

WITH APPROXIMATE MEASUREMENTS

32 Whiting Street displays a host of attractive period features well-blended with modern comforts following restoration and a more recent upgrading. Accommodation measures approximately 1916 ft² (178.1 m²) and will suit a broad range of tenants, including young professionals or visiting USAF personnel – all who seek the convenience of town centre living, coveted off-street parking, garaging and outdoor amenity with its enclosed brick and flint courtyard garden.

Ground Floor

RECEPTION HALL 10'1" x 4'6" (3.09m x 1.39m)

An inviting red panelled front door with alarm system opens into a novel and wide Reception Hall with its cleverly designed floor to ceiling glazed wall partition that gives an impressive sense of spaciousness and additional light that contribute to a practical entrance area. Wall-mounted meter cupboard. Thermostat. Stairs rising to First Floor. Opening to useful vestibule. Original parquet wood floor with inset coir mat. Recessed lighting. Radiator. Doors to:

GROUND FLOOR SHOWER ROOM

Newly refurbished ground floor shower room. Suite comprising walk-in rain shower with separate attachment, wall-mounted basin with mixer tap and wc. Extractor fan. Flush ceiling light. Partially tiled walls and vinyl floor.

SITTING ROOM 17'9" x 13'7" (5.41m x 4.15m)

A glazed door opens into a large Sitting Room with various period elements taking centre stage, which include an attractive red brick feature fireplace with oak bressummer and brick hearth, exposed ceiling beams and a wide sash window to front aspect in addition to another. Three table lamp points TV and phone points. Radiator. Full-height glazed door to:



Wide and welcoming reception hall with parquet wood floor



Study / snug / dining room with various mood lighting



Open-plan kitchen / breakfast room with arched opening to separate utility room



The circular flow to the ground floor is a nice touch as are the rear skylights

Ground Floor (cont'd)

SNUG / STUDY / DINING ROOM 11'11" x 10'6" (3.62m x 3.19m)

Either accessed from the Sitting Room or step down from the Kitchen/Breakfast room is a delightful dining room that can double as a comfortable study or snug with its high ceilings and ambient light sources from two wall sconces, picture and pendant lights. TV point. There is an alcove storage niche fitted with illuminated glazed display shelves and cabinetry beneath (currently used as a home mini bar). Arched opening to:

OPEN-PLAN KITCHEN / BREAKFAST ROOM 13'9" x 9'5" (4.20m x 2.88m)

An open-plan kitchen/breakfast room that is also accessible from a Reception Hall via a full-height glazed door. The kitchen area is arranged in a U-shape layout incorporating a breakfast bar that divides the dining area and comprising base and wall-mounted cabinetry with new work surfaces inset with *Franke* sink, drainer and mixer tap in addition to task lighting above. Appliances include: *Hotpoint* electric oven and grill with cooking extractor above, *Zanussi* dishwasher, *Beko* fridge/freezer, *Baumatic* microwave fitted at eye-level. Window with garden view and French doors to the sun terrace. Awash with natural light from a large square skylight. TV point. Spotlights and pendant light. Part wood floor and part carpet. Radiator. Door to cellar. Arched opening to:

UTILITY ROOM 14'4" x 5'4" (4.38m x 1.63m)

Useful separate utility room fitted with base and wall units, counter top and stainless steel sink and drainer with mixer tap. Space and plumbing for washing machine, condenser dryer and additional fridge/freezer. Water softener. Wall-mounted boiler. Double doors to further storage. Skylight. Strip light. Wood floor.

Basement Level

CELLAR 12'2" x 10'6" (3.70m x 3.20m)

The unconverted cellar is ideal for wine storage (fitted with a rack system) or ancillary storage. Lighting and power. Brick lined floor and walls with some stone features crowned by an original timber ceiling.

First Floor

Stairs rising to landing space illuminated by an appealing stained glass window. Pendant light. Radiator. Doors to:

BEDROOM ONE 14'6" x 14'1" (4.41m x 4.30m) approx

The large principal bedroom has a wide sash window to the front aspect. Built-in three door wardrobes with separate lighting provides deep storage. Feature fireplace mantelpiece. Exposed studwork. TV point. Pendant light. Radiator.

BEDROOM THREE / STUDY 14'6" x 8'10" (4.42m x 2.68m)

The focal point is an ornate mantelpiece with original cast iron basket feature fireplace. Window to front aspect. Exposed studwork. A wall of Jacobean wood panelling with three doors each end for storage and the central opens to reveal a hidden staircase to the attic suite of rooms. Wall light. Radiator.

BEDROOM FOUR 9'1" x 5'6" (2.76m x 1.68m)

With window overlooking rear garden aspect. Built-in wardrobes with separate lighting and cavernous further storage. Pendant light. Radiator.

SHOWER ROOM

With privacy glazed window to rear aspect, the suite comprises: corner shower cubicle with shower attachment, vanity unit with inset basin, wc. Extractor fan. Shaver point. Partially tiled and with newly laid vinyl floor. Flush ceiling light. Heated towel rail.

Second Floor

Stairs rising to landing area with dormer window and pendant light. Doors to:

BEDROOM TWO 15'5" x 8'10" (4.70m x 2.70m)

An enchanting vaulted bedroom with plethora of exposed studwork and ceiling beams. Window to front aspect. Separate door opens up to cavernous eaves storage. Formerly used as a home yoga studio.

BATHROOM

Suite comprises: corner panelled bath tub with shower attachment, vanity unit with inset basin, wc. Extractor fan. Shaver point. Partially tiled and with newly laid vinyl floor. Recessed ceiling light. Heated towel rail.



Bedroom Three / Study with Jacobean panelling that conceals door to second floor



Wondrous vaulted attic bedroom previously used as a home yoga studio



Nearby amenities: red heather in Cavenham Heath Nature Reserve (left); 7 acre Wyken Vineyard and Leaping Hare restaurant (top right); majestic National Trust Ickworth House and Park (bottom right); oldest surviving Regency playhouse in England, Bury St. Edmunds (centre)



DISCOVER SUFFOLK

Bury St. Edmunds is an extremely attractive and prosperous market town located in the heart of Suffolk. The A14 gives fast access to the east coast ports, Ipswich, Cambridge, the Midlands and to Stansted and Cambridge Airports, as well as London via the M11. The Arc is the town's latest, modern retail outlet and is a popular shopping destination. All major food stores are well-represented, including Waitrose. There is a twice-weekly open-market in addition to a variety of eateries, attractions and places to stay. The Millennium Tower that crowns St. Edmundsbury Cathedral is the landmark. There is plenty on offer to keep families entertained. The Apex Arts Centre is a state-of-the-art live entertainment venue which hosts exhibitions and events. Watch a great performance at the Theatre Royal – the only surviving Regency playhouse in England. Other amenities include a range of health clubs, swimming pools and leisure facilities. Bury St. Edmunds has a real sense of community and is a truly friendly town. Ideally placed to offer a fantastic lifestyle to visiting forces based at RAF Lakenheath and RAF Mildenhall.

Horseracing is at neighbouring Newmarket, a number of interesting golf courses nearby, sailing and water sports on the River Orwell and an outstanding 50 mile (80 km) heritage coastline and an Area of Outstanding Natural Beauty encompassing Aldeburgh and Southwold.

SITUATION



Market Square (town centre walk)	2 mins
A14	1 mile
A11 (M11)	20 (30) miles
Newmarket	18 miles
Ipswich	25 miles
Cambridge	28 miles



Suffolk Heritage Coast
Aldeburgh
(1 hr / 44 miles)



From Bury St. Edmunds
London Kings Cross
(110 mins)
London Liverpool Street
(117 mins)
Cambridge
(41 mins)



London Stansted Airport
(1 hr / 40 miles)
Heathrow Airport
(2 hrs / 95 miles)



There is a wide choice of excellent schooling, both Private and State, within the area.
Private includes: Culford School (1-19); South Lee School (2-13).
State includes: Guildhall Feoffment Primary School (5-11); King Edward VI School (11-18).
University of Suffolk at West Suffolk College - Further Education.



Low maintenance courtyard garden enveloped by a brick and flint wall



Lantern light, outdoor tap and flower bed irrigation system

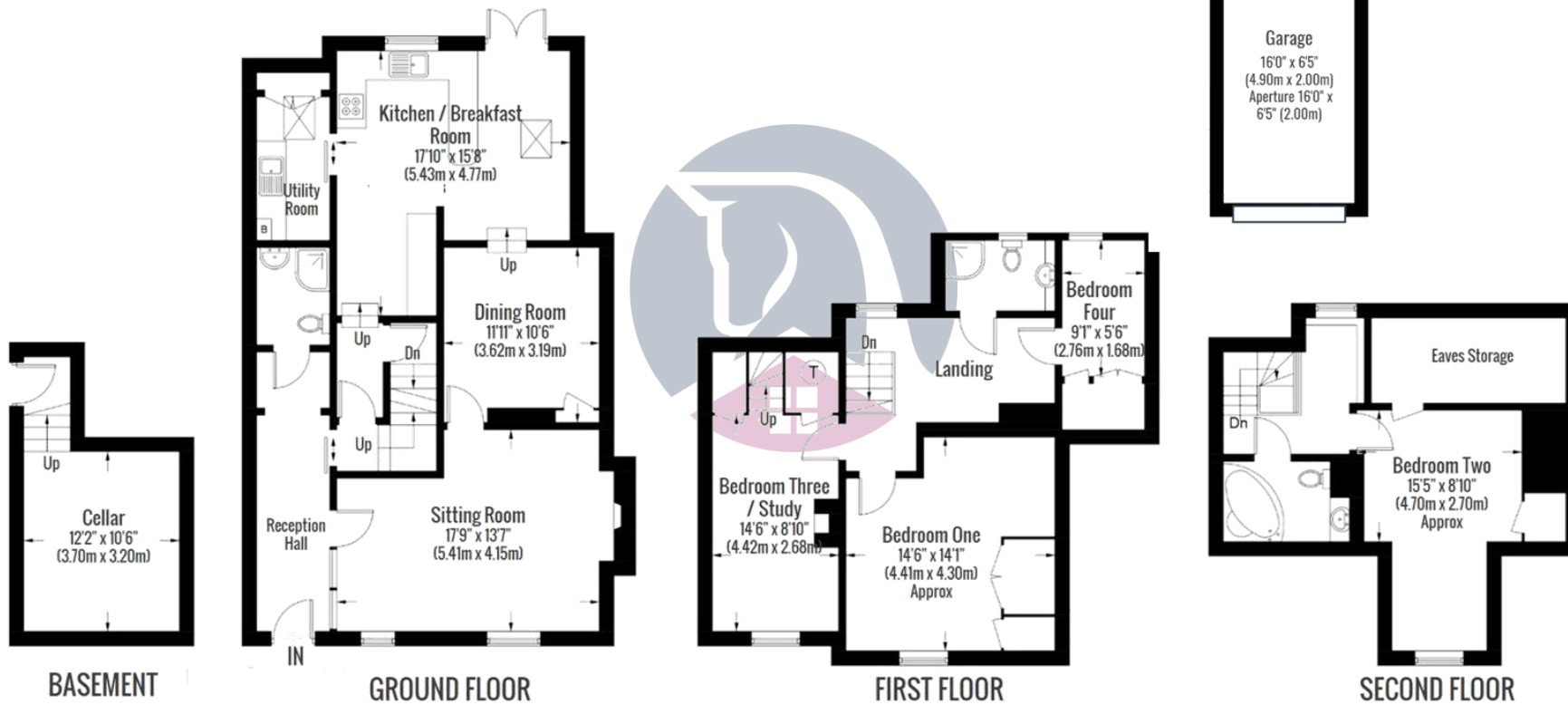
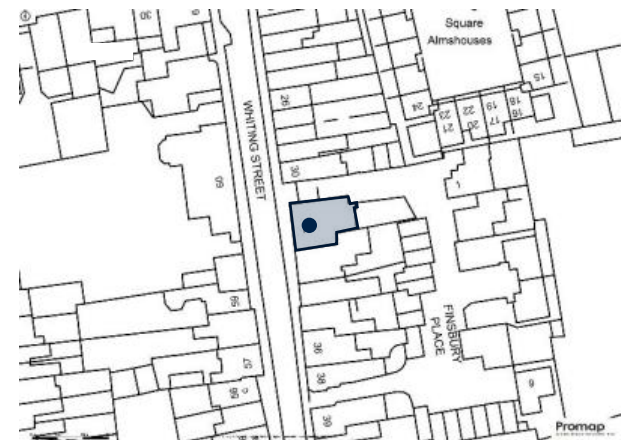
FLOORPLAN

APPROXIMATE GROSS INTERNAL AREA

1768 ft² (164.3 m²) = Excluding eaves storage

148 ft² (13.8 m²) = Basement

1916 ft² (178.1 m²) = Total



This plan is for layout guidance only. Drawn in accordance with RICS guidelines. Not drawn to scale, unless stated. Windows & door openings are approximate. Whilst every care is taken in the preparation of this plan, please check all dimensions, shapes & compass bearings before making any decisions reliant upon them.

GENERAL INFORMATION

TENURE

Property is available to rent from **Saturday 01 August 2026**.

SERVICE

Mains water, drainage, electricity, gas-fired central heating.

LOCAL AUTHORITY

West Suffolk Council (01284 763 233)

Tax band E – £2,797.52 (2026/27) *NB Charge exempt for visiting USAF.*

VIEWING ARRANGEMENTS

Strictly by prior appointment through the landlord's sole managing agent: Whatley Lane. If there is anything of particular importance, please contact us to discuss in advance of the viewing.

DIRECTIONS (IP33 1NP):

From London/Cambridge/Newmarket (by car) exit the M11 at Junction 9 and take the A11 towards Newmarket. Continue on the A14 towards Bury St. Edmunds. Exit the A14 at Junction 44, signposted 'Bury St. Edmunds West'. Take the A134 and follow signposts to the town centre, at the third roundabout head north into Southgate Street and follow the road until turning into Westgate Street passing the Theatre Royal on your left hand side. Turn right and keeping to the left merging into Crown Street, then turn left into Churchgate Street opposite the Norman Tower. Proceed along Churchgate Street one-way system, turn left into Whiting Street and No.32 is 75 metres along the street on the left hand side **marked by our TO LET board**.

From the town centre (on foot) leave the Market Square with Nutshell pub behind you, proceed down Whiting Street, crossing Churchgate Street towards Westgate Street and No.32 is 75 metres along the street on the left hand side.



Preserved period details throughout, including this red brick feature fireplace



Bury St. Edmunds

1 Churchgate Street
Bury St. Edmunds IP33 1RL
+44 (0) 1284 765 256
bury@wlea.co.uk

London (Chelsea)

Caxton Gate, 32 Caxton Rd
London W12 8AJ
+44 (0) 0207 221 8838
london@wlea.co.uk

www.whatley-lane.co.uk
www.rightmove.co.uk
www.countrylife.co.uk

Disclaimer 1. Whatley Lane Estate Agents (the "Agents") are not authorised to make or give any representations or warranties in relation to the property either here or elsewhere, either on their own behalf or on behalf of their client or otherwise. The Agents assume no responsibility for any statement that may be made in our offices. These particulars do not form part of any offer or contract and must not be relied upon as statements or representations of fact. 2. Any areas, measurements or distances are approximate. The text, images and plans are for guidance only and are not necessarily comprehensive. It should not be assumed that the property has all necessary planning, building regulation or other consents and the Agent have not tested any services, equipment or facilities. Purchasers must satisfy themselves by inspection or otherwise. 3. The Agents would urge any potential purchaser to contact our offices to establish availability of this property prior to commencing any journey of distance to view. Details designed and produced by Whatley Lane Marketing | Jun 2026.

Ecologi



Proudly in association with our London Office

F.W.GAPP
EST. 1919