



The Ridgway, Romiley. SK6 3EE

Offered with 'No Onward Chain' this well presented bungalow is 'ready to move into' and features: Entrance hall, living room, modern fitted dining kitchen leading to the conservatory, two double bedrooms (each with built in furniture) and modern shower room. Gas central heating is installed along with uPVC double glazing. This is a popular residential area with Romiley Village and Railway Station conveniently situated.

EPC rating: ; Council Tax Band: C. Tenure; Freehold.

Asking Price £275,000



LIVING ROOM

17' 3" x 10' 11" (5.25m x 3.32m)



BEDROOM TWO

12' 8" x 9' 8" (3.86m x 2.94m)



OUTSIDE



FITTED KITCHEN

12' 6" x 10' 10" (3.81m x 3.30m)



SHOWER ROOM

7' 0" x 6' 4" (2.13m x 1.93m)

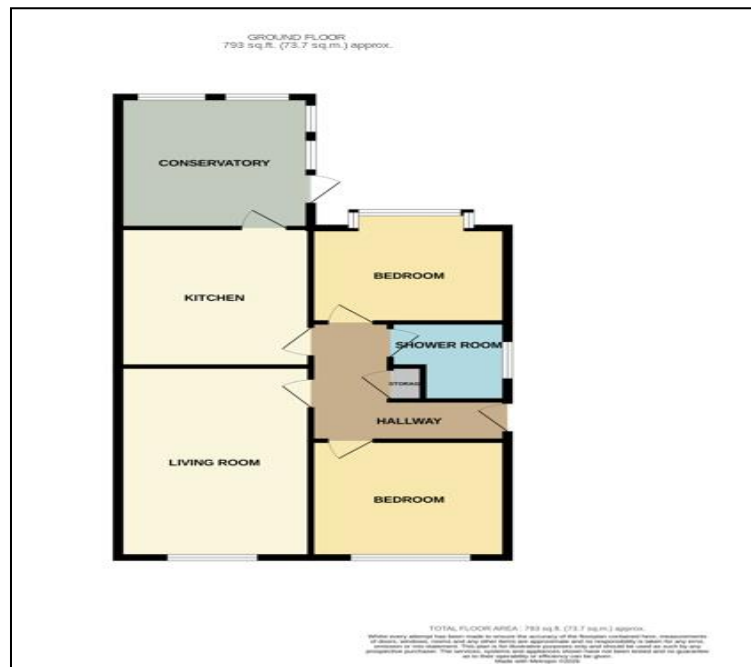


VIEWING ARRANGEMENTS

Appointment is strictly by appointment with Thomas Lardner Romiley Office - telephone number 0161 494 5136

BEDROOM ONE

11' 2" x 10' 7" (3.40m x 3.22m)



Thomas Lardner Estate Agents, which is a trading name of Stockport Residential Ltd, for themselves and for the vendors or lessors of this property whose agents they are give notice that: (1) all measurements are approximate and any plans provided are not to scale; (2) the particulars are set out as a general outline only for the guidance of intending purchasers or lessors, and do not constitute, nor constitute part of, an offer or contract; (3) we have not tested any apparatus, equipment, fixtures, fittings or services, and so cannot verify that they are in working order or fit for purpose; (4) solicitors should confirm moveable items described in these particulars are, in fact, included in the sale since circumstances change during marketing or negotiations.

T709 Printed by Ravensworth 01670 713330