

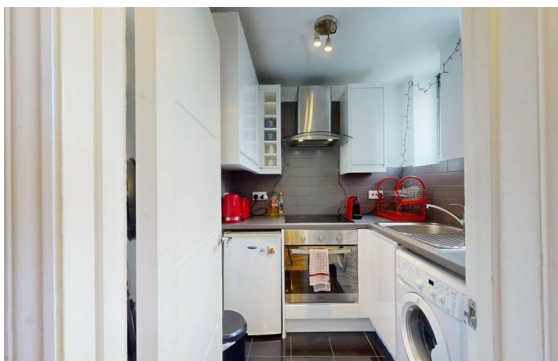


Gloucester Place, Marylebone, London, NW1

Rent £545 PCM

0 Bed | 1 Bath | 1 Reception

Please call us on 020 7724 2233 or email us info@newingtonstates.com to book a viewing.



A bright and well-laid-out studio apartment offering practical living space in a prime central London location. Positioned quietly at the rear of the building, the property features a spacious studio room with clearly defined living and sleeping areas, a separate kitchen with fitted appliances, and a modern bathroom with shower. The layout maximises space and natural light, creating a comfortable and functional home.

Ideally located just moments from Baker Street Station and within easy reach of Bond Street Station and Marylebone Station. Regent's Park is also nearby.

EPC Rating: D

Energy Efficiency Rating: D

Agents Note: Whilst every care has been taken to prepare these particulars, they are for guidance purposes only. All measurements are approximate and are for general guidance purposes only and whilst every care has been taken to ensure their accuracy, they should not be relied upon and potential buyers/tenants are advised to recheck the measurements.

NEWINGTON
— ESTATES —

60 Upper Montagu Street

London

W1H 1SN

020 7724 2233

info@newingtonstates.com

<http://www.newingtonstates.com>