

Spring Hill, Maidenhead, SL6 2QW

Guide Price £750,000

🛏 3 🚿 3 🛋 1



BRAND NEW DETACHED HOUSE !- THREE BEDROOM - THREE BATHROOM - PRIVATE GARDEN - PARKING X2 CARS - CHAIN FREE

Step into this charming and thoughtfully designed brand new home, where comfort and functionality meet modern living.

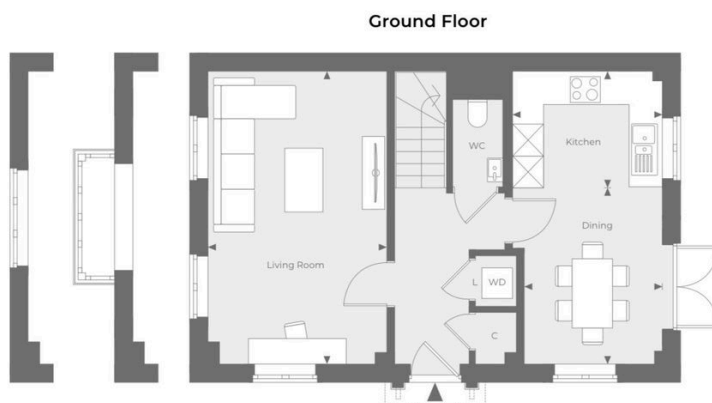
Starting from the ground floor which offers a bright and spacious open-plan layout, perfect for family life. Whether you're preparing dinner or tidying up, you can still stay connected to the conversation. French doors from the living area open directly onto the private garden, creating a seamless indoor - outdoor flow ideal for entertaining or enjoying the sunshine. A convenient WC and utility area complete the ground floor, providing practical space for the integrated washing machine and extra storage.

On the first floor, you'll find a generous double bedroom and a cosy single bedroom, both served by the modern family bathroom.

The top floor offers a peaceful retreat a spacious principal bedroom featuring a dressing area and a private en-suite shower room, creating the perfect sanctuary at the end of the day.

Spring Hill is set amidst green open spaces and surrounded by scenic landscapes, picturesque country walks, and historic villages. Right on your doorstep, you'll find everything you need: from shops and restaurants to excellent schools and nurseries in Maidenhead and around, and thanks to excellent transport links, the city and the countryside feel closer than ever.

- Brand New
- Three Bedroom
- W/C
- Freehold
- Private Garden
- Detached House
- Three Bathroom
- Parking for x2 Cars
- Chain Free
-



Side elevation for plots 10 & 11
Side elevation for plots 2, 5, 23 & 28

Porches may vary between plots, please speak to your sales advisor for more information.

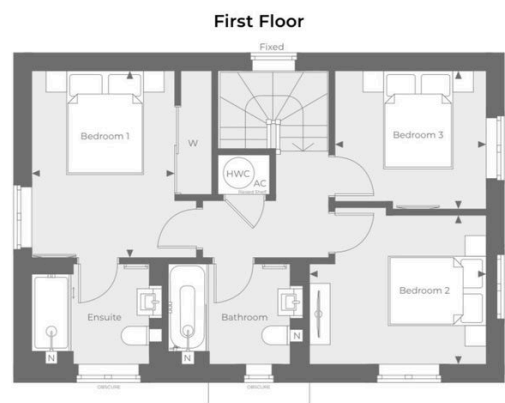
Total Area 101.38 sqm 1,091.25 sq ft

Ground Floor

Kitchen	2.92m x 2.27m	9'7" x 7'5"
Dining	3.43m x 2.69m	11'3" x 8'10"
Living Room	5.70m x 3.49m	18'8" x 11'5"

First Floor

Bedroom 1	3.63m x 2.79m	11'11" x 9'2"
Bedroom 2	3.44m x 3.05m	11'3" x 10'0"
Bedroom 3	2.95m x 2.68m	9'8" x 8'10"



Key

➔	Measurement Points	WD	Space for Washer Dryer
C	Cupboard	N	Niche
W	Wardrobe	L	Laundry Cupboard
AC	Airing Cupboard	HWC	Hot Water Cylinder

Floorplans shown for Spring Hill are for approximate measurements only. Exact layouts and sizes may vary. All measurements may vary within a tolerance of 5%. The dimensions are not intended to be used for carpet sizes, appliance sizes or items of furniture. Furniture layouts are indicative only.