



**ESTHER ANNE PLACE, N1**

**£3,600 per week ( pcm)**

Available 14th August - The ever popular luxury Islington Square development is located on the trendy, cosmopolitan and vibrant Upper Street. The unique architectural layout of this historical building creates individual floor plans rarely seen in more modern designs.||

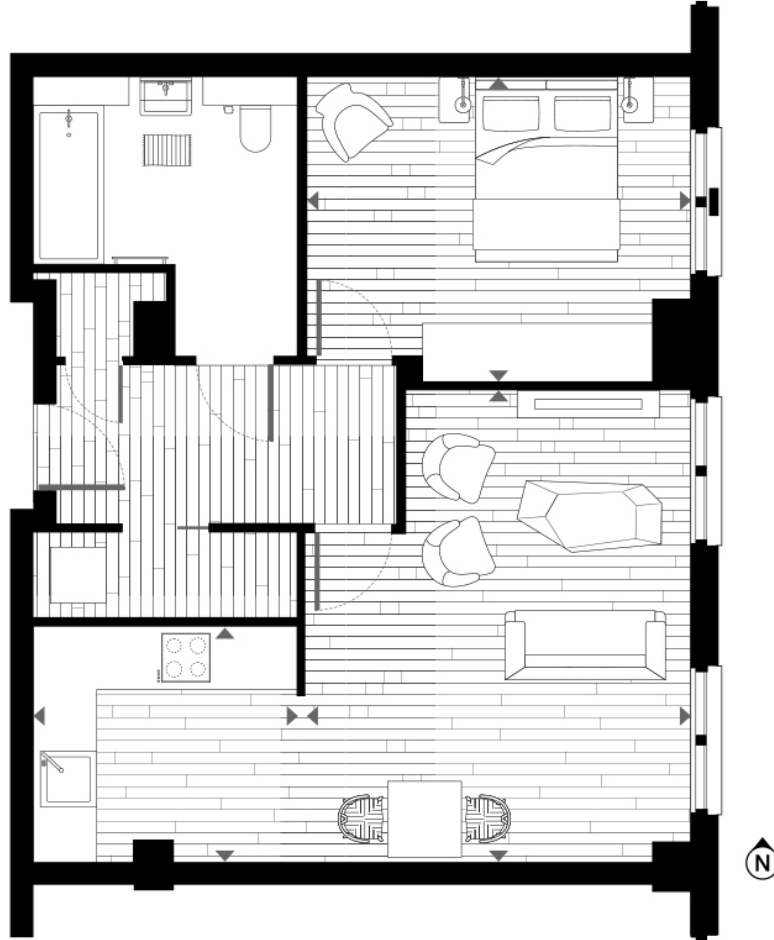


## ABOUT THE HOME

This one bedroom apartment located in Islington, often called the capital







	m	ft
Living / Dining	5.07 × 4.14	16.63 × 13.58
Kitchen	2.93 × 2.53	9.61 × 8.30
Bedroom	4.12 × 3.26	13.52 × 10.70
Total	58 sqm	624 sqft

**LiFE RESIDENTIAL**

71 Drayton Park, London, N5

1BF

Sales: 020 3838 8666

Lettings: 020 7359 4488

Energy Rating: C. We aim to make our particulars both accurate and reliable. However they are not guaranteed; nor do they form part of an offer or contract. If you require clarification on any points then please contact us, especially if you're traveling some distance to view. Please note that appliances and heating systems have not been tested and therefore no warranties can be given as to their good working order.