



Flat 2, Jersey Court Milk Churn Way, Woolmer Green

Knebworth

CHANDLERS

In Excess of £300,000

Flat 2

Jersey Court Milk Churn Way, Knebworth

A beautifully presented two-bedroom ground-floor apartment with allocated parking, constructed in 2021 and set within the highly desirable village of Woolmer Green. The property enjoys a convenient village location with local shops and public houses close by, while Welwyn Garden City and Stevenage are both just a short drive away, offering a comprehensive range of amenities.

Accessed via a secure door entry system, the accommodation comprises an entrance hall with doors to all rooms and a generous full-height storage cupboard. The heart of the home is the impressive open-plan sitting room, dining area and kitchen, creating a wonderful central space ideal for modern living. The fitted kitchen features a range of wall and base units and opens seamlessly into the living area, providing ample space for a dining table. This room further benefits from access to an enclosed balcony, offering a lovely spot for outdoor dining or simply relaxing.

The principal bedroom includes a fitted wardrobe and an en-suite shower room, while the second bedroom also benefits from a fitted wardrobe. A modern bathroom with a window completes the accommodation. (EPC B, Welwyn & Hatfield Council, Tax Band D)

Leasehold - 125 year lease commencing 01/01/2019, Service Charge £1400 PA (Current Year), £0 Ground Rent.

Council Tax band: D

Tenure: Leasehold

EPC Energy Efficiency Rating: B

EPC Environmental Impact Rating: A





Flat 2

Jersey Court Milk Churn Way, Knebworth

- Two bedroom ground floor apartment
- Allocated Parking space
- Desirable village location
- Modern purpose built
- Entrance hall with large cupboard
- Open plan kitchen / dining / sitting room
- Main bedroom with ensuite shower and wardrobe
- Second bedroom with wardrobe
- Family bathroom with window
- 118 Year Lease



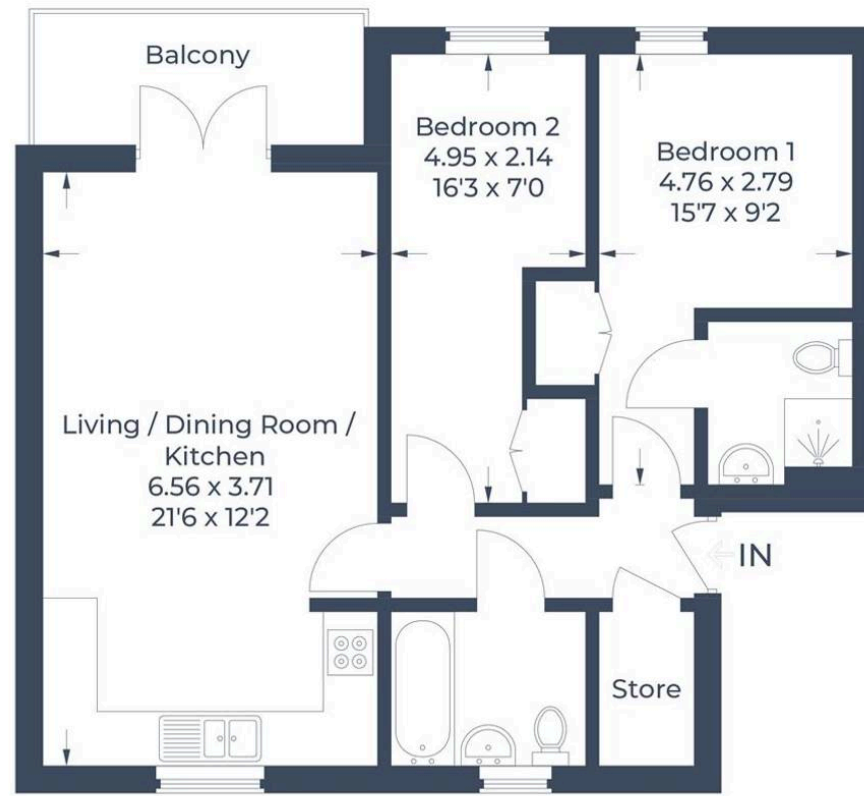








Approximate Gross Internal Area = 60.2 sq m / 648 sq ft



Ground Floor

Illustration for identification purposes only,
measurements are approximate, not to scale.
© CJ Property Marketing

Chandlers Estate Agents

Chandlers, 18 Market Place – SG1 1DB

01438356635

sales@chandlers-estates.co.uk

www.chandlers-estates.co.uk/

While we believe the details provided to be correct, we do not guarantee their accuracy. Prospective buyers should verify all information independently before making any decisions. No responsibility is taken for any errors, omissions, or misstatements.