



Petersfield Road, W3

£575,000

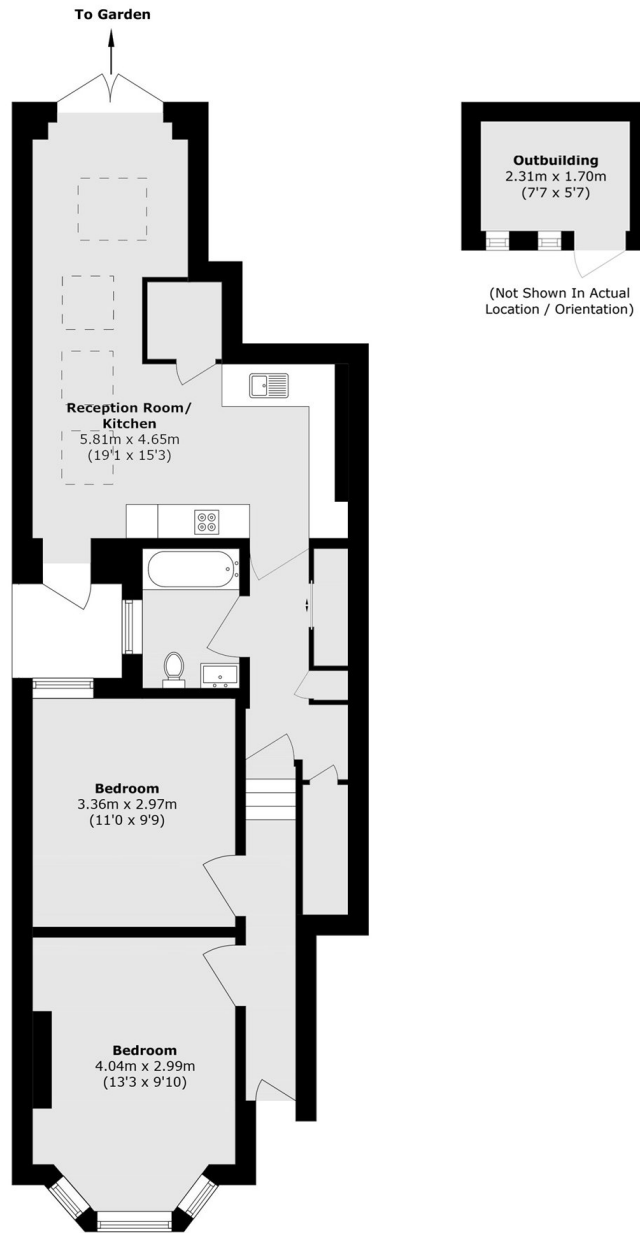
A ground floor maisonette which combines period charm with modern design and features two double bedrooms a bright sleek eat-in kitchen with double doors leading to a private South facing garden. With a private entrance and a share of the freehold, this home is perfect for small families, couples and young professionals alike.

Situated on the borders of Chiswick, the property benefits from superb transport links via Acton Town and Turnham Green Underground stations, as well as Acton Central Overground and Acton Mainline (Elizabeth Line) Families will appreciate its location, within the catchment area for Ark Primary School (rated Outstanding by Ofsted).

Features

- Maisonette
- Two Bedrooms
- Private Garden
- Share of Freehold
- Own Entrance
- No Onward Chain

Petersfield Road, London, W3



Total area (approx.): 57.8 sq. m (622.1 sq. ft)

Outbuilding area (approx.): 3.9 sq. m (42.2 sq. ft)