



Poppy Way, Havant PO9 2FX

welcome to

Poppy Way, Havant

Well-presented four bed detached in sought-after Denvilles, featuring open-plan kitchen/dining, sun room, utility, en-suite master, private west facing garden, driveway and garage, close to schools, amenities and transport links.

Entrance Hall

Stairs leading to first floor with under stair storage.
Doors to:

Cloakroom

Double glazed window to side aspect. Low level WC, corner wash hand basin. Storage cupboard for coats.

Lounge

Double glazed bay window to front aspect. Carpet flooring, two radiators.

Kitchen/Breakfast Room

Double glazed French doors leading to sun room. Double glazed window to rear garden. Range of wall and base units with work surface over incorporating inset sink unit with mixer tap over. Built-in fridge/freezer, dishwasher, double oven and gas hob with extractor hood over. Vinyl flooring, spotlights, two radiators, door to utility room. Ample space for table and chairs.

Utility Room

Part glazed door to side aspect. Wall mounted boiler, space for washing machine and tumble dryer, radiator. Cupboard units.

Sun Room

Double glazed to side and rear aspects. Carpet flooring, glazed roofing.

First Floor Landing

Airing cupboard. Doors to:

Bedroom One

Double glazed windows to front and side aspects. Carpet flooring, radiator. Built-in wardrobes, door to en-suite.

En-Suite

Double glazed window to side aspect. Shower cubicle with sliding door, low level WC, pedestal wash hand basin. Tiled floor, heated towel rail.

Bedroom Two

Double glazed window to rear aspect. Carpet flooring, radiator. Built-in wardrobe.

Bedroom Three

Double glazed window to rear aspect. Carpet flooring, radiator.

Bedroom Four

Double glazed window to front aspect. Carpet flooring, radiator. Currently being used as an office.

Bathroom

Double glazed window to side aspect. Panel enclosed bath with shower over, low level WC, wash hand basin. Heated towel rail, walls tiled to principal areas.

Outside

Front

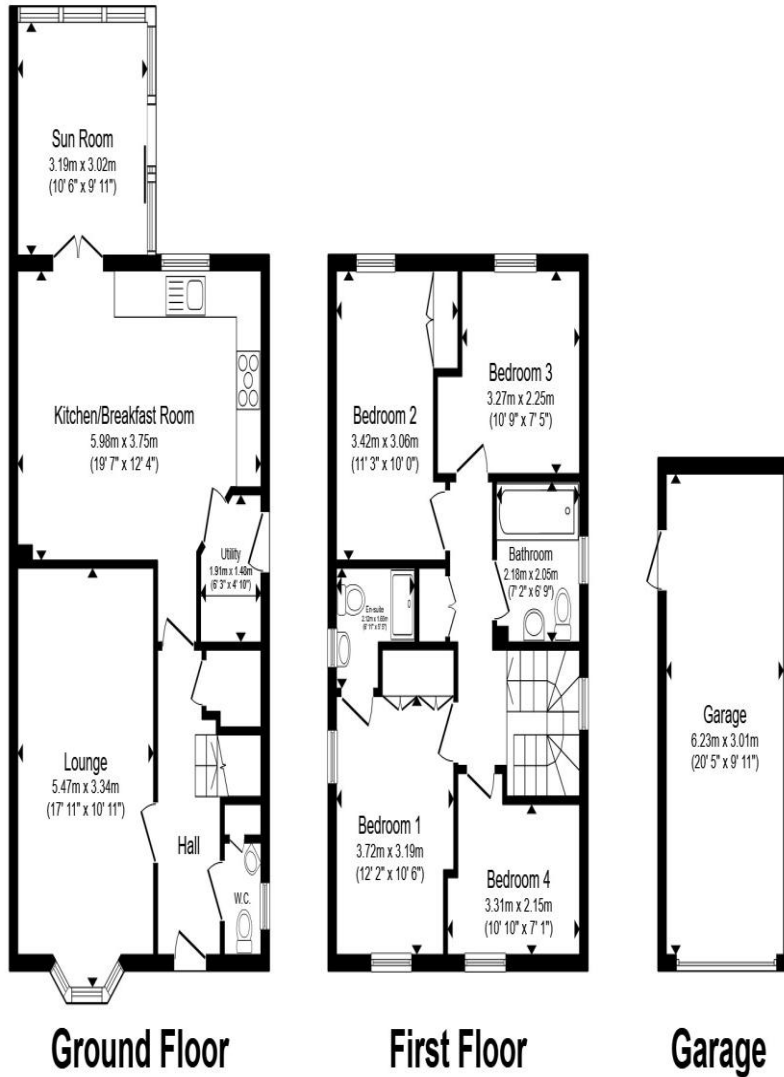
Tarmac and slabbed front, edged with hedging and flower beds. Driveway, leading to garage, providing off road parking. Personal door to rear garden.

Garage

Up and over door, power and light.

Rear Garden

Laid to patio and lawn, enclosed by panel fencing and mature shrub borders. Outside tap. Personal door to garage.



Total floor area 134.7 m² (1,450 sq.ft.) approx

This floor plan is for illustrative purposes only. It is not drawn to scale. Any measurements, floor areas (including any total floor area), openings and orientation are approximate. No details are guaranteed, they cannot be relied upon for any purpose and they do not form part of any agreement. No liability is taken for any error, omission or misstatement. A party must rely upon its own inspection(s). Powered by www.propertybox.io



welcome to
Poppy Way,
Havant

- Four Bedroom Detached House
- Denvilles Location
- En-Suite to Master Bed
- Open-Plan Kitchen/Diner
- Sun Room

Tenure: Freehold EPC Rating: C
Council Tax Band: E

offers over
£475,000



view this property online fox-and-sons.co.uk/Property/WLV109792



Property Ref:
WLV109792 - 0005

1. MONEY LAUNDERING REGULATIONS Intending purchasers will be asked to produce identification documentation at a later stage and we would ask for your co-operation in order that there is no delay in agreeing the sale. 2. These particulars do not constitute part or all of an offer or contract. 3. The measurements indicated are supplied for guidance only and as such must be considered incorrect. Potential buyers are advised to recheck measurements before committing to any expense. 4. We have not tested any apparatus, equipment, fixtures or services and it is in the buyers interest to check the working condition of any appliances. 5. Where an EPC, or a Home Report (Scotland only) is held for this property, it is available for inspection at the branch by appointment. If you require a printed version of a Home Report, you will need to pay a reasonable production charge reflecting printing and other costs. 6. We are not able to offer an opinion either written or verbal on the content of these reports and this must be obtained from your legal representative. 7. Whilst we take care in preparing these reports, a buyer should ensure that his/her legal representative confirms as soon as possible all matters relating to title including the extent and boundaries of the property and other important matters before exchange of contracts.

Fox & Sons is a trading name of Sequence (UK) Limited which is registered in England and Wales under company number 4268443, Registered Office is Cumbria House, 16-20 Hockliffe Street, Leighton Buzzard, Bedfordshire, LU7 1GN. VAT Registration Number is 500 2481 05.


fox & sons



023 9226 2447



Waterlooville@fox-and-sons.co.uk



81B London Road, WATERLOOVILLE,
Hampshire, PO7 7ES



fox-and-sons.co.uk