



19 Drayton Road  
Reading, RG30 2PH

Guide price £450,000 Freehold



#### DESCRIPTION

VP - NO ONWARD CHAIN. Presented to the market is this charming three bedroom semi-detached house with excellent access to amenities, train stations, bus routes, local schools and parks.

Upon entering, you are greeted by a welcoming entrance hallway that leads to two spacious reception rooms, perfect for both entertaining guests and enjoying quiet family evenings. The dining room offers a delightful space for meals, while the living room provides a comfortable area to relax, overlooking the garden. The well-appointed kitchen is conveniently located, making meal preparation a breeze.

The first floor boasts three generously sized bedrooms, each offering ample natural light and space for personalisation. A refitted bathroom suite completes this level, ensuring modern comfort for all residents.

Outside, the stunning landscaped rear garden is a true highlight, providing a serene retreat for outdoor gatherings or simply unwinding in nature. Additionally, the property features access to a garage and a modern outbuilding that can serve as an office, lounge, or bar, catering to a variety of lifestyle needs.

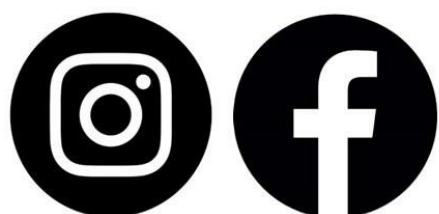
Parking is a significant advantage here, with space for up to two/three vehicles, ensuring convenience for you and your guests.

Council tax band - C

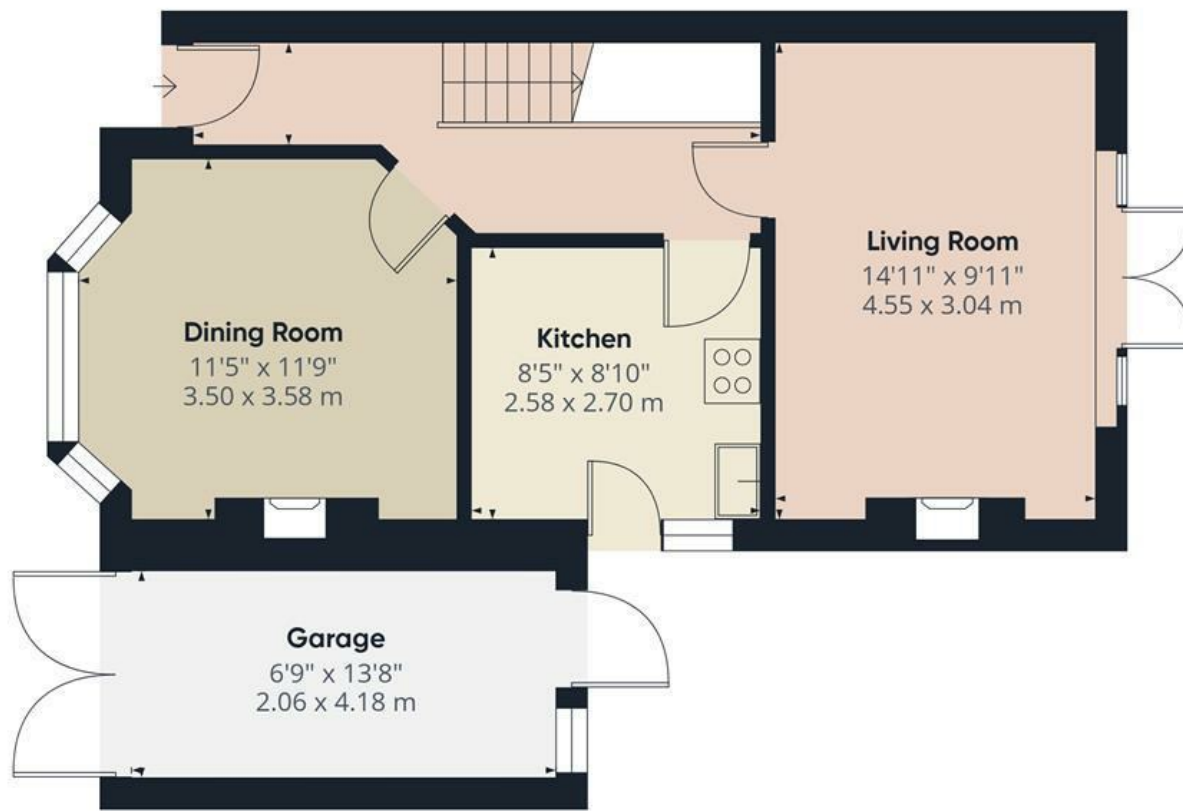
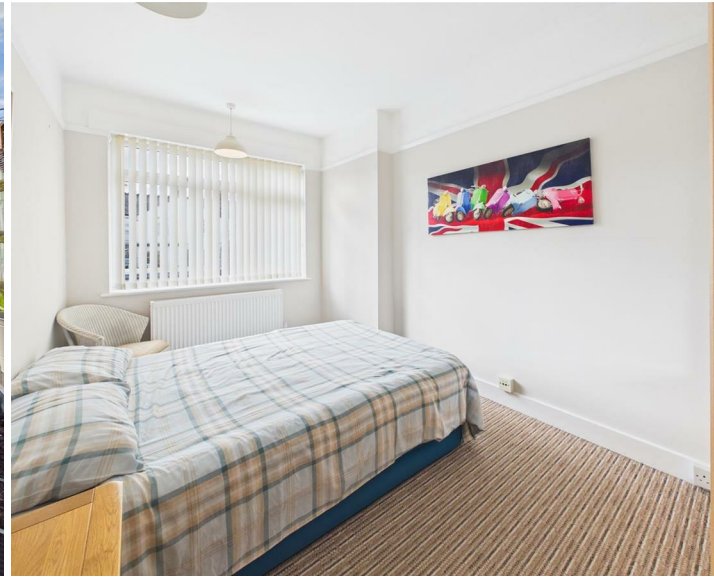
#### SUMMARY OF ACCOMMODATION

- NO ONWARD CHAIN
- SEMI DETACHED HOUSE
- THREE BEDROOMS
- OFF ROAD PARKING & GARAGE
- OUTBUILDING/BAR/LOUNGE
- TWO RECEPTION ROOMS
- LANDSCAPED REAR GARDEN

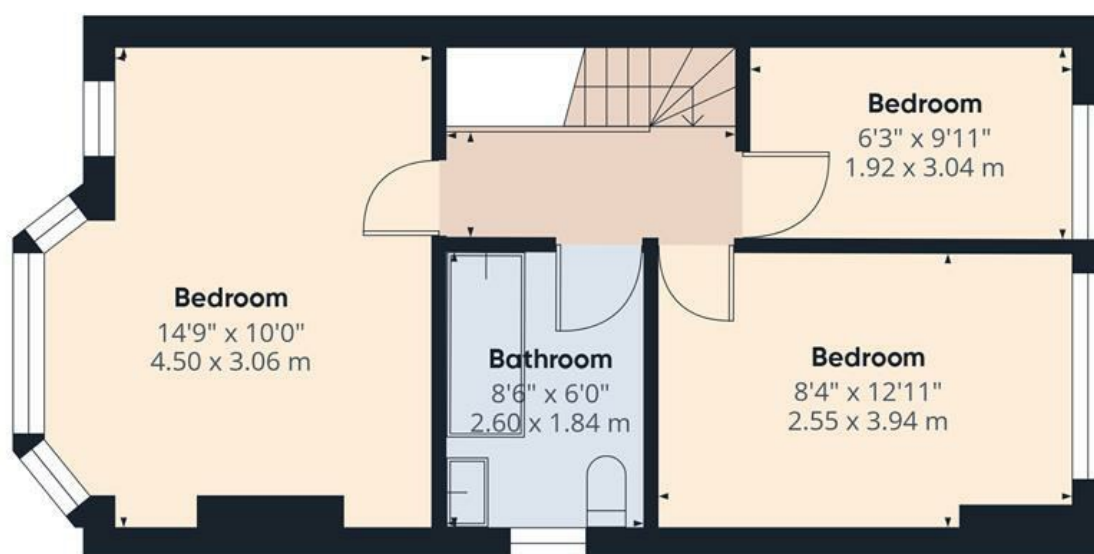
Get Social



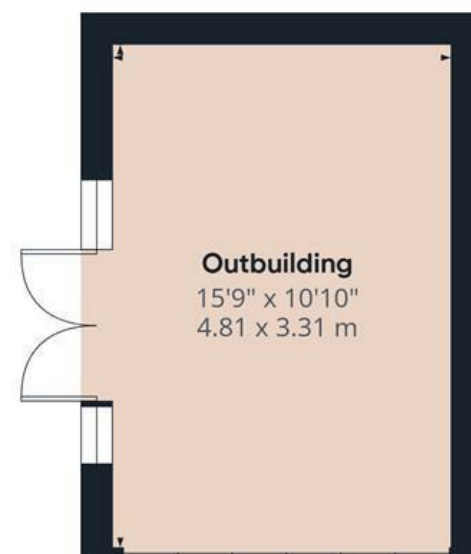
VillageProperties.co.uk



Ground Floor Building 1



Floor 1 Building 1



Ground Floor Building 2



**Approximate total area<sup>™</sup>**  
 1124 ft<sup>2</sup>  
 104.3 m<sup>2</sup>

(1) Excluding balconies and terraces

Calculations reference the RICS IPMS 3C standard. Measurements are approximate and not to scale. This floor plan is intended for illustration only.

GIRAFFE360