

SNELLERS

ESTATE AGENTS



Holmesdale Road, TW11

£450,000

Set within the stunning 32-acre Langdon Park development, this second-floor two bedroom flat offers a calm, green setting with all the modern perks. An allocated parking space, visitor parking, and even access to a private residents' gym, it's got everything you need for easy, everyday living.



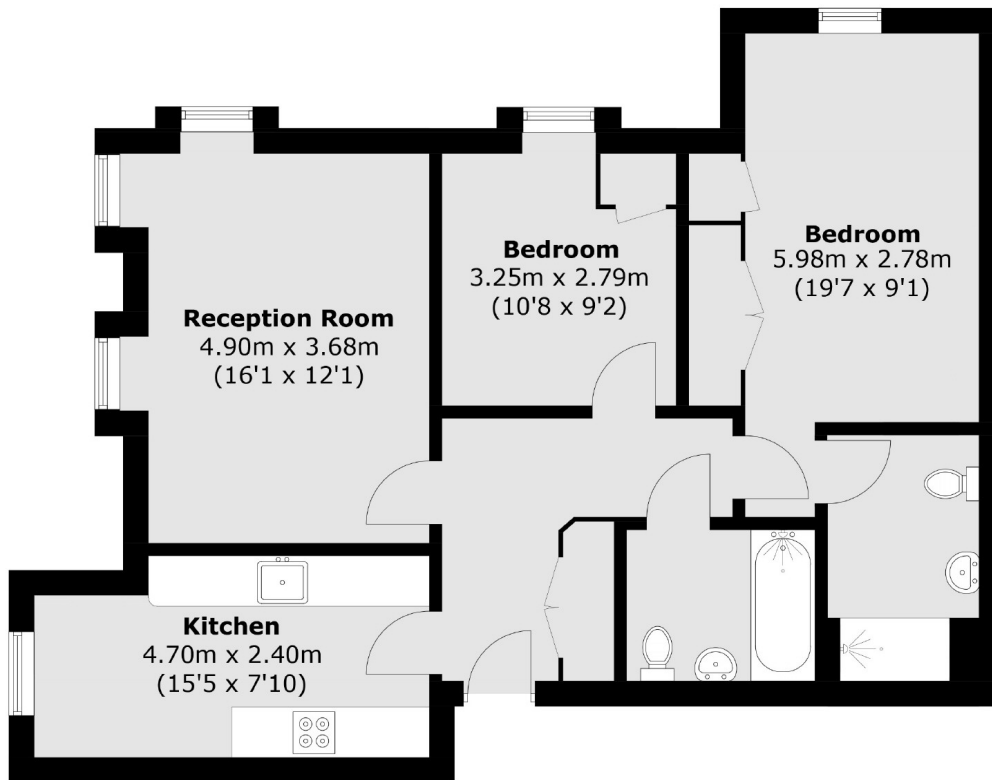
When it comes to location, you're in a great spot. Transport links are close by, making commuting easy, and there are shops, cafés and everything else you need just a short trip away. It's the kind of place that just makes life feel simple.

- Large Reception Room • Two Bedrooms • Two Bathroom •
- Top Floor • Residents Parking • Stunning Communal Grounds •



SNELLERS

ESTATE AGENTS



Total area (approx.): 72.8 sq. m (783.6 sq. ft)

Snellers Teddington Sales
74 Broad Street
Teddington
TW11 8QX
020 8408 8040
teddingtonsales@snellers.co.uk

Energy Rating: C We aim to make our particulars both accurate and reliable. However they are not guaranteed; nor do they form part of an offer or contract. If you require clarification on any points then please contact us, especially if you're traveling some distance to view. Please note that appliances and heating systems have not been tested and therefore no warranties can be given as to their good working order