



OVER 60?

Secure this property
for up to **59% less!**

Guide Price

£700,000

Freehold

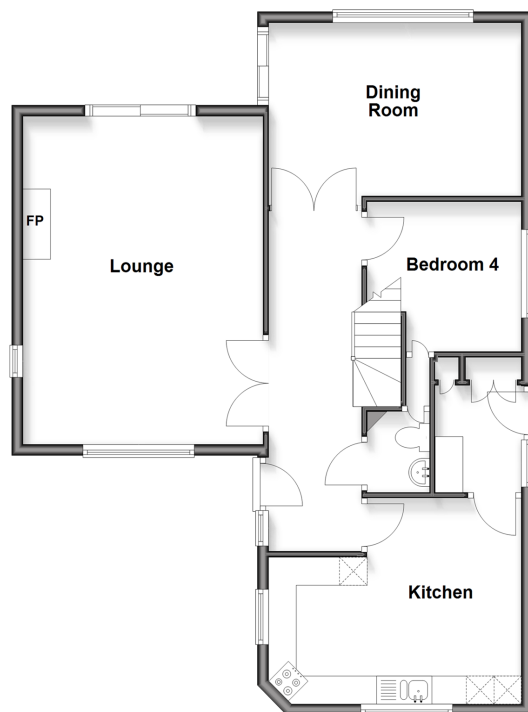
4x  2x  2x 

**Meadow Lane,
Culverstone, Meopham,
Kent, DA13**

Wards
Helping you move forwards

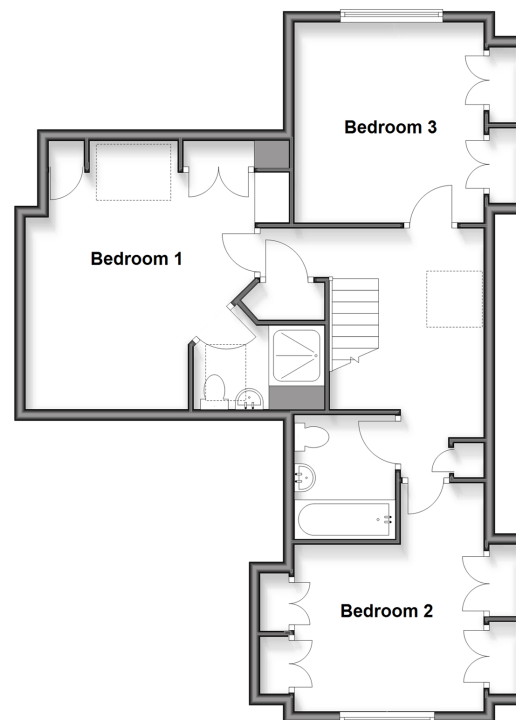
Ground Floor

Approx. 81.4 sq. metres (876.6 sq. feet)



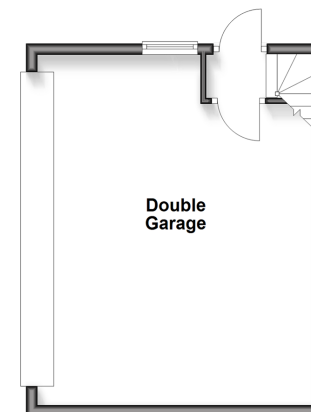
First Floor

Approx. 69.4 sq. metres (746.9 sq. feet)



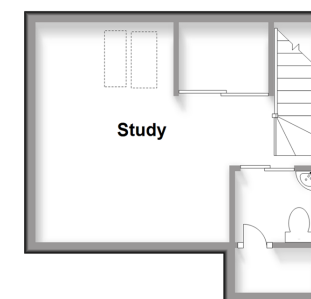
Outbuilding

Approx. 31.5 sq. metres (338.9 sq. feet)



Outbuilding

Approx. 21.1 sq. metres (226.6 sq. feet)



Accommodation

GROUND FLOOR

Hallway

Cloakroom: 4'10 x 4'0 (1.47m x 1.22m)

Lounge: 19'1 x 14'1 (5.82m x 4.30m)

Dining Room: 14'11 x 10'8 (4.55m x 3.25m)

Kitchen: (L-shaped) 15'8 x 8'8 (4.78m x 2.64m)
plus 9'2 x 3'4 (2.80m x 1.02m)

Utility Room: 5'5 x 4'10 (1.65m x 1.47m)

Bedroom 4: 9'2 x 8'8 (2.80m x 2.64m)

FIRST FLOOR

Landing

Bedroom 1: 15'9 x 14'3 (4.80m x 4.35m)

Ensuite Shower Room: 7'4 x 4'9 (2.24m x 1.45m)

Bedroom 2: (L-shaped) 11'8 x 9'10 (3.56m x 3.00m)
plus 5'0 x 3'7 (1.53m x 1.09m)

Bedroom 3: 11'8 x 11'6 (3.56m x 3.51m)

Bathroom: 7'2 x 6'3 (2.19m x 1.91m)

OUTBUILDINGS

Double Garage: 19'0 x 16'7 (5.80m x 5.06m)

Study: 12'9 x 9'9 (3.89m x 2.97m)

Cloakroom: 6'0 x 5'10 (1.83m x 1.78m)

OUTSIDE

Driveway

Front Garden

Rear Garden



Main features

- Double garage with versatile office space above
- Great internal condition throughout with cosy log burner in lounge
- Beautiful, tiered garden perfect for hosting family and guests
- Bedrooms both upstairs and downstairs, offering plenty of space and flexibility
- Short drive to Meopham train station and local amenities



Nearest Schools

Primary Schools: Vigo Village School 0.4 miles, Culverstone Green Primary 0.4 miles, Trottiscliffe C of E Primary 1.2 miles
Secondary Schools: Meopham School 2.2 miles, Helen Allison School 2.7 miles, Wrotham School 3.1 miles,



Transport Information

Train Stations: Sole Street 3.4 miles, Meopham 3.4 miles, Borough Green & Wrotham 3.6 miles



Address

Meadow Lane, Culverstone, Meopham, Kent, DA13



Directions

For directions to this property please contact us.



Wards
Helping you move forwards

Call Meopham Branch 01474 813100 ■ wardsofkent.co.uk



- Legal advice should be taken to verify fixtures/fittings, planning, alterations and/or lease details
- Through a Homewise Home For Life Plan people aged 60+ can secure this property for up to 59% less, by purchasing a Lifetime Lease
- Appliances & services are untested, dimensions are approximate and floor plans are not to scale



13326225/20260107/JJ/HF