



58, Morris Grove, Rose Place, Bicton Heath, Shrewsbury, SY3 5FP
£1,250 Per Month



58, Morris Grove, Rose Place, Bicton Heath, Shrewsbury, SY3 5FP

£1,250 Per Month

VIRTUAL TOUR AVAILABLE: Superb recently built three double bedroom semi-detached house located in a new development off Welshpool Road, a short distance to the west of Shrewsbury town centre. Benefitting from excellent school catchments, access to the ring road and close to Royal Shrewsbury Hospital.

Available: 21/07/26

Description

Comprising: Entrance lobby, downstairs WC, living room, kitchen including integrated appliances, dining area with double doors to rear. Stairs to first floor landing including airing cupboard, master bedroom including fitted wardrobes and ensuite shower room, double bedroom including fitted wardrobes, single bedroom, family bathroom including shower. Gas central heating, double glazing, attractive rear garden including patio and shed. Driveway parking for two cars. EPC B



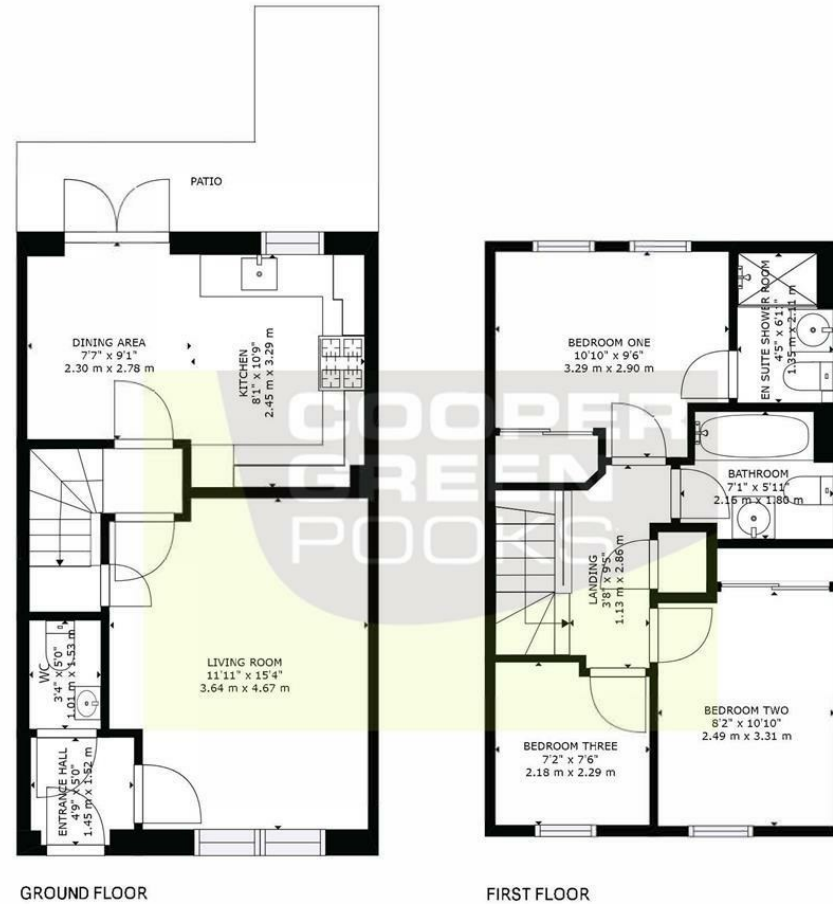
Unfurnished

Council Tax Band: C

Available: 27th July 2026

EPC: B

Floor Plans



GROSS INTERNAL AREA
GROUND FLOOR: 421 sq. ft, 39 m², FIRST FLOOR: 414 sq. ft, 38 m²
EXCLUDED AREAS: , PATIO: 106 sq. ft, 10 m²
TOTAL: 836 sq. ft, 78 m²
SIZES AND DIMENSIONS ARE APPROXIMATE, ACTUAL MAY VARY.

These particulars, whilst believed to be accurate are set out as a general outline only for guidance and do not constitute any part of an offer or contract. Intending purchasers should not rely on them as statements of representation of fact, but must satisfy themselves by inspection or otherwise as to their accuracy. No person in this firm's employment has the authority to make or give any representation or warranty in respect of the property.