



www.knights.uk.com

CARDIFF

VALE

CAERPHILLY

BRISTOL

Holton Road



Comments by Jon Hooper-Nash

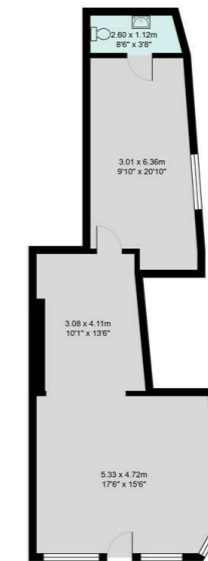


Property Specialist
Jon Hooper-Nash
 Director

jon@jeffreycross.co.uk



Holton Road, Barry



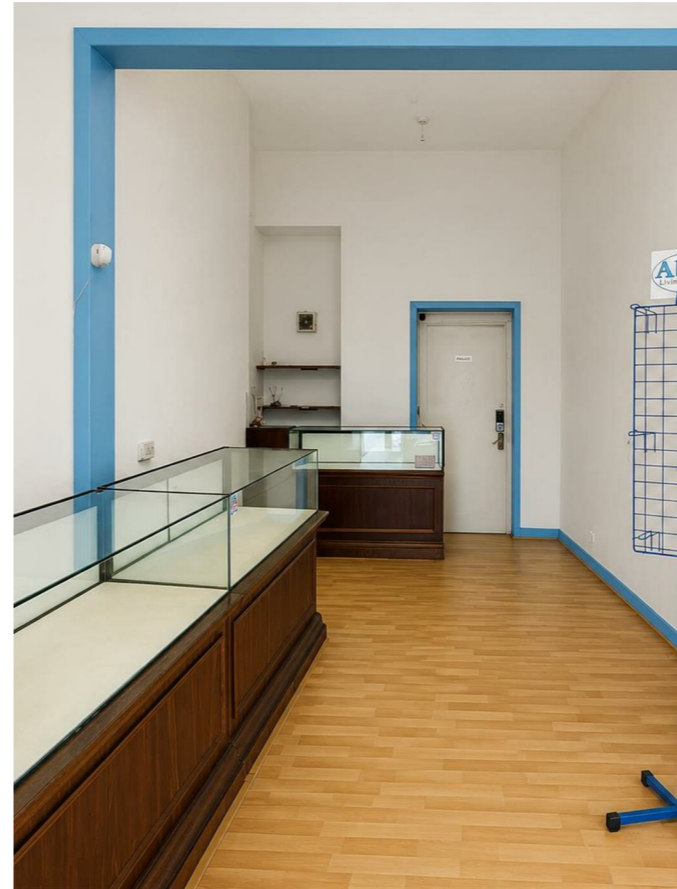
Total Area: 59.9 m² ... 644 ft²
 All measurements are approximate and for display purposes only.

Comments by the Homeowner





Energy Efficiency Rating		
	Current	Potential
Very energy efficient - lower running costs		
(92 plus) A		
(81-91) B		
(69-80) C		
(55-68) D		
(39-54) E		
(21-38) F		
(1-20) G		
Not energy efficient - higher running costs		
England & Wales	EU Directive 2002/91/EC	



Holton Road

, Barry, CF63 4HW

PCM

£540 PCM



0 Bedroom(s)



0 Bathroom(s)



0.00 sq ft



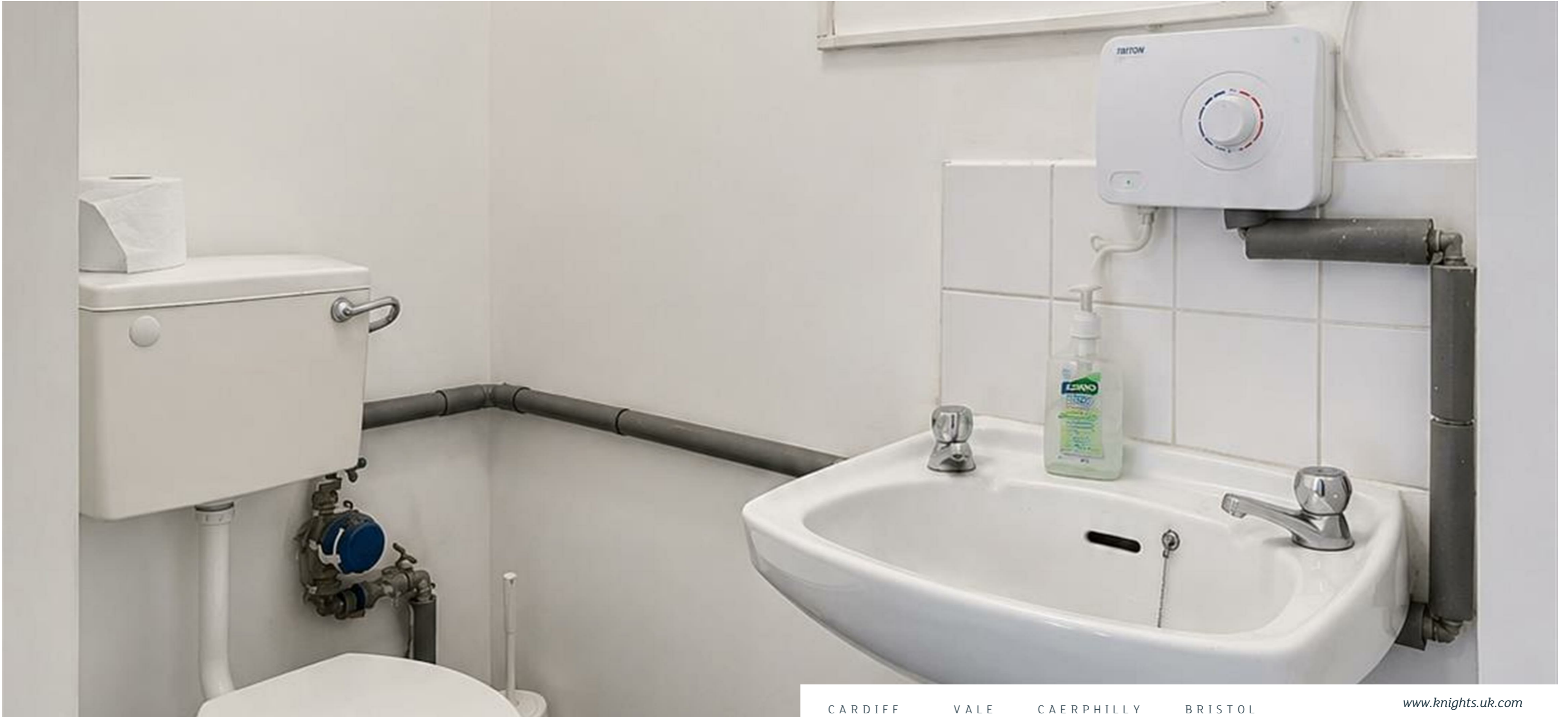
Contact our
Knights Barry Branch

01446 700222

Knights are pleased to offer a ground-floor commercial unit at the residential end of Holton Road. Offering shop frontage with roller shutter and circa 650 square foot of floor space, it is an excellent opportunity in the heart of Barry.

For more information, please call Jon in our Barry Office on 01446 700222.





CARDIFF

VALE

CAERPHILLY

BRISTOL

www.knights.uk.com