



Fintonagh Drive, Penenden Heath, Maidstone, , ME14 2AQ

Price £595,000



**** A BEAUTIFULLY PRESENTED REFURBISHED FOUR BEDROOM DETACHED FAMILY HOME SITUATED IN A MUCH SOUGHT AFTER CUL-DE-SAC SETTING IN PENENDEN HEATH ****

Page & Wells are proud to bring to the market this refurbished family home, meticulously improved in every way imaginable. The ground floor accommodation features an entrance hall, cloakroom, study, kitchen/dining room, utility room and spacious sitting room opening on to the rear garden. The first floor features four bedrooms and a large family bathroom. The property has recently benefited from a newly installed kitchen with fitted appliances including a self-cleaning double oven, new flooring, redecoration throughout, and a large newly fitted bathroom. Externally, there is a driveway providing off-road parking, integral garage and a low maintenance rear garden providing an excellent entertaining space. The property is well-placed for all local amenities. An internal viewing is highly recommended. Contact PAGE & WELLS King Street Office on 01622 756703. Tenure: Freehold. EPC Rating: C. Council Tax Band: F.



KEY FEATURES

- Recently refurbished throughout
- Newly fitted kitchen and bathroom
- New flooring
- Recently decorated
- Driveway and garage
- No chain

ACCOMMODATION

Ground Floor:

Entrance Hall

Cloakroom

Sitting Room

Kitchen/Dining Room

Study

Utility Room

First Floor:

Landing

Bedroom One

Bedroom Two

Bedroom Three

Bedroom Four


Large recently installed Family Bathroom

EXTERNALLY

There is a driveway providing off-road parking leading to an INTEGRAL GARAGE. There is a pleasant low maintenance rear garden providing an ideal entertaining space.

VIEWING

Viewing strictly by arrangements with the Agent's Head Office: 52-54 King Street, Maidstone, Kent ME14 1DB. Tel: 01622 756703.

Energy Efficiency Rating		
	Current	Potential
<i>Very energy efficient - lower running costs</i>		
(92 plus) A		
(81-91) B		83
(69-80) C	73	
(55-68) D		
(39-54) E		
(21-38) F		
(1-20) G		
<i>Not energy efficient - higher running costs</i>		
England & Wales	EU Directive 2002/91/EC	

Page & Wells limited for themselves and for the vendors of this property whose agents they are give notice that: 1. These particulars do not constitute any part of, an offer or a contract. 2. All statements contained in these particulars as to this property are made without responsibility on the part of Page & Wells Limited or the Vendor. 3. None of the statements contained in these particulars as to the property is to be relied on as statements or representations of fact. 4. Any intending purchaser must satisfy himself by inspection or otherwise as to the correctness of each of the statements contained in these particulars. 5. The vendor does not make or give, and neither Page & Wells Limited nor any person in their employment has any authority to make or give any representation whatsoever in relation to this property. These particulars are supplied on the understanding that all negotiations are carried out throughout Page & Wells Limited. Properties with a reference prefixes EAA are those which Page & Wells Limited disclose an interest in accordance with the provisions of the Estates Agents Act 1979

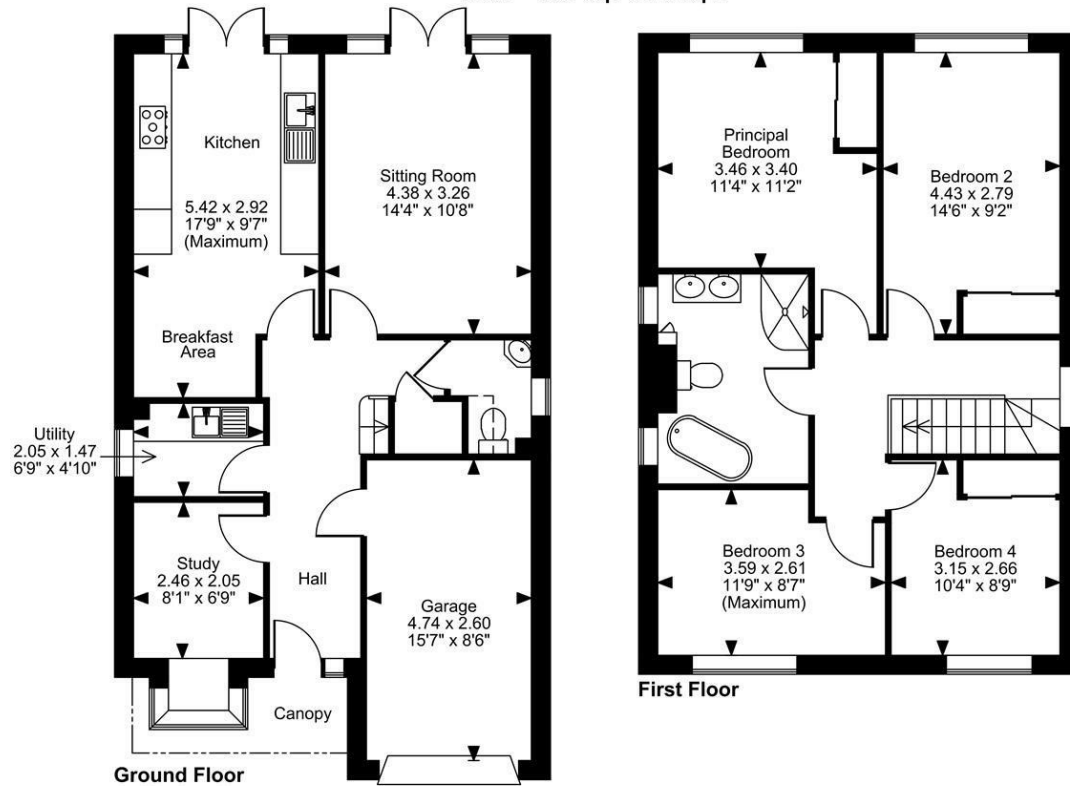
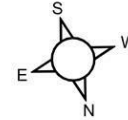
Elizabeth House, Fintonagh Drive, Penenden Heath, Maidstone

Approximate Gross Internal Area

Main House = 1198 Sq Ft/111 Sq M

Garage = 133 Sq Ft/12 Sq M

Total = 1331 Sq Ft/123 Sq M



FOR ILLUSTRATIVE PURPOSES ONLY - NOT TO SCALE

The position & size of doors, windows, appliances and other features are approximate only.

© ehouse. Unauthorised reproduction prohibited. Drawing ref. dig/8686862/SAP

