



Sunset Gardens, Wisbech
OIEO £300,000 Freehold

**Sharman
Quinney**

Key Features



- No Onward Chain
- Fantastic Family Home
- Sought After Location
- Generous Garden to Rear
- Ample Off-Road Parking and Double Garage

Ground Floor

Entrance Hall -

Composite door to front. Hard flooring, access into Dining Room, Lounge, Kitchen and Downstairs WC. Stairs to first floor.

Downstairs WC -

Window to front, two-piece suite comprising of low-rise WC and wall mounted hand wash basin and heated towel rail.

Dining Room -

Dual aspect window to front, fitted carpet. Access via double doors from the entrance hall.

Lounge -

Dual aspect window to front, patio doors to rear into conservatory. Fitted carpet and feature gas



fireplace.

Conservatory -

Accessed via lounge, panoramic views of the garden and double doors leading out onto the patio. Tiled flooring.

Kitchen -

Window to rear. Tiled flooring. A range of base and wall units including breakfast bar with worktop space over and tiled splash back. Gas/electric range oven with overhead extractor fan, integrated fridge, stainless steel sink. Access into the utility room.

Utility room -

Door into garden and tiled flooring. Matching units to kitchen and flooring continued. Plumbing for washing machine and cupboard housing boiler.

First Floor

Bedroom One -

Window to rear and fitted carpet. Access into private ensuite shower room.

Ensuite -

Window to rear. Three piece suite comprising of shower cubicle, wall mounted hand wash basin, low rise WC and heated towel rail.

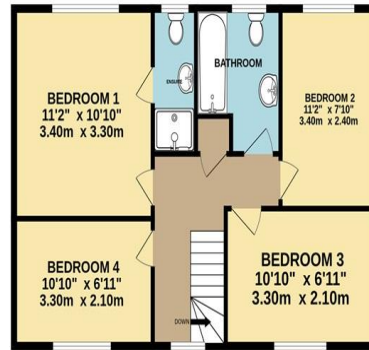
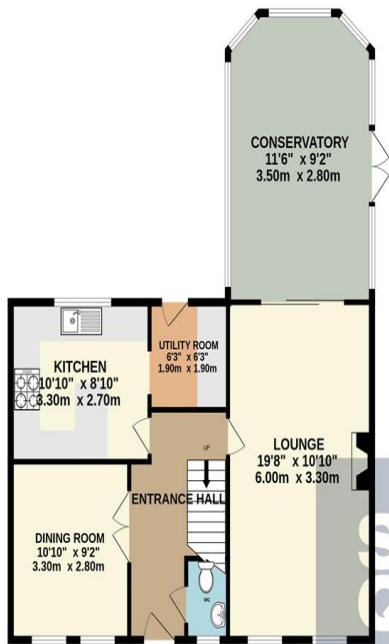
Bedroom Two -

Window to rear and fitted carpet.

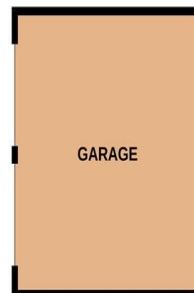


GROUND FLOOR

1ST FLOOR



Sharman
Quinney



Bedroom Three -
Window to front and fitted carpet.

Bedroom Four -
Window to front and fitted carpet.

Bathroom -
Window to rear. Three-piece suite comprising of
panelled bath, pedestal hand wash basin and
low-rise WC, heated towel rail.

Outside -
The property is accessed at the end of a private
road. The front of the property is accessed via
the paved driveway leading to the double garage,
providing ample off-road parking. There is a
section land to lawn and landscaped with various
trees and shrubs. A side gate allows access into
the rear garden.

The rear garden is mostly laid to lawn and
landscaped with a variety of trees and shrubs.
There are two timber sheds, a security light and
a cold-water tap.

To view this property call Sharman Quinney on:
01354 661166

Selling your property?

Contact us to arrange a **FREE** home valuation.

 01354 661166

 8 Broad Street, MARCH, Cambridgeshire, PE15 8TG

 march@sharmanquinney.co.uk

 www.sharmanquinney.co.uk



 SCAN ME



Sharman Quinney Holdings Limited is registered in England and Wales under company number 4174227, Registered Office is Cumbria House, 16-20 Hockliffe Street, Leighton Buzzard, Bedfordshire, LU7 1GN. VAT Registration Number is 500 2481 05.

1: These particulars do not constitute part or all of an offer or contract. 2: The measurements indicated are supplied for guidance only and as such must be considered incorrect. 3: Potential buyers are advised to recheck the measurements before committing to any expense. 4: Sharman Quinney has not tested any apparatus, equipment, fixtures, fittings or services and it is the buyers interests to check the working condition of any appliances. 5: Sharman Quinney has not sought to verify the legal title of the property and buyers must obtain verification from their legal representative. 6: Intending purchasers will be asked to produce identification documentation at a later stage and we would ask your co-operation in order that there will be no delay in agreeing the sale. Ref: MRC207127 - 0001

