



Dorrington Way, Ellesmere Port

£1,195 Per Month

Welcome to homes at Cromwell Road. Located in Ellesmere Port, Cromwell Road is an impressive new development of 98 desirable family homes, 6 miles from Chester town centre. Cromwell Road offers a wide range of amenities and transport links, making it the perfect location for families and couples.

The beautifully designed Weaver makes a wonderful family home or a spacious haven for couples. The front door leads you straight into the hallway with a WC to one side. Further on is the contemporary open-plan kitchen and dining area. Beyond this is the comfortable living room with plenty of space and fabulous French windows that open out onto the garden. Great news if you enjoy al fresco dining and entertaining.

Upstairs you'll find a generously sized master bedroom, a double bedroom and a single bedroom. The family sized bathroom features a separate bath and shower. Modern and energy-efficient, the Weaver is built to high standards with beautiful flooring throughout, with fitted alarm systems for extra security and peace of mind.

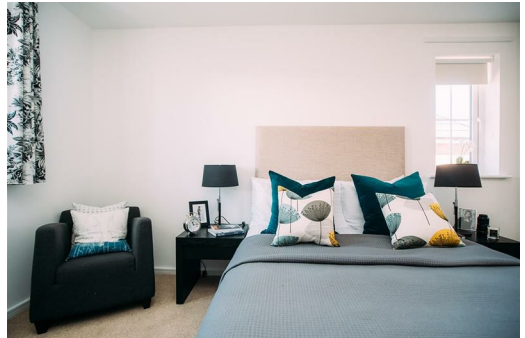
Whilst this property is a new build property, it has been previously let. All properties are maintained and inspected once a tenant has moved out in order to keep the property to a high standard.

Images are demonstrative of this property type. The images are therefore not plot or site specific and spec may vary slightly. Properties are let unfurnished.

Available 24th April 2026



3 Dorrington Way, Ellesmere Port, Cheshire, CH65 4BT



Energy Efficiency Rating		Environmental Impact (CO ₂) Rating	
Current	Potential	Current	Potential
84	96	87	93
A1	A	B	B
B	B	C	C
C	C	D	D
D	D	E	E
E	E	F	F
F	F	G	G
G	G	G	G

Ascend
Built on higher standards