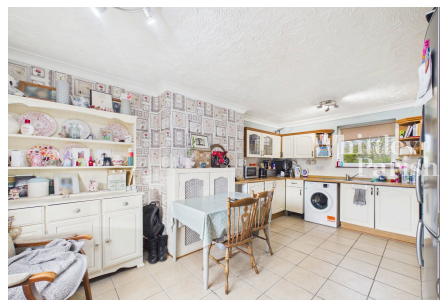
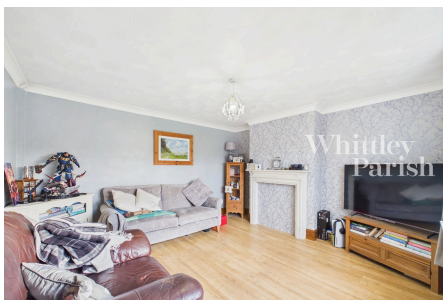


Manor Road, Long Stratton

Guide Price £250,000-£260,000

3 1 1



Offered with NO ONWARD CHAIN this three-bedroom semi-detached home is situated on a popular crescent in Long Stratton, offering a peaceful setting away from the main road and provides comfortable living within walking distance to local amenities and excellent bus routes. Upon entering, an entrance hall leads you into a cosy sitting room with front aspect views over the garden and crescent beyond. The spacious kitchen/diner is a central hub featuring ample room for dining table and chairs and being ideal for everyday meals and entertaining. A convenient rear hall provides access to a ground floor WC. To the first floor a landing serves three well-proportioned bedrooms providing comfortable accommodation for all and the family bathroom completes the upper level.

Key Features

- GUIDE PRICE £250,000-£260,000
- NO ONWARD CHAIN
- Ample off-road parking
- Walking distance to amenities
- Close proximity to bus routes
- Kitchen/diner
- Secluded and enclosed rear garden
- Three bedrooms
- Mains drainage - Oil heating
- EPC Rating E - Council Tax Band B - Freehold

