



59 POPLAR GROVE

NEW MALDEN, KT3 3DN

£790,000
FREEHOLD

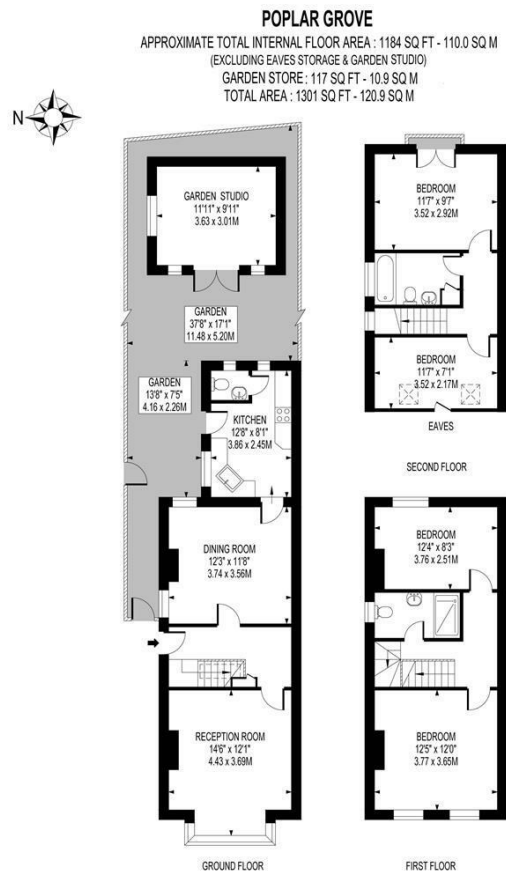
Welcome to this charming property located in the desirable area of the Groves, New Malden. This delightful home boasts two spacious reception rooms, perfect for entertaining guests or simply relaxing with your loved ones. With four bedrooms, there is ample space for the whole family to unwind and rest comfortably.

Built in 1885, this property exudes character and charm, offering a unique blend of historical appeal and modern convenience. The living space provides a warm and inviting atmosphere for you to call home.

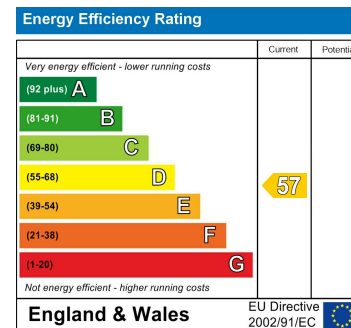
One of the standout features of this property is the garden room, a versatile space that can be used as a home office, a peaceful reading nook, or a play area for children. Step outside into the lovely patio garden where you can enjoy al fresco dining or simply bask in the sunshine on lazy afternoons.



ELIZABETH WIGHTWICK
YOUR BESPOKE PROPERTY AGENT



FOR ILLUSTRATION PURPOSES ONLY
 THIS FLOOR PLAN SHOULD BE USED AS A GENERAL OUTLINE FOR GUIDANCE ONLY AND DOES NOT CONSTITUTE IN WHOLE OR IN PART AN OFFER OR CONTRACT.
 ANY INTENDING PURCHASER OR LESSEE SHOULD SATISFY THEMSELVES BY INSPECTION, SEARCHES, ENQUIRIES AND FULL SURVEY AS TO THE CORRECTNESS OF EACH STATEMENT.
 ANY AREAS, MEASUREMENTS OR DISTANCES QUOTED ARE APPROXIMATE AND SHOULD NOT BE USED TO VALUE A PROPERTY OR BE THE BASIS OF ANY SALE OR LET.



Agents Note: Whilst every care has been taken to prepare these particulars, they are for guidance purposes only. All measurements are approximate and are for general guidance purposes only and whilst every care has been taken to ensure their accuracy, they should not be relied upon and potential buyers/tenants are advised to recheck the measurements

Wimbledon Village
 Unit 6 (2nd Floor)
 60 High Street
 Wimbledon Village
 Wimbledon
 London
 SW19 5EE

020 3597 3484
 info@elizabeth-wightwick.co.uk

