



**Ladies Mile Court, Brighton, BN1 8QN**  
Offers In The Region Of £220,000



# Ladies Mile Court, Brighton, BN1 8QN

A charming retirement apartment in a sought-after location, close to amenities and offering a well-maintained communal garden.

Welcome to Ladies Mile Court, an idyllic retirement development nestled in the heart of Patcham Old Village. A homely two bedroom apartment, perfect for those seeking a peaceful and comfortable living space.

Situated in a popular retirement block exclusively for the over 60s, this delightful apartment offers a village location that is conveniently close to local shops and bus services connecting you to the vibrant City Centre. With everything you need within easy reach, this property truly offers the best of both worlds - a tranquil sanctuary with the charm of city living just a short journey away.

As you enter the building, you'll appreciate the well-kept public ways and the convenience of a passenger lift, ensuring easy and stress-free access to your new home. The apartment itself is located on the first floor, benefiting from a south westerly aspect that fills the rooms with natural light throughout the day.

Spanning across approximately 652 sqft, this apartment provides ample space for comfortable living. The living room is the heart of this home, providing an inviting space to relax and entertain.

The double glazing keeps the space warm during the cooler months, while the electric heating ensures comfort all year round.

The well-appointed kitchen boasts functionality and style, with plenty of storage and workspace. Whip up your favourite meals while enjoying the view from the window. The two well-proportioned bedrooms offer peaceful retreats, perfect for a good night's rest. The shower room features modern fixtures, perfect for unwinding after a long day.

The community at Ladies Mile Court takes pride in maintaining a beautifully kept communal garden, providing a serene outdoor space to enjoy a breath of fresh air or socialize with like-minded neighbours. The residents' parking ensures convenience for both you and any visitors that might drop by.

Furthermore, this property is being offered with no chain, meaning the sale can proceed smoothly and without delay.

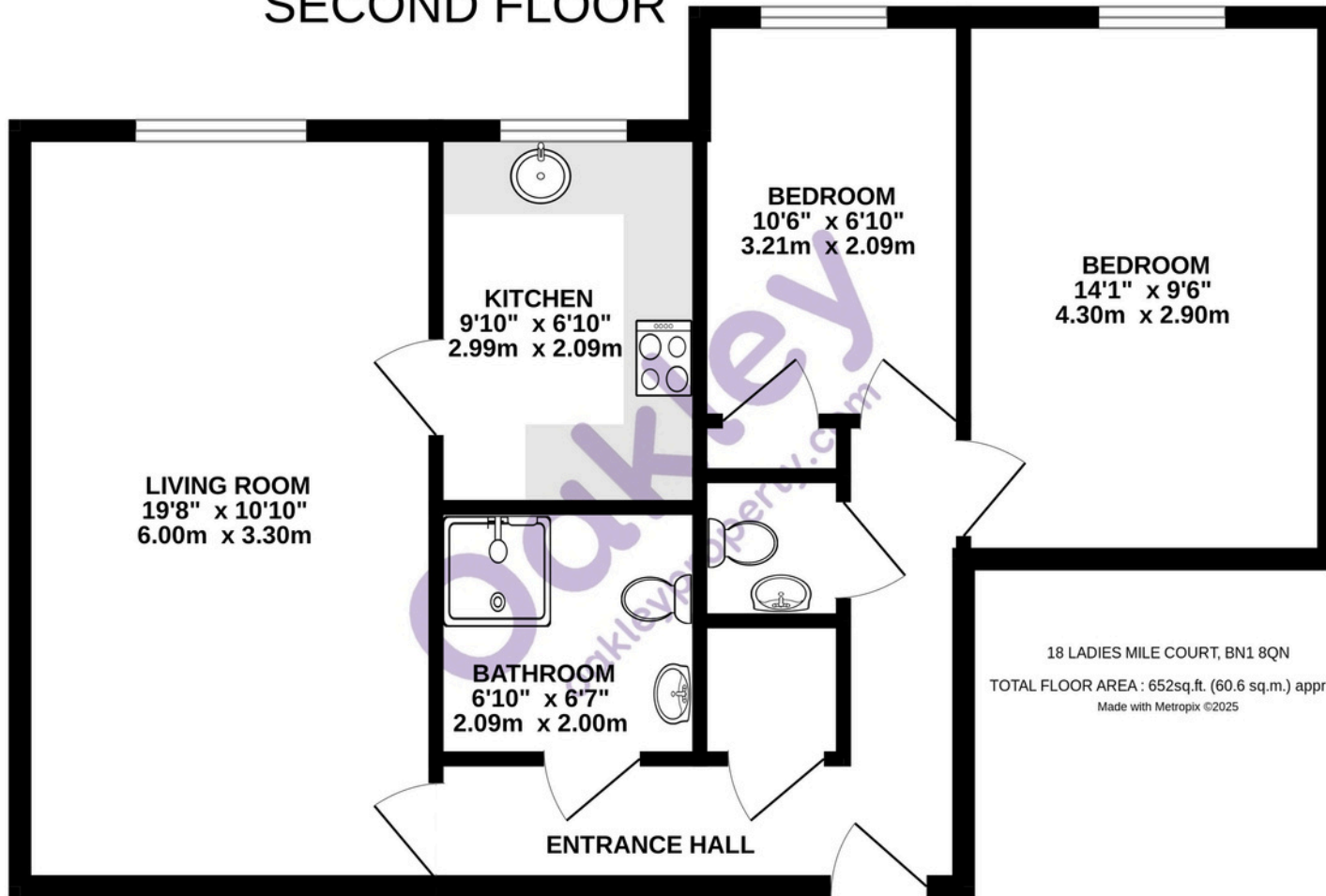
Embrace the retirement lifestyle you've always looked forward to.







## SECOND FLOOR



18 LADIES MILE COURT, BN1 8QN  
TOTAL FLOOR AREA : 652sq.ft. (60.6 sq.m.) approx.  
Made with Metropix ©2025

Agents Notes  
Tenure Leasehold  
96 Years Remaining On The Lease  
Service Charge Approx £4,610  
Ground Rent N/A  
Council Tax Band D

### Energy Performance Certificate

Score	Energy rating	Current	Potential
92+	A		
81-91	B		
69-80	C		
55-68	D	63 D	75 C
39-54	E		
21-38	F		
1-20	G		



# Oakley

Your Sussex Property Expert

**Brighton & Hove Office**  
01273 688 881  
30-31 Foundry Street, Brighton BN1 4AT  
[www.oakleyproperty.com](http://www.oakleyproperty.com)  
[sales@oakleyproperty.com](mailto:sales@oakleyproperty.com)

We also have offices in:  
Shoreham by Sea  
Lewes Town & Country



A new way of marketing property

Get in touch to book a viewing or valuation of  
your own property



Please note:

These details have been produced in good faith and are believed to be accurate based upon the information supplied but they are not intended to form part of a contract. All statements contained in these particulars as to this property are made without responsibility on the part of Oakley, the vendors or lessors and are NOT to be relied on as statements or representations of fact. Any intending purchasers must satisfy themselves by inspection or otherwise as to the correctness of each of the statements contained in these particulars. The vendors, Oakley and any person who work in their employment do not have any authority to make or give any representation or warranty. The floor plan is for illustrative purposes only and the accuracy cannot be relied upon or guaranteed and no responsibility is taken for an error, omission or mis-statement. The total floor area shown has been taken from the EPC.