

LEASEHOLD



Flat

12 GRANGE GARDENS, LONDON, N14 6QP

Asking Price

£390,000

FEATURES

- Chain Free
- Walking distance to Southgate Tube
- Lift
- Separate Lounge
- Long Lease of 165 years
- Close to local amenities
- Two Bedrooms
- Separate Kitchen



RASH & RASH

2 Bedroom Flat located in London

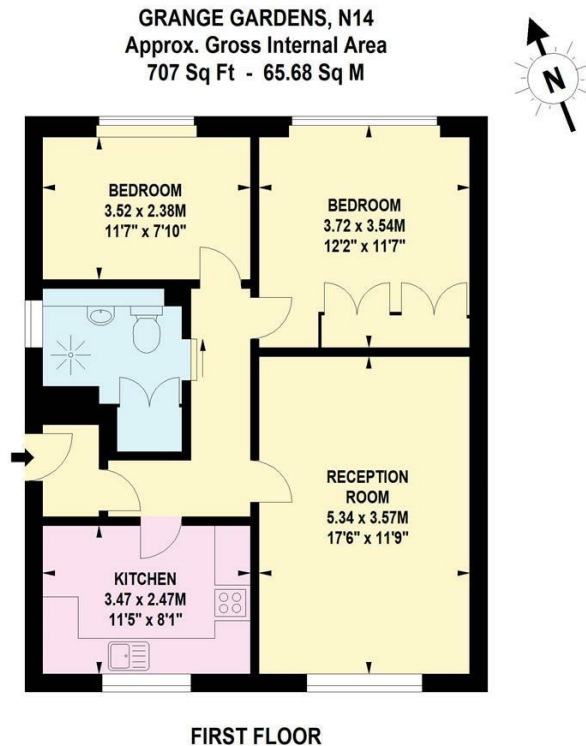
*** Chain Free *** An excellent opportunity to purchase this two bedroom first floor apartment situated in a quiet and well maintained development in the heart of Southgate.

The property offers a generous lounge with ample space for dining table and a separate kitchen along with two good sized bedrooms and a shower room.

Additional benefits include a lift, a gated allocated and covered parking space, secure entry and a peaceful setting, while remaining conveniently located close to a wide range of local amenities.

Shops, restaurants, leisure and sports facilities, and highly sought after schools are all nearby, with Southgate Underground Station just a stone's throw away, offering excellent transport links into Central London.

This apartment would make an ideal purchase for first-time buyers, professionals, or investors alike with a rental of up to £1,850pcm.



Call us on

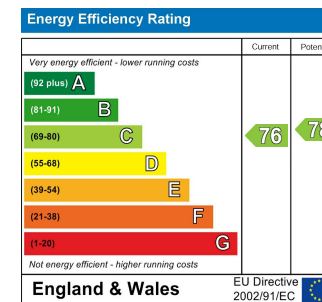
02088822828

info@rashandrash.com

<https://www.rashandrash.com/>

Council Tax Band

D



Agents Note: Whilst every care has been taken to prepare these particulars, they are for guidance purposes only. All measurements are approximate and are for general guidance purposes only and whilst every care has been taken to ensure their accuracy, they should not be relied upon and potential buyers are advised to recheck the measurements.

RASH & RASH