



£145,000

*At a glance...*



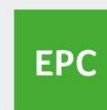
1



1



1



EPC

C



COUNCIL  
TAX

A

**holland  
& odam**

11 Moonraker Square  
Street  
Somerset  
BA16 0GB

**TO VIEW**

3 Farm Road, Street,  
Somerset BA16 0BJ

**01458 841411**

[street@hollandandodam.co.uk](mailto:street@hollandandodam.co.uk)



## Directions

From the town centre proceed in a westerly direction passing Living Homes on the right. Continue, passing a former car dealership on the left and shortly after passing the Morrisons convenience store also on the left, turn right into the Icon development. Turn right again into Lime Tree Square, then left into Couture Grove. Continue to the very end, turning left and proceed to the end of the road where Moonraker Square will be found directly in front of you. No 11 can be accessed via the entrance on the left hand side.

## Services

Mains electricity, water and drainage are connected. Electric heating system.

## Local Authority

Somerset Council  
0300 1232224  
somerset.gov.uk

## Tenure

Leasehold

Length of Lease- **155 years from 2014 (143 years left)**

Service/Maintenance Charges -**£1780.20 P/A (£148.35 monthly) from July 2026**

Ground Rent- **£200.00 P/A**



## Location

The property is situated within walking distance of the town centre with its good range of shops, banks and cafes. Street also has a good range of sporting and recreational facilities including both indoor and open air swimming pools, tennis and bowls facilities and Strode Theatre. The historic town of Glastonbury is 2 miles and the Cathedral City of Wells 8 miles. The nearest M5 motorway interchange at Dunball (Junction 23) is 12 miles whilst Bristol, Bath, Taunton and Yeovil are all within commuting distance.

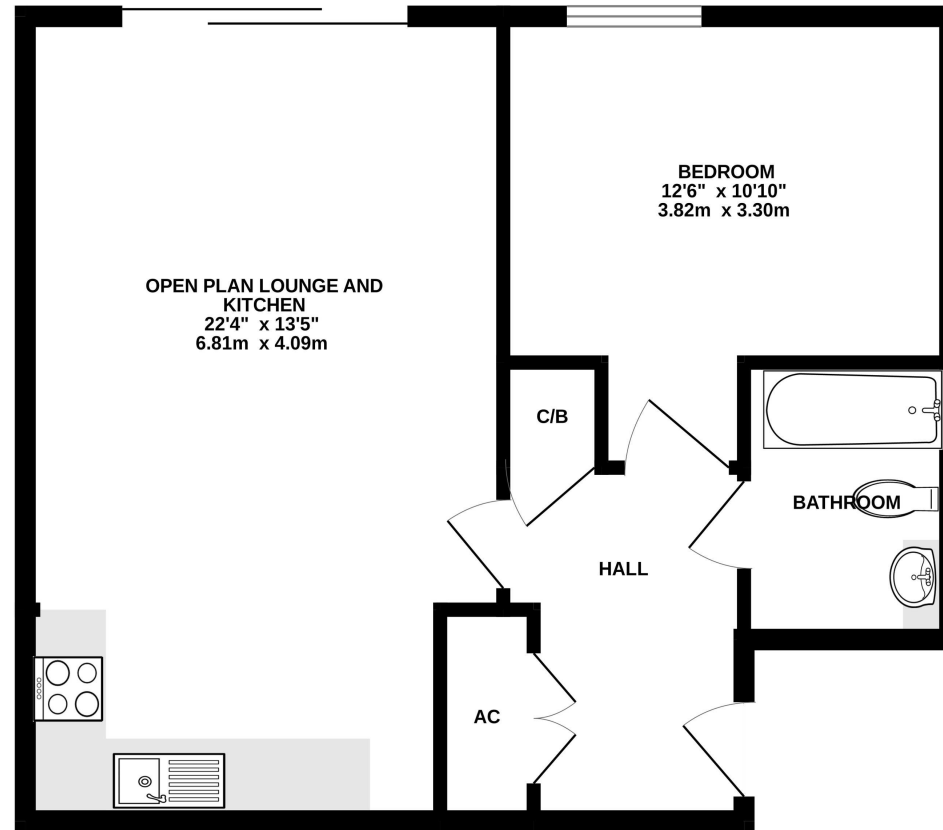
## Insight

Available with no onward chain is this beautifully presented and tastefully decorated, second-floor executive apartment, located within the popular Houndwood development. Offering stylish and well-maintained accommodation throughout, the property presents an ideal opportunity for professionals, first-time buyers or buy-to-let investors alike.

- Enjoying a generous sized open plan kitchen/living room which is bright and airy with sliding doors opening to the Juliet balcony.
- Well-appointed kitchen fitted with a range of wall, base and drawer units, worktop surfaces, built-in oven and hob, with space for a washing machine and free standing fridge/freezer.
- One well-proportioned double bedroom with floor to ceiling window which floods the rooms with an abundance of natural light.
- The apartment is served by a well-appointed bathroom comprising a bath with shower over, wash basin, WC and heated towel rail.
- Spacious entrance hall with two good-sized storage cupboards, ideal for coats, shoes and everyday household items.
- The property further benefits from an allocated parking space, providing convenient parking within the development.
- From the ground-floor communal hall, residents have access to the bin and recycling store, bike store and post room.



GROUND FLOOR  
545 sq.ft. (50.6 sq.m.) approx.



TOTAL FLOOR AREA : 545 sq.ft. (50.6 sq.m.) approx.

Whilst every attempt has been made to ensure the accuracy of the floorplan contained here, measurements of doors, windows, rooms and any other items are approximate and no responsibility is taken for any error, omission or mis-statement. This plan is for illustrative purposes only and should be used as such by any prospective purchaser. The services, systems and appliances shown have not been tested and no guarantee as to their operability or efficiency can be given.  
Made with Metropix ©2025

**DISCLAIMER**

CONSUMER PROTECTION FROM UNFAIR TRADING REGULATIONS 2008. The Agent has not tested any apparatus, equipment, fixtures and fittings or services and so cannot verify that they are in working order or fit for the purpose. A Buyer is advised to obtain verification from their Solicitor or Surveyor. References to the Tenure of a Property are based on information supplied by the Seller. The Agent has not had sight of the

title documents. A Buyer is advised to obtain verification from their Solicitor. Items shown in photographs are not included unless specifically mentioned within the sales particulars. They may however be available by separate negotiation. Buyers must check the availability of any property and make an appointment to view before embarking on any journey to see a property.

DATA PROTECTION. Personal information provided by customers wishing to receive information and/or services from the estate agent and the Property Sharing Experts (of which it is a member) for the purpose of providing services associated with the business of an estate agent but specifically excluding mailing or promotions by a third party. If you do not wish your personal information to be used for any of these purposes, please notify us.