



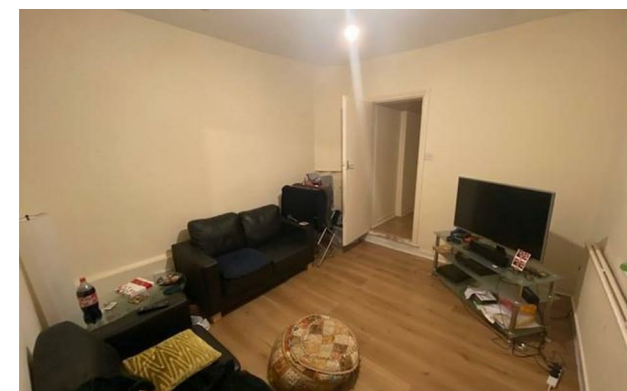
Jordan fishwick

112 Dickenson Road, M14 5HS
Guide Price £1,295 Per Calendar Month



**Dickenson Road Fallowfield
M14 5HS**

£1,295 Per Calendar Month



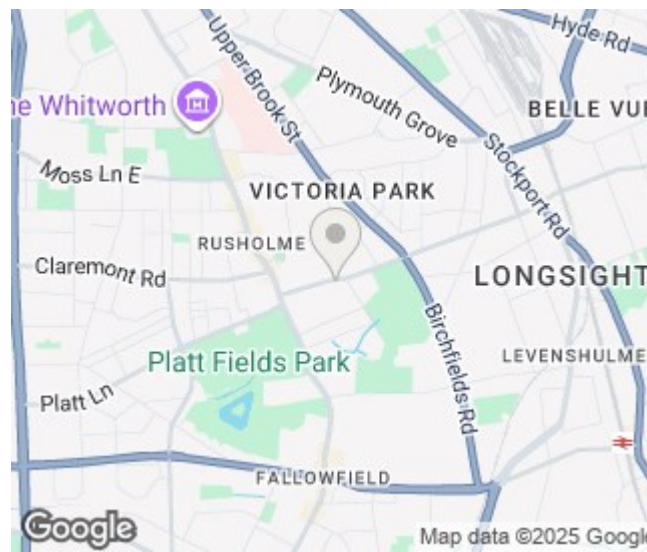
The Property


*** AVAILABLE 1st JULY 2026 *** STUDENT PROPERTY *** NO DEPOSIT OPTION AVAILABLE *** BILLS PACKAGE AVAILABLE
*** We have a spacious ground floor student property in the heart of Fallowfield. The property is a short five minute walk to the famous Curry Mile and situated next to major bus routes into Manchester City Centre and to the universities. Boasting two double bedrooms, shower room, large lounge and rear kitchen that overlooks the yard. This Victorian terrace has been converted into two self-contained flats and is fully furnished. No deposit option available. To book a viewing please contact our Didsbury office.

View our Virtual Tour Here - <https://youtu.be/52TxYy4hjtI>

EPC Rating - D // Council Tax Band A

- Available July 2026
- Two Bedroom Apartment
- Student Property
- Fully Furnished
- Spacious Living Area
- Bills Package Available
- Great Location
- No Deposit Option Available
- Council Tax Band A
- EPC Rating D



Energy Efficiency Rating		
	Current	Potential
Very energy efficient - lower running costs		
(92 plus) A		
(81-91) B		
(69-80) C		75
(55-68) D	59	
(39-54) E		
(21-38) F		
(1-20) G		
Not energy efficient - higher running costs		
England & Wales	EU Directive 2002/91/EC 	





These particulars are believed to be accurate but they are not guaranteed and do not form a contract. Neither Jordan Fishwick nor the vendor or lessor accept any responsibility in respect of these particulars, which are not intended to be statements or representations of fact and any intending purchaser or lessee must satisfy himself by inspection or otherwise as to the correctness of each of the statements contained in these particulars. Any floorplans on this brochure are for illustrative purposes only and are not necessarily to scale.

Offices at: Chorlton, Didsbury, Disley, Hale, Glossop, Macclesfield, Manchester Deansgate, Manchester Whitworth Street, New Mills, Sale, Wilmslow and Withington