



**Brunswick Square, Hove, BN3 1ED**

Offers Over **£350,000**

**JS**  
Jacobs|Steel



**Property Type:** Flat

**Bedrooms:** 1

**Bathrooms:** 2

**Receptions:** 1

**Tenure:** Share of Freehold

**Council Tax Band:** C

- Offers Over £350,000
- Large one-bedroom apartment
- Prestigious Brunswick Square location
- Unofficial roof terrace with panoramic sea and city views
- Spacious open-plan living and kitchen area
- Ensuite bedroom plus separate shower room
- High ceilings and period character
- Moments from the seafront
- Close to shops, cafés, and local amenities
- Share of Freehold

**Offers Over £350,000** | Large one-bedroom apartment | Prestigious Brunswick Square location | Unofficial roof terrace with panoramic sea and city views | Spacious open-plan living and kitchen area | Ensuite bedroom plus separate shower room | High ceilings and period character | Moments from the seafront | Close to shops, cafés, and local amenities | Share of Freehold |





## Offers Over £350,000

Situated within one of Hove's most prestigious Regency Garden squares, this large one-bedroom top floor apartment occupies an enviable position within a charming period building in Brunswick Square. Just moments from the seafront and promenade, the property offers a rare opportunity to enjoy spacious coastal living combined with stunning elevated views.

Located on the top floor, the apartment benefits from excellent natural light throughout and a sense of privacy, while its elevated position allows for impressive panoramic views across the city skyline and out towards the sea.

The heart of the home is the spacious open-plan living and kitchen area, designed to create a bright and versatile space ideal for both everyday living and entertaining. The living area provides ample room for comfortable seating and dining, while the kitchen is well-positioned within the space and fitted with modern cabinetry, worktops, and integrated appliances. The open layout enhances the sense of space and allows light to flow freely through the room.

The generous double bedroom is well-proportioned and providing useful storage while maintaining a clean and uncluttered feel. The bedroom also features a stylish en-suite bathroom, finished with contemporary fittings and a modern design.

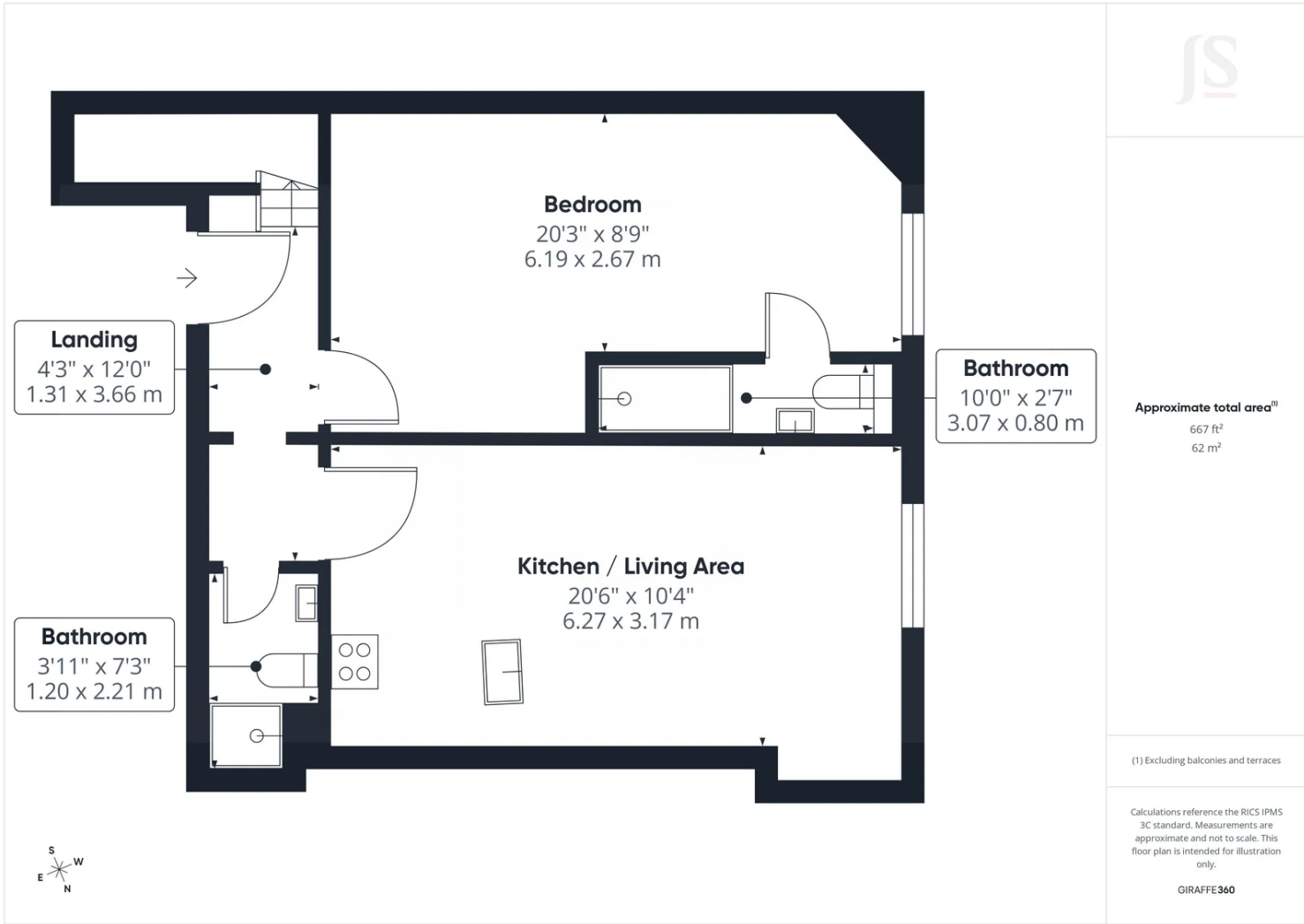
In addition to the en-suite, the apartment further benefits from a separate shower room, offering added practicality and convenience for guests or additional household use.

A particularly unique feature of the property is the unofficial roof terrace, which provides a fantastic outdoor space to relax and enjoy far-reaching panoramic views of the sea and the surrounding cityscape. This elevated vantage point makes it a wonderful spot to unwind, especially during warmer months.

The property also benefits from share of freehold, an attractive feature for buyers seeking long-term security and greater control over the building.

Brunswick Square is widely regarded as one of the most desirable addresses in Hove, known for its beautiful Regency architecture and central garden square. The apartment is just a short walk from Hove seafront, while the many independent cafés, restaurants, and shops of Hove and nearby Brighton are easily accessible. Excellent transport links are also close by, including regular bus routes along the coast and convenient access to Brighton railway station and Hove railway station.





Whilst we endeavour to make our properties particulars accurate and reliable, we have not carried out a detailed survey. If there is any point which is of particular importance to you, please contact the office and we will be pleased to check the information for you, particularly if you are contemplating travelling some distance. Whilst every effort has been made to ensure that any floorplans are correct and drawn as accurately as possible, they are to be used for layout and identification purposes only and are not drawn to scale. The services, where applicable, including electrical equipment and other appliances have not been tested and no warranty can be given that they are in working order, even where described in these particulars. Carpets, curtains, furnishing, gas fires, electrical goods/ fittings or other fixtures, unless expressly mentioned, are not necessarily included with the property.