





GUIDE PRICE: £1,200,000
TENURE: LEASEHOLD - 116
YEARS REMAINING
SERVICE CHARGE: £7,524
INC RESERVE FUND
COUNCIL TAX BAND: G
EPC : D

ARLINGTON

RESIDENTIAL

8 Wellington Road, St. John's Wood, London NW8 9SP
info@arlingtonresidential.com

+44 (0)20 7722 3322
arlingtonresidential.com



Beautifully refurbished and immaculately presented throughout, this exceptional four-bedroom, three-bathroom lateral apartment occupies a prime ground floor position within a prestigious and well-maintained mansion block.

Combining elegant period character with contemporary design, the property offers an impressive reception room with high ceilings and large double-glazed windows, creating a bright and inviting living and entertaining space. The stylish kitchen is thoughtfully designed with a comprehensive range of bespoke wall and base units, integrated appliances, and premium work surfaces.

All four bedrooms are generously proportioned, providing excellent accommodation for families and guests alike, while the three beautifully appointed bathrooms have been finished to an exacting standard.

Further benefits include a long lease, daily porter service, and an abundance of natural light throughout.

Ideally positioned to enjoy the amenities of Swiss Cottage, Hampstead, Belsize Park, and Finchley Road, the apartment is perfectly placed for outstanding transport connections, boutique shopping, renowned restaurants, and some of North West London's most desirable green open spaces.

















NORTHWAYS

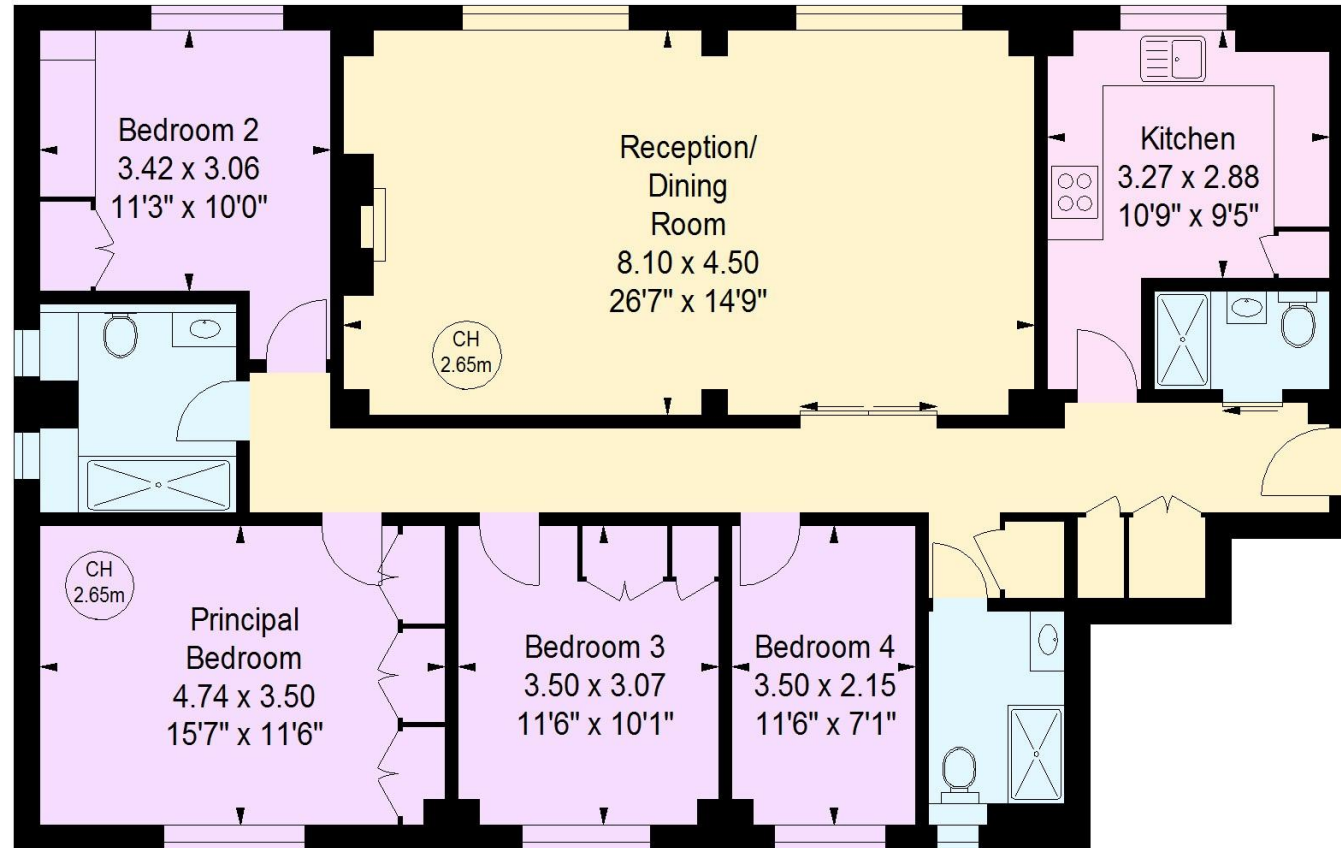
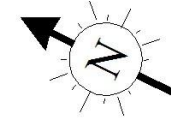


Ground Floor

Northways, NW3

Approximate gross internal area
1405 sq ft / 130.52 sq m

Key :
CH - Ceiling Height



Ground Floor

The floor plan is not to scale and measurements and areas shown are approximate and therefore should be used for illustrative purposes only. The plan has been prepared in accordance with the RICS code of Measuring Practice and whilst we have confidence in the information produced, it must not be relied on. If there is any aspect of particular importance, you should carry out or commission your own inspection of the property.
Copyright of Stu J Beesley.