



2 Fernlea Court Lydd Road

Camber Rye, TN31 7RS

Price £130,000

Located in the popular seaside village of Camber within walking distance of the sandy beach and sand dunes is this two bedroom first floor maisonette which is being sold with no onward chain.

The accommodation comprises of sitting room, kitchen, two bedrooms and a family bathroom.

There is off road parking to the front and the property also benefits from double glazing.

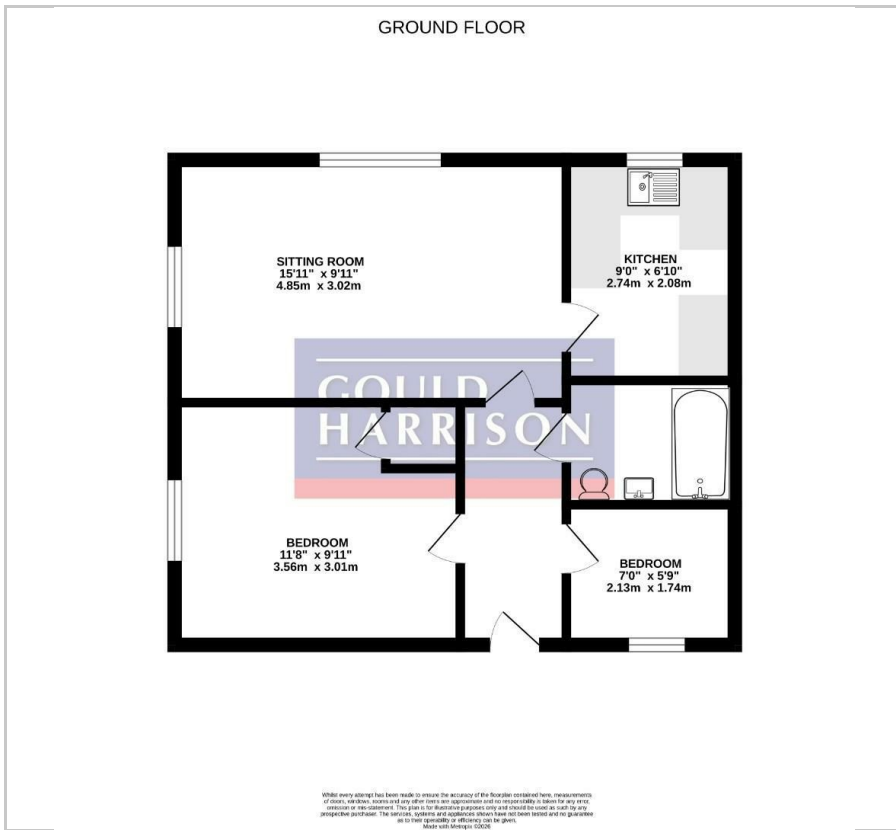
- FIRST FLOOR MAISONETTE
- TWO BEDROOMS
- SITTING/DINING ROOM
- SHORT WALK FROM THE SANDS
- NO ONWARD CHAIN
- OFF ROAD PARKING

Viewing

Please contact our Ashford Office on 01233 646411 if you wish to arrange a viewing appointment for this property or require further information.



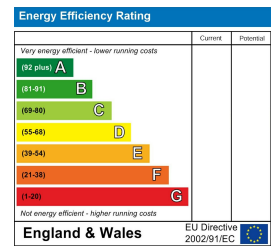
Floor Plan



Area Map



Energy Efficiency Graph



These particulars, whilst believed to be accurate are set out as a general outline only for guidance and do not constitute any part of an offer or contract. Intending purchasers should not rely on them as statements of representation of fact, but must satisfy themselves by inspection or otherwise as to their accuracy. No person in this firm's employment has the authority to make or give any representation or warranty in respect of the property.