



Castle Lea | | Caldicot | NP26 4HS

£359,999

Description

FOUR DOUBLE BEDROOM HOME IN A
HIGHLY DESIRABLE LOCATION!

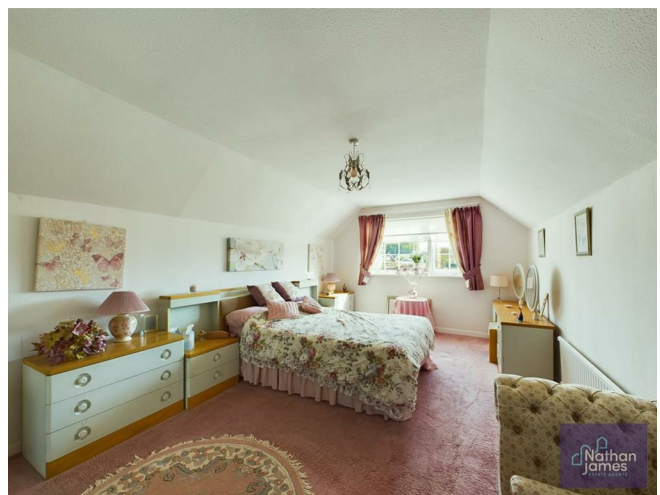
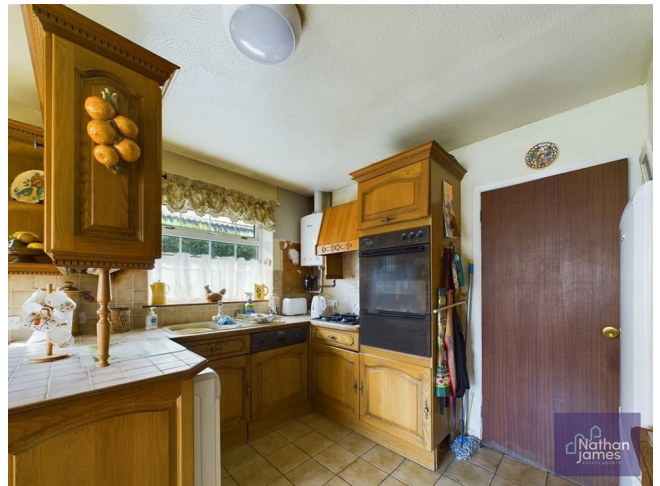
This is a remarkable opportunity to acquire a family home situated in the sought-after area of Castle Lea. The property boasts a generous amount of living space, including an entrance hallway, lounge, kitchen/dining room, two additional bedrooms, and a bathroom on the ground floor. The upper level features two double bedrooms and a shower room.

The gardens envelop the property, offering a low-maintenance rear garden with a patio area, as well as lawns on the side and a front driveway that accommodates multiple vehicles, leading to a separate garage.

Conveniently located just a short walk from Caldicot Town Centre, residents will enjoy easy access to supermarkets, medical facilities, pharmacies, and local shops. Additionally, Caldicot Castle and Country Park are nearby, providing lovely walking opportunities around the grounds.

Contact Nathan James today to schedule a viewing!

Council Tax Band: E





Floor plans



Floor 0



Floor 1



Approximate total area¹⁾
1360.88 ft²
Reduced headroom
16.15 ft²

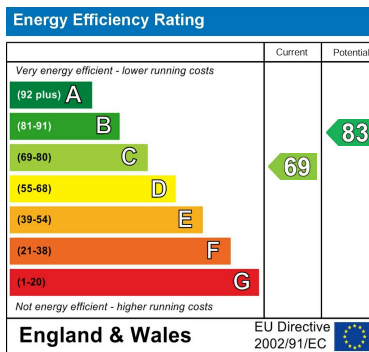
(1) Excluding balconies and terraces

Reduced headroom
..... Below 5 ft

While every attempt has been made to ensure accuracy, all measurements are approximate, not to scale. This floor plan is for illustrative purposes only.

Calculations are based on RICS IPMS 3C standard.

GIRAFFE360



8 Newport Road
Caldicot
Monmouthshire
NP26 4HX
01291 421600

nj@nathanjamesestateagents.co.uk
nathanjamesestateagents.com