



**Devonshire Close, W1G**  
**£5,000,000**

**Dexters**





## Devonshire Close, W1G

A four bedroom, four bathroom freehold house in an attractive cobbled mews moments from Marylebone High Street and Regent's Park.

Arranged over three floors. The ground floor has a wide entrance hallway with guest cloakroom and opens to a dual aspect reception room and a kitchen diner with windows to two sides overlooking the mews. A staircase leads to all floors. The lower ground floor has two en suite bedrooms, a kitchenette and a large recreation room leading to a wine vault. The first floor is occupied by the main bedroom with walk in dressing room and en suite bathroom. Additionally there is a guest bedroom with an en suite bathroom.

Devonshire Close is a no through mews on a distinctive H plan accessed from Devonshire Street.

### Features

- Four Double Bedrooms
- Four Bathrooms
- Two Reception Rooms
- Kitchen - Breakfast Room
- Wine Vault
- Freehold



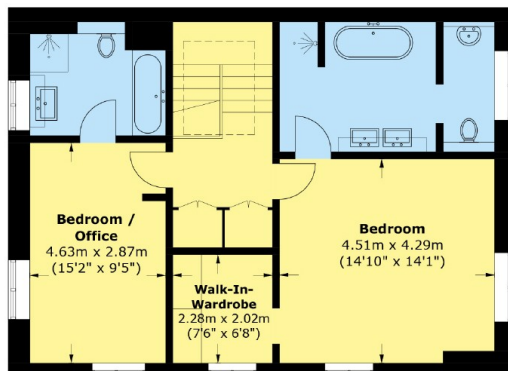








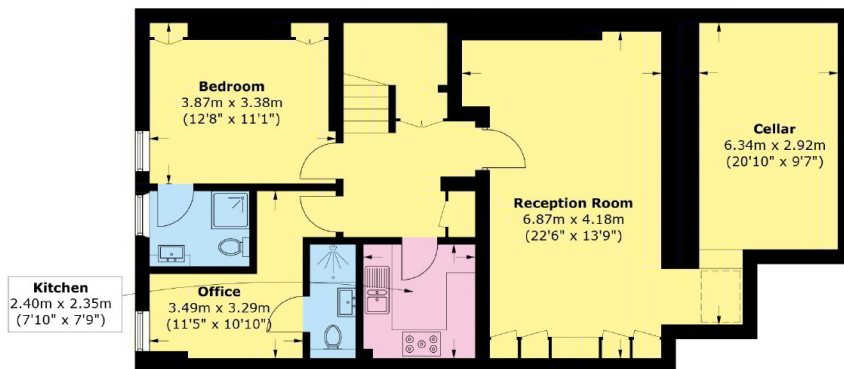
# Devonshire Close, London, W1G



**First Floor**



**Ground Floor**



**Basement**

Approx Internal Area : 226.8 sq. m (2,441.2 sq. ft)

Cellar : 16.1 sq. m (173.3 sq. ft)

Total : 242.9 sq. m (2,614.5 sq. ft)