

CHEYNE COURT
Chelsea, SW3

MARSH & PARSONS

WELCOME TO CHEYNE COURT



ABOUT THE HOME

An opportunity to acquire a refined London home in one of Chelsea's most sought-after addresses. Positioned within the iconic Cheyne Court, this beautifully presented three bedroom apartment blends classic Chelsea charm with modern comfort.

- Three bedrooms
- 24-hour porter
- Lift access
- Chelsea
- River view
- Beautifully finished





THE FINER DETAILS

Enjoying partial views of the River Thames, the home is filled with natural light. The property features elegant reception spaces ideal for both relaxed living and entertaining, while large windows frame tranquil glimpses of the river. The principal bedroom comes with excellent storage and an en suite bathroom, along with two further well-proportioned bedrooms, and a stylish family bathroom.

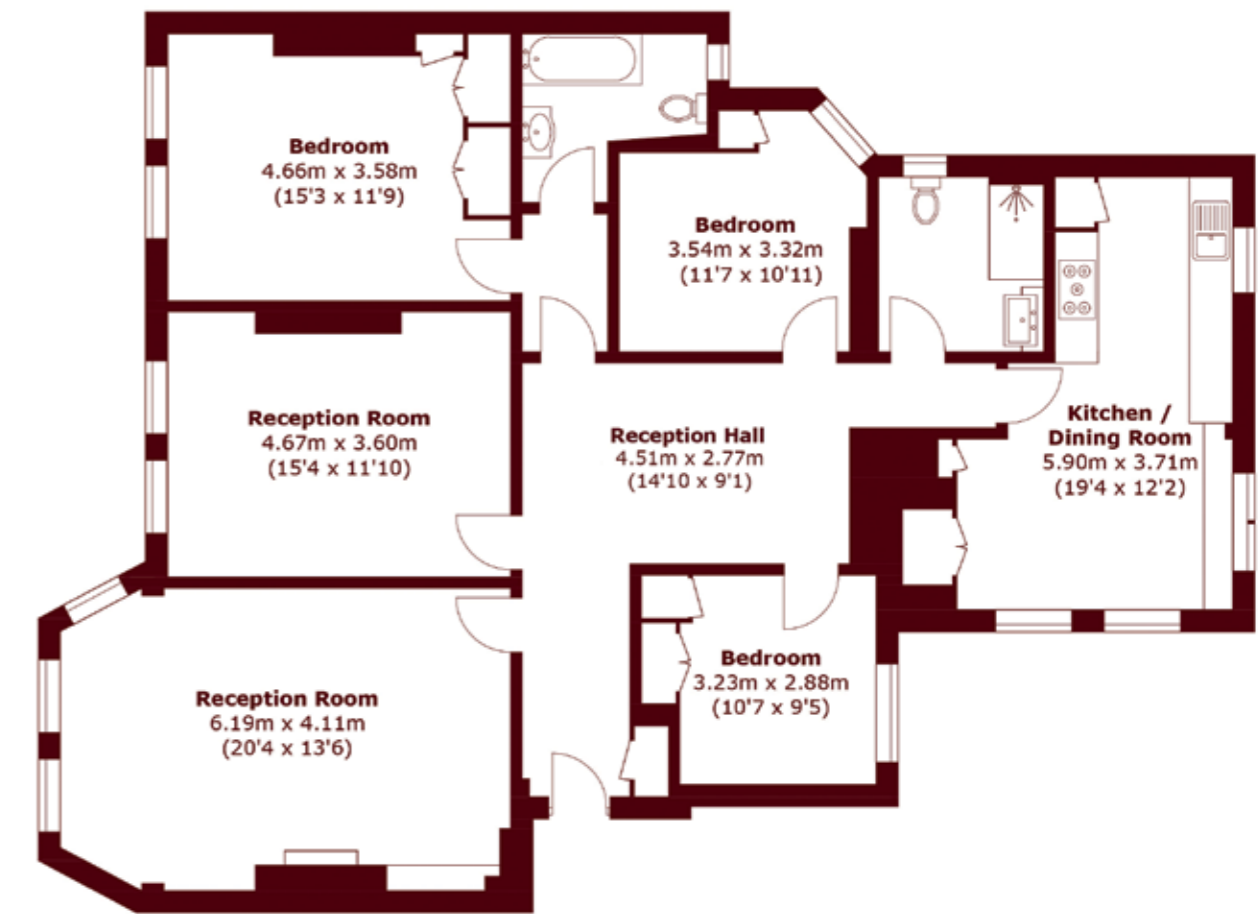
A thoughtfully designed kitchen and dining area offers contemporary finishes and a practical layout. Residents benefit from a 24-hour porter service, providing security and convenience. Located on historic Cheyne Walk, the apartment is moments from Chelsea's boutiques, galleries, and cafés, while retaining a peaceful riverside atmosphere.



STEP INSIDE CHEYNE COURT

South Kensington
29 Harrington Road, SW7 3HD
Sales: 020 7590 0800

Energy rating: C. We aim to make our particulars both accurate and reliable. However, they are not guaranteed; nor do they form part of an offer or contract. If you require clarification on any points then please contact us, especially if you're traveling some distance to view. Please note that appliances and heating systems have not been tested and therefore no warranties can be given as to their good working order.



Third Floor

Total approx. floor area 1,502.6 sq. ft (139.6 sq. m)

MARSH *&* PARSONS