

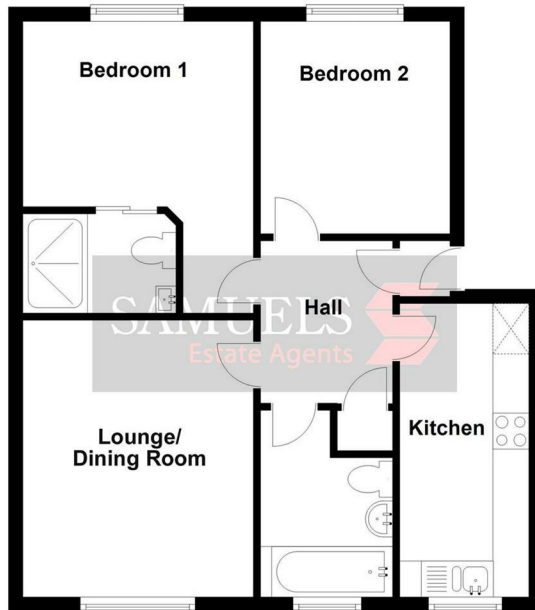


17 Lewis Crescent, Exeter, EX2 7TD

To Let £1,100 PCM

robson
lettings
Dedicated Lettings & Property Advisers

- Second Floor Apartment
- Close to a wide range of amenities
- Allocated Parking space
- Excellent Road Links
- Two Bathrooms
- Modern Kitchen
- Local Train Station



Total area: approx. 51.9 sq. metres (558.4 sq. feet)

THE PROPERTY

We are pleased to present this well-appointed second-floor apartment, ideally situated in a sought-after location with excellent access to local amenities, a direct train service into Exeter city centre, and key transport links.

The property is accessed via a communal entrance, with stairs leading to the second floor. Upon entering, you'll find an entrance lobby and hallway leading to a modern kitchen, complete with space for appliances. The spacious living room offers a comfortable space for relaxation and entertaining. There are two generously sized bedrooms, including a master suite with a modern recently updated ensuite.

In addition to the en-suite, the apartment benefits from a further bathroom with shower over the bath.

The property is further complemented by gas central heating, uPVC double glazing, and a private allocated parking space.

This apartment is an excellent choice for those seeking a modern home with easy access to both city amenities and transport links.

Council Tax Band B. Energy Efficiency Rating 'C'. Unfurnished. Available early July.