



Windsor Road, W5

LONG LET. Well located in the heart of Ealing this large one bedroom flat is situated moments away from the vast array of shops in Ealing Broadway and the open spaces of Ealing Common.

- Central Ealing location
- Modern interior
- Unfurnished
- Permit Parking
- Available early May 2026
- Close to local amenities and transport

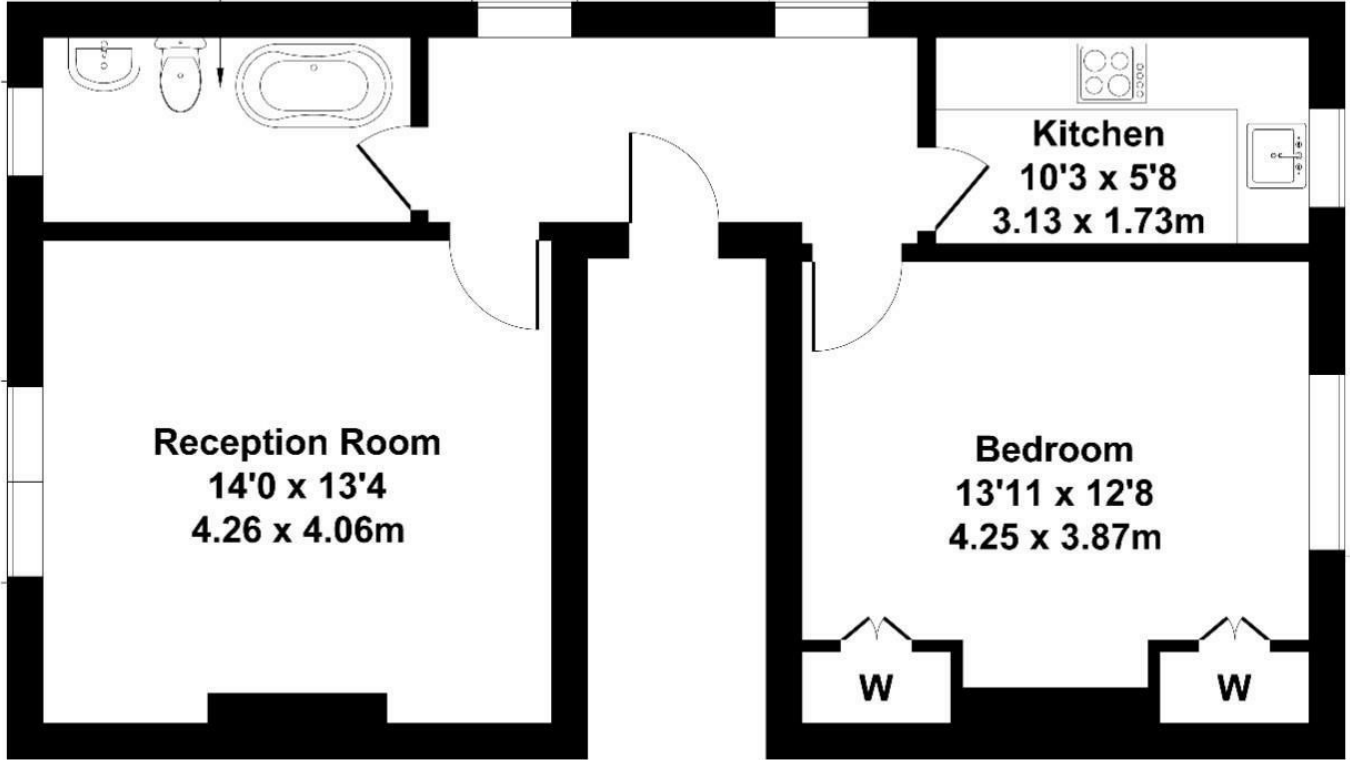
£1,850 PCM

Windsor Road

Approximate Gross Internal Area
560 sq ft - 52 sq m



Bathroom
10'1 x 5'1
3.08 x 1.55m



FIRST FLOOR

Not to Scale. Produced by The Plan Portal 2026
For Illustrative Purposes Only.

| Energy Efficiency Rating | | |
|--|----------------------------|-----------|
| | Current | Potential |
| <i>Very energy efficient - lower running costs</i> | | |
| (92 plus) A | | |
| (81-91) B | | |
| (69-80) C | | |
| (55-68) D | | |
| (39-54) E | | |
| (21-38) F | | |
| (1-20) G | | |
| <i>Not energy efficient - higher running costs</i> | | |
| England & Wales | EU Directive 2002/91/EC | |