



## Dollis Valley Drive, EN5

£2,100 Per calendar month

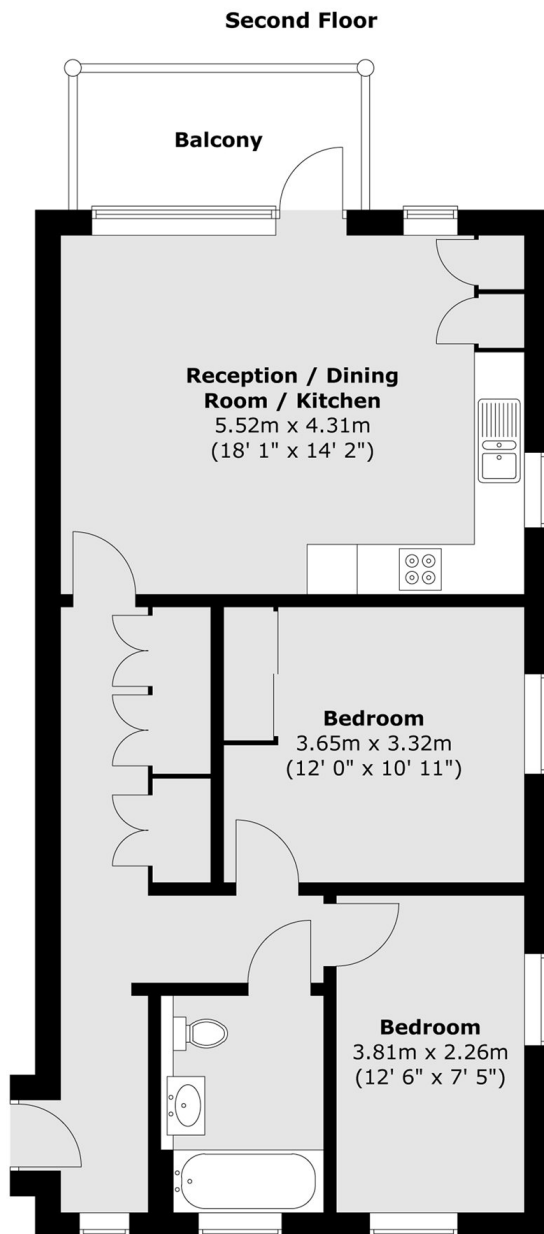
This modern two bedroom flat is located on the second floor of a newly constructed building. The apartment features a private balcony and an exclusive parking space. As a south-facing corner unit with dual aspect windows, it benefits from an abundance of natural light.

Situated just a short walk from High Barnet station, the flat offers easy access to Kings Cross Station and Euston Stations.

### Features

- Two Bedrooms
- One Bathroom
- One Reception
- Parking
- Balcony
- Modern Building

# Dollis Valley Drive, Barnet, EN5



Total area (approx.) : 65.5 sq. m (705 sq. ft)  
Total balcony area (approx.) : 5.6 sq. m (60 sq. ft)