

## Saltram Crescent, W9

£369 Per week

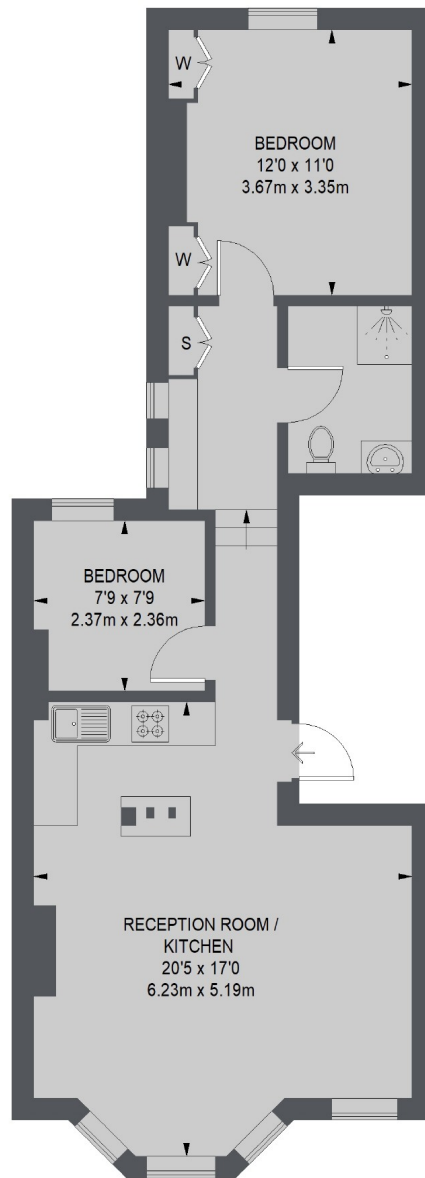
This spacious first floor flat has a large open-plan reception with an adjacent kitchen, double bedroom with built-in storage, a smaller bedroom / home office and a modern shower room. The whole flat has been refurbished with wooden floors throughout and underfloor heating in

Situated halfway up Saltram Crescent, the flat is within a few minutes walk of the shopping and transport facilities of Queens Park (Salisbury Road) and Maida Vale as well as the Sunday Farmer's Market and Paddington rec.

### Features

- Period Conversion
- First Floor Flat
- Two Bedrooms
- Open-Plan Reception
- Wooden Flooring
- Dishwasher

## Saltram Crescent, Maida Vale, W9



FIRST FLOOR

TOTAL APPROX. FLOOR AREA  
611 SQ. FT. (56.79 SQ. M.)

### Contact

To arrange a viewing call our office on the number below or visit our website.



Energy Rating: D. We aim to make our particulars both accurate and reliable. However they are not guaranteed; nor do they form part of an offer or contract. If you require clarification on any points then please contact us, especially if you're traveling some distance to view. Please note that appliances and heating systems have not been tested and therefore no warranties can be given as to their good working order.