

# Emma Terry Homes

*moving made personal*



9 Main Street

Gunthorpe, Nottingham, NG14 7EY

Asking price £425,000



# 9 Main Street, Gunthorpe, Nottingham NG14 7EY

## Asking price £425,000

Situated in the heart of the highly desirable riverside village of Gunthorpe, this spacious four-bedroom detached family home offers generous and versatile accommodation, perfectly suited to family living.

The property is beautifully presented throughout and comprises an entrance hall, a shaker-style kitchen, a spacious open-plan living and dining room with patio doors opening onto the rear garden, a separate office ideal for home working, and a convenient ground floor WC. The layout provides excellent space for both everyday family life and entertaining.

To the first floor are four well-proportioned double bedrooms, including a generous principal bedroom benefitting from fitted wardrobes and an en-suite shower room. The remaining bedrooms are served by a spacious family bathroom fitted with a four-piece suite.

Outside, the property continues to impress with a block-paved driveway providing off-street parking for multiple vehicles, alongside an integral garage. The private rear garden has been beautifully maintained and features a patio seating area, lawn, mature trees and established planting. A particular highlight is the summer house complete with power, lighting and heating, creating a fantastic space for a home office, gym, studio or entertaining area.

Located just a short stroll from the River Trent, popular riverside pubs and restaurants, village amenities and scenic countryside walks, this fantastic family home offers the perfect balance of village charm and modern convenience. Early viewing is highly recommended to fully appreciate the space and lifestyle on offer.



### ENTRANCE HALL

Entrance door to property, a central heating radiator, doors through to Study, WC, Kitchen and Lounge and stairs to first floor.

### STUDY

A central heating radiator, UPVC double glazed window to front and pedestrian door to garage.

### WC

Low level flush WC, wash hand basin with mixer tap and a central heating radiator.

### KITCHEN

A variety of wall and base units, Neff built-in double oven, ceramic hob and extractor fan, sink with mixer tap and drainer, space for washing machine, dryer, dishwasher and fridge/freezer, a central heating radiator, UPVC double glazed box bay window to front and side entrance door to property.

### DINING ROOM

A central heating radiator, sliding glass door to rear and access through to Kitchen and Lounge.

### LOUNGE

A central heating radiator, electric fire and sliding glass door to rear.

### LANDING

Doors through to Master Bedroom, Bedroom 2, 3 and 4 and Bathroom.

### MASTER BEDROOM

A central heating radiator, two built-in wardrobes, door through to ensuite and UPVC double glazed window to rear.

### ENSUITE

Low level flush WC, double vanity unit, separate shower enclosure, heated towel rail and UPVC double glazed obscure window to side.

## BEDROOM 2

A central heating radiator, built-in wardrobe and UPVC double glazed window to front.

## BEDROOM 3

A central heating radiator, built-in wardrobe and UPVC double glazed window to rear.

## BEDROOM 4

A central heating radiator and two UPVC double glazed windows to front.

## BATHROOM

Low level flush WC, bidet, wash hand basin with mixer tap, corner bath with traditional bath shower mixer, a central heating radiator and PVC double glazed obscure window to side.

## OUTSIDE

To the front of the property, a block-paved driveway provides off-street parking for multiple vehicles and leads to the garage. An attractive low brick wall and mature hedging create a welcoming frontage, with

gated side access leading to the rear garden.

The private west-facing rear garden has been beautifully maintained and offers a wonderful outdoor space to enjoy throughout the day. Featuring a patio seating area, shaped lawn and established shrub borders and mature trees. The garden also includes an outside tap, external lighting and a summer house.

## GARAGE

## SUMMERHOUSE









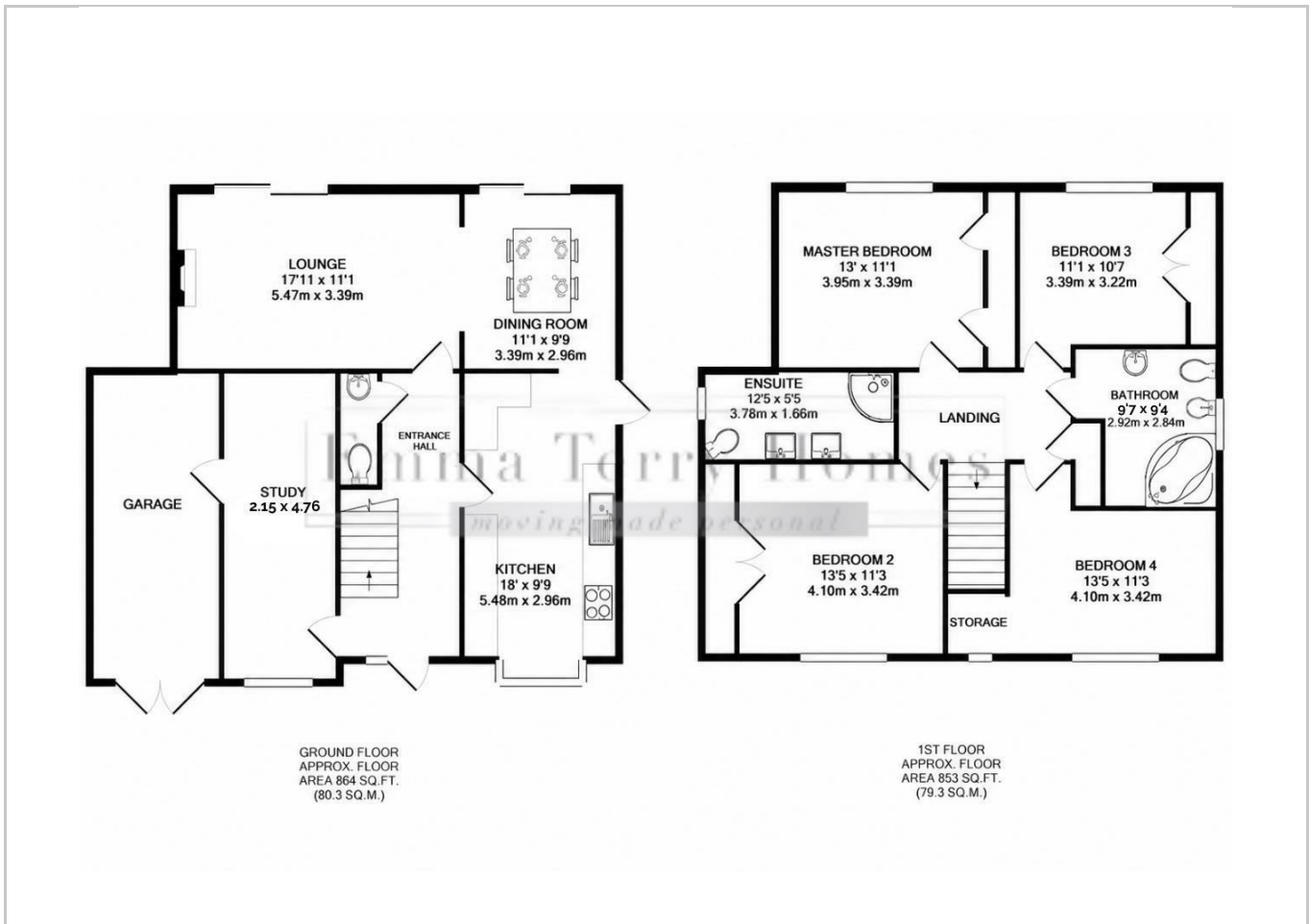
## Road Map



## Hybrid Map



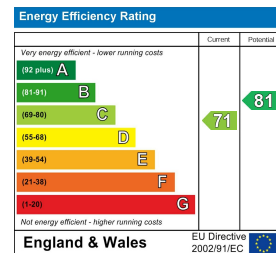
## Terrain Map



## Viewing

Please contact our Emma Terry Homes Office on 0115 966 57 41 if you wish to arrange a viewing appointment for this property or require further information.

## Energy Efficiency Graph



These particulars, whilst believed to be accurate are set out as a general outline only for guidance and do not constitute any part of an offer or contract. Intending purchasers should not rely on them as statements of representation of fact, but must satisfy themselves by inspection or otherwise as to their accuracy. No person in this firm's employment has the authority to make or give any representation or warranty in respect of the property.