



40 Horsetail Walk

Corby, NN17 5HH



Simpson West

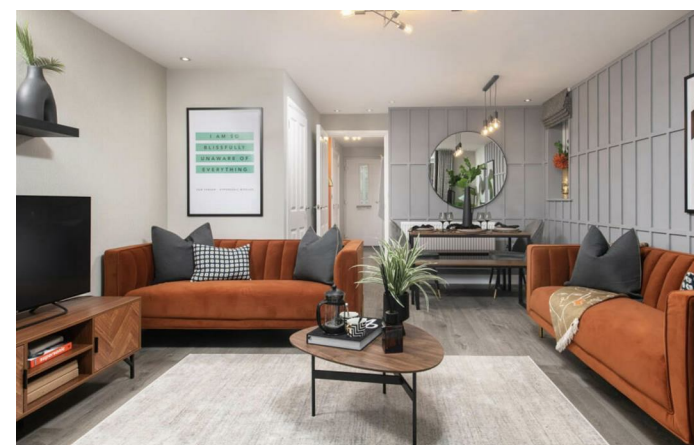
Plot 136 – The Norbury | End-Terraced Home Overlooking Open Space

Enjoy contemporary family living in The Norbury, an attractive three-bedroom end-terraced home ideally positioned overlooking open space.

The ground floor offers a welcoming open-plan lounge and dining area, with French doors opening directly onto the garden—perfect for everyday living and entertaining. A modern fitted kitchen sits to the front of the home, while useful under-stairs storage helps keep everything neatly organised.

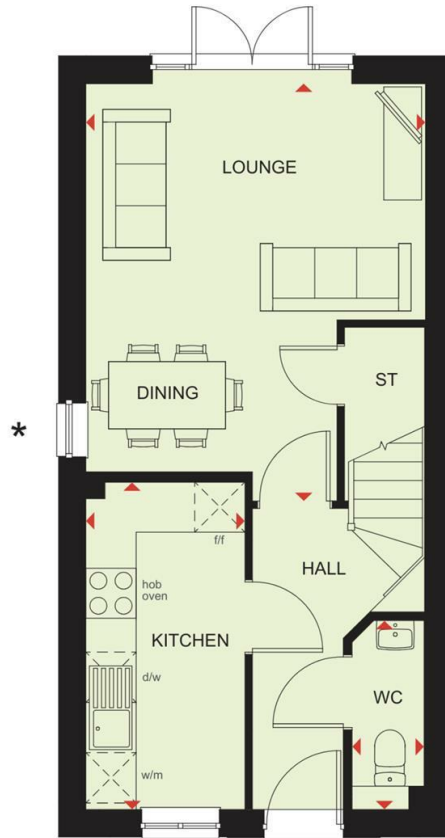
On the first floor, there are two generously sized double bedrooms alongside a stylish family bathroom. The entire top floor is dedicated to the impressive main bedroom suite, featuring a private en suite shower room and a separate dressing area for an added touch of luxury.

Designed with modern living in mind, this home also benefits from energy-efficient features, including PV solar panels and more, helping to support lower running costs.




£322,995





Energy Efficiency Rating

	Current	Potential
<i>Very energy efficient - lower running costs</i>		
(92 plus) A		
(81-91) B		
(69-80) C		
(55-68) D		
(39-54) E		
(21-38) F		
(1-20) G		
<i>Not energy efficient - higher running costs</i>		
England & Wales	EU Directive 2002/91/EC 	



When you buy with Simpson West, you know **you'll be in safe hands**. From the moment you walk through our doors, we'll make you **feel truly welcome**. Our sales consultants and financial advisors will take you through **every step of the process**, offering **free expert advice** along the way, from help choosing the right mortgage and insurance through to finding your conveyancer. And if you need help selling your home too, **with over 20 years of local experience, you can trust us to get you moving**.



**Simpson
West**

Making Every
Journey Personal



01536 202007

info@simpsonwest.co.uk

<https://www.simpsonwest.co.uk/>

64 Corporation Street, Corby, Northants, NN17 1NH