

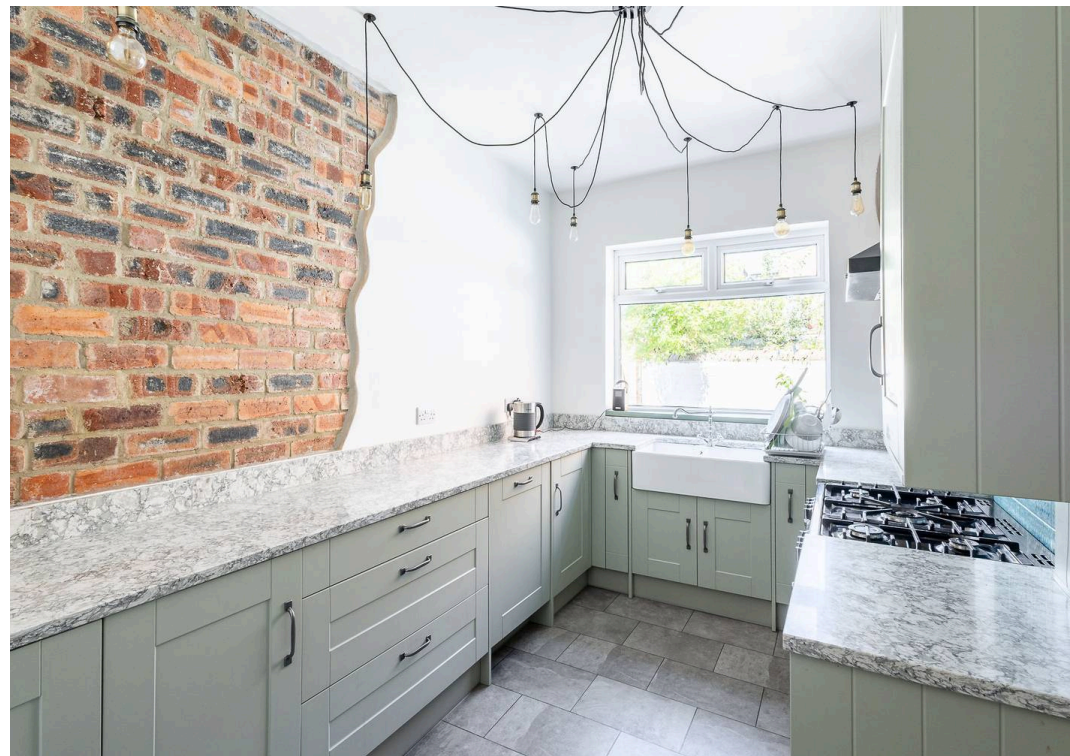
*Symonds  
Taylor*

**8 Cleveland Terrace, North Shields**

North Shields

Offers Over **£395,000**





# 8 Cleveland Terrace

## North Shields

This three storey mid terraced period family home is positioned on a prime street in a popular part of North Shields with generous room sizes, high ceilings that we know will appeal to a wide range of buyers on a regional level.

### Accommodation comprises:

**Ground floor:** Entrance vestibule, hallway, sitting room, dining room, kitchen, utility room.

**First floor:** Landing, principal bedroom, bedroom 2, bedroom 3, family bathroom.

**Second floor:** Landing, bedroom 4, study/dressing room.

**Outside:** Front town garden, rear courtyard, single garage.

Council Tax band: C

Tenure: Freehold

EPC Energy Efficiency Rating: E

EPC Environmental Impact Rating: E





**8 CLEVELAND TERRACE, NORTH SHIELDS, NE29 0NS**

APPROXIMATE GROSS INTERNAL AREA 184 SQ M 1984 SQ FT NOT TO SCALE - FOR ILLUSTRATIVE PURPOSES ONLY  
All measurements and fixtures including doors and windows are approximate and should be independently verified.





## Tynemouth

10 Front Street, Tynemouth, NE30 4RG

0191 3239141 • [coast@symondstaylor.co.uk](mailto:coast@symondstaylor.co.uk) • [www.symondstaylor.co.uk](http://www.symondstaylor.co.uk)

All descriptions, plans or references to condition are given in good faith only. Whilst every endeavour is made to ensure accuracy, please check with us on any points of especial importance to you.