



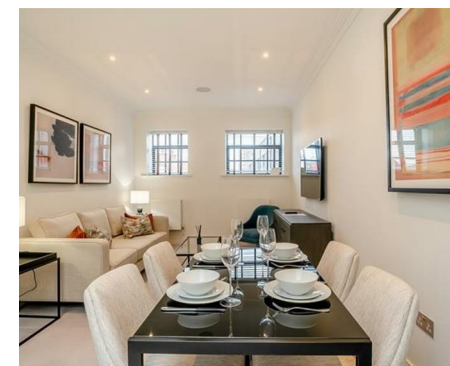
Let **UK** Home

2 Bedrooms

Flat

Located in London

£4,225 Per Month



info@letukhome.co.uk

<https://www.letukhome.co.uk/>

01795 358 886



Rainville Road London

W6 9UF



A stunning brand new interior designed, two bedroom, two bathroom second-floor apartment facing the courtyard set within this newly converted, warehouse style, gated development on the River Thames.

The apartment boasts a bright open plan kitchen and living area, two bedrooms with en suite bathrooms and separate WC. The fully fitted Metris Kitchen is complete with Miele appliances including an integrated dishwasher, washer/dryer, full height fridge freezer, oven, hob, and integrated extractor fan as well as a wine cooler. The bathrooms comprise of full bathroom suites with underfloor heating whilst the bedrooms boast bespoke mirrored wardrobes and automatic lighting. Further benefits of the apartment include a Crestron audio-visual system, a digital video door entry system, and pre-wiring for Sky + TV.

With its riverside location, Palace Wharf is also conveniently close to a number of transport links including Hammersmith Overground and Underground Station, Barons Court, Putney Bridge, and Fulham Broadway Underground Stations, along with several regular and varied bus services which further improve accessibility.

New build gated development | Riverside location

Warehouse conversion | Interior designed

On-site building manager | Secure parking available

CCTV | Key phone entry system

24-hour emergency & maintenance service | Available furnished or unfurnished

Flexible rental terms

Rainville Road London

£4,225 Per Month

- 2nd Floor
- Riverside location
- Flexible rental terms
- Secure parking available
- Key phone entry system

- New build gated development
- Warehouse conversion
- No agency fees
- CCTV
- EPC Rating: C





Let **UK** Home

3F 2 Eastbourne Terrace
 Paddington
 London
 W2 6LG

01795 358 886

info@letukhome.co.uk

Council Tax Band: F

Local Authority:

Agents Note: Whilst every care has been taken to prepare these particulars, they are for guidance purposes only. All measurements are approximate and are for general guidance purposes only and whilst every care has been taken to ensure their accuracy, they should not be relied upon and potential buyers/tenants are advised to recheck the measurements.

Energy Efficiency Rating		Current	Potential
Very energy efficient - lower running costs			
(92 plus) A			
(81-91) B			
(69-80) C		74	74
(55-68) D			
(39-54) E			
(21-38) F			
(1-20) G			
Not energy efficient - higher running costs			
England & Wales	EU Directive 2002/91/EC		

<https://www.letukhome.co.uk/>