



Guide Price
£350,000

Freehold

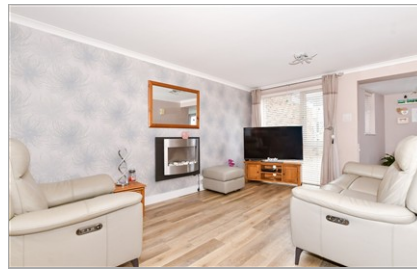
3x  1x  1x 

**Roman Road, Snodland,
Kent, ME6**

OVER 60?

Secure this property
for up to **59% less!**

Wards
Helping you move forwards



Main features

- Beautifully presented throughout and ready to move straight into
- Easy parking on the handy driveway
- The double storey extension makes this home so spacious
- Peaceful position with all amenities within walking distance
- Fantastic downstairs living space which is perfect for family life

Accommodation

GROUND FLOOR

- Entrance Hall: 11'6 x 6'0 (3.51m x 1.83m)
- Office/Storage Room: 9'3 x 7'6 (2.82m x 2.29m)
- Lounge/Diner: 24'8 x 11'5 (7.52m x 3.48m)
- Kitchen/Family Area: (L-shaped) 17'11 x 15'7 (5.46m x 4.75m) plus 6'10 x 6'0 (2.08m x 1.83m)

FIRST FLOOR

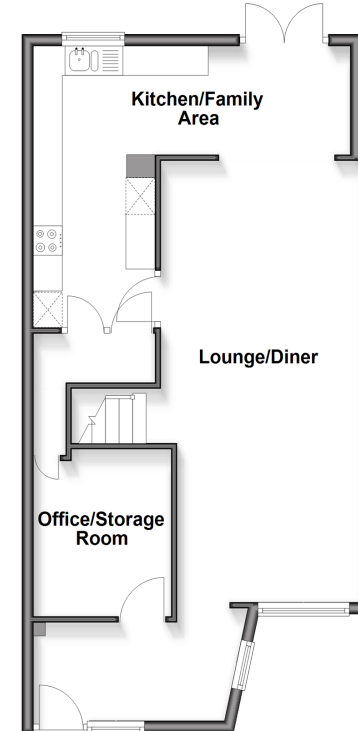
- Landing
- Bedroom 1: 17'2 x 11'10 (5.24m x 3.61m)
- Bedroom 2: 12'2 x 9'10 (3.71m x 3.00m)
- Bedroom 3: 8'7 x 8'6 (2.62m x 2.59m)
- Wet Room: 16'5 x 6'8 (5.01m x 2.03m)

OUTSIDE

- Driveway
- Rear Garden

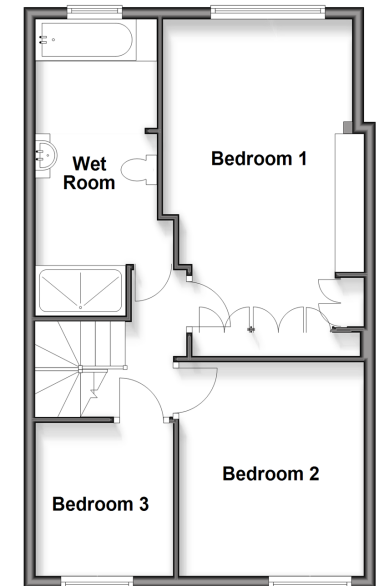
Ground Floor

Approx. 60.4 sq. metres (650.6 sq. feet)



First Floor

Approx. 54.5 sq. metres (586.3 sq. feet)



Call Snodland - 01634 245055 ■ wardsofkent.co.uk

■ Through a Homewise Home For Life Plan people aged 60+ can secure this property for up to 59% less, by purchasing a Lifetime Lease



13821920/20260404/TT/LK