

****AVAILABLE NOW****



House - Terraced

**47 SANDBEDS
ROAD,
WILLENHALL,
WV12 4HH**

£950 PCM

FEATURES

- High Specification Kitchen
- Available Now!
- On Road Parking Available
- 2 Spacious Bedrooms With Storage
- Private Garden/Patio
- Modernised Throughout



2 Bedroom House - Terraced located in Willenhall

Nestled on the charming Sandbeds Road in Willenhall, this delightful terraced house offers a perfect blend of character and modern living. The property boasts a rich history while providing ample space for comfortable living. Spanning an impressive 936 square feet, this home features two inviting reception rooms, ideal for entertaining guests or enjoying quiet evenings with family.

The property comprises two well-proportioned bedrooms, providing a restful retreat for all occupants. The bathroom is conveniently located, ensuring ease of access for both residents and visitors alike. The layout of the house is thoughtfully designed, making the most of the available space and creating a warm, welcoming atmosphere.

Willenhall is a vibrant area with a strong sense of community, offering a range of local amenities, including shops, schools, and parks, all within easy reach. The location is well-connected, making it an excellent choice for those commuting to nearby towns or cities.

This terraced house on Sandbeds Road presents a wonderful opportunity for first-time buyers, small families, or investors looking to add to their portfolio. With its charming features and prime location, this property is sure to attract interest. Do not miss the chance to make this lovely house your new home.

Call us on

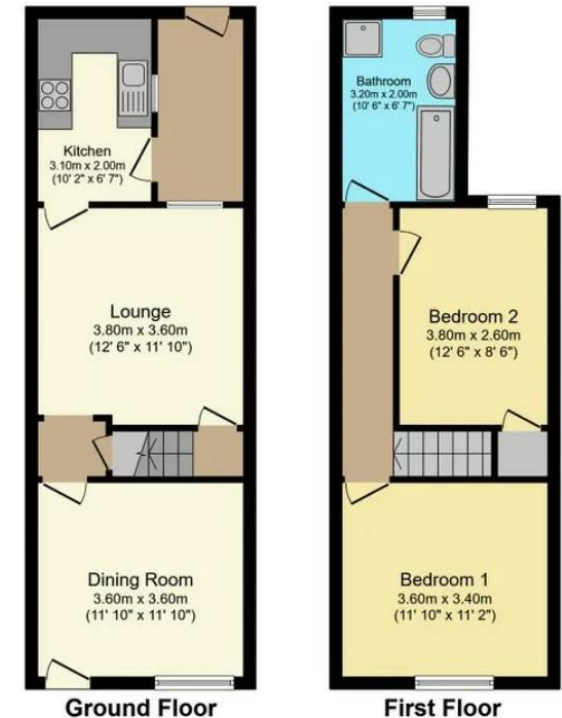
0121 667 0343

hello@swift-property.co.uk

www.swift-property.co.uk

Council Tax Band

A



Agents Note: Whilst every care has been taken to prepare these particulars, they are for guidance purposes only. All measurements are approximate and are for general guidance purposes only and whilst every care has been taken to ensure their accuracy, they should not be relied upon and potential buyers are advised to recheck the measurements.