

**D**avis  
**L**und

Appletree Road  
Sowerby  
Thirsk  
YO7 3SW

Offers Over £390,000







## Accommodation

A fantastic four double bedroom modern detached family home, occupying a prime plot on a highly desirable development, being set back from the road and also enjoying a good size enclosed rear garden.

Constructed in 2019, the property reveals a stunning show house quality interior, being beautifully decorated and finished, whilst also immaculate throughout. The improvements have not stopped inside, as two extensive patio seating areas have also been added to the landscaped garden, one being fully covered with a substantial gazebo, making it ideal for all year round entertainment.

On the ground floor the main entrance door leads into the entrance hall, with stairs rising to the first floor, under stairs storage and a cloakroom/WC. The living room is a good size, offering a large bay window. The fantastic open plan kitchen/diner/family room is to the rear of the house, with double doors leading seamlessly to the outside space. The kitchen comes fitted with a range of stylish units, whilst it also incorporates some integrated appliances. To the first floor, there is a landing with access to the boarded loft and an airing cupboard, main bedroom with a stylish ensuite and fitted wardrobes, three further double bedrooms and the house bathroom, fitted with a white suite and also offering a storage cupboard.

Externally there is an open lawned garden to the front of the house, whilst the driveway provides parking for numerous vehicles and gives access to the single integral garage. Gated access is available to the lovely size enclosed rear garden, which attracts a lot of sunshine and is very pet and child friendly. The garden is part laid to lawn, whilst there are numerous patio seating options, including a covered entertainment area.

Situated on a recently constructed development in the sought after Sowerby part of Thirsk, the house is ideally placed for local schools, shops and leisure facilities. There is ease of access to the A19 and A1M, whilst Thirsk train station is also just a short drive away.

The property boasts the modern features you would expect from a recently built home, including gas central heating and double glazing, both of which help to give a high energy efficiency rating. The house also benefits from the balance of the new build warranty.

An early viewing is advised on this lovely family home, which really does need to be viewed internally, to be appreciated.

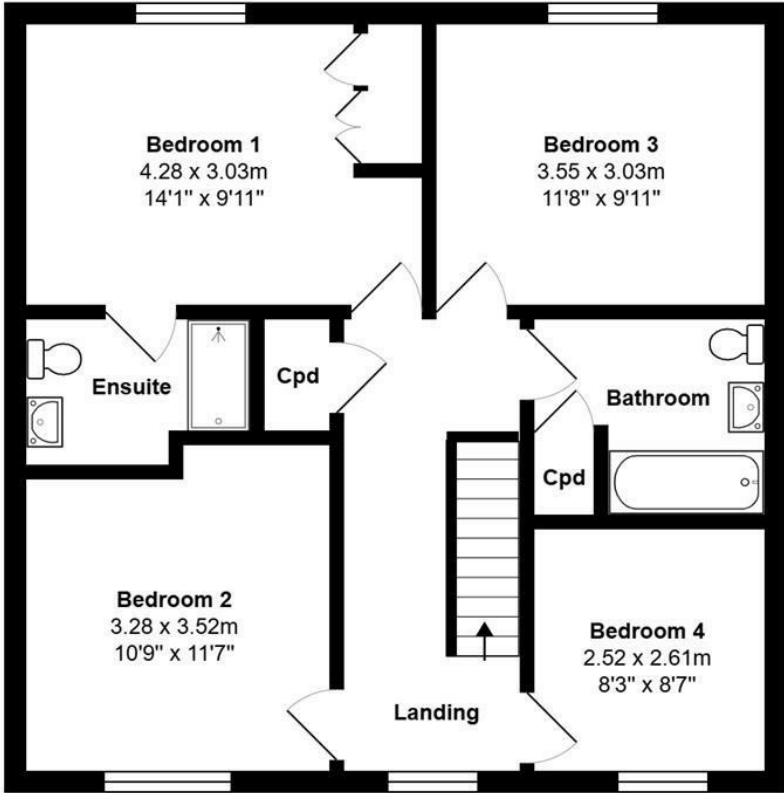
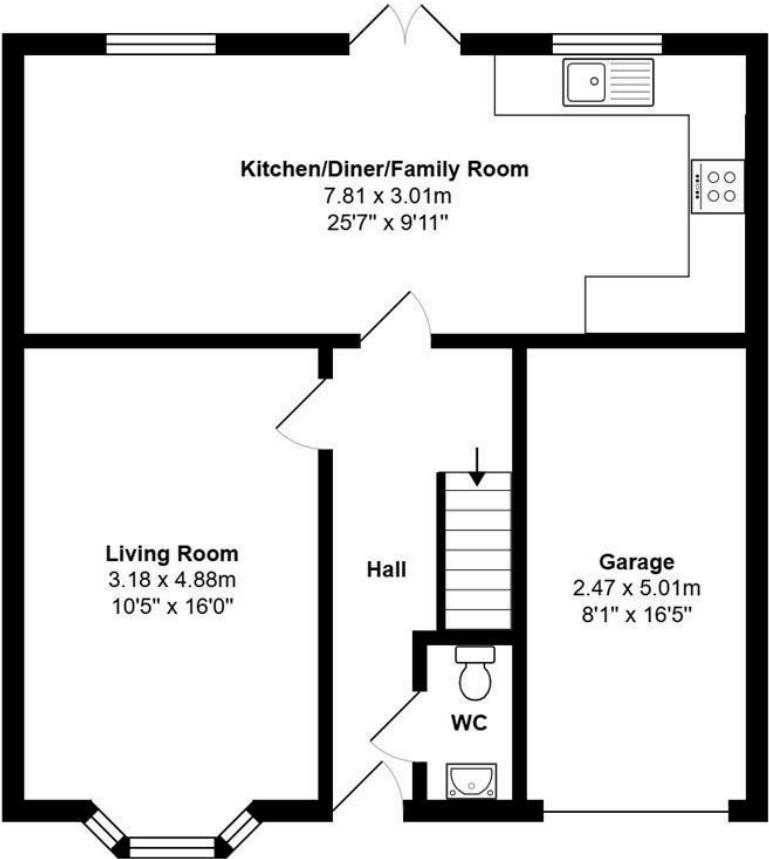








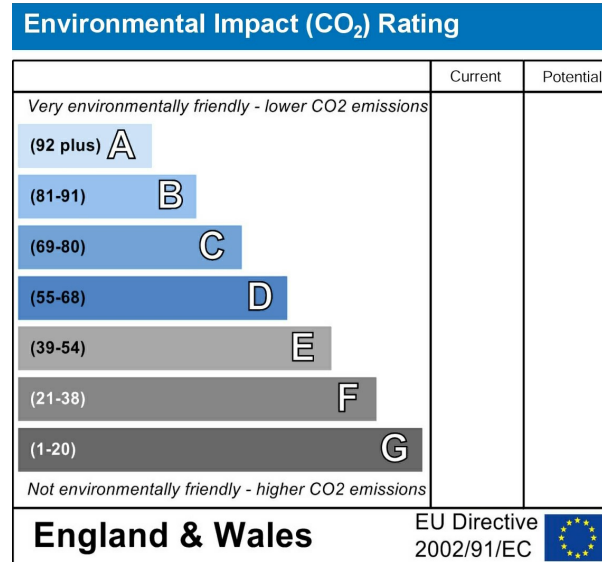
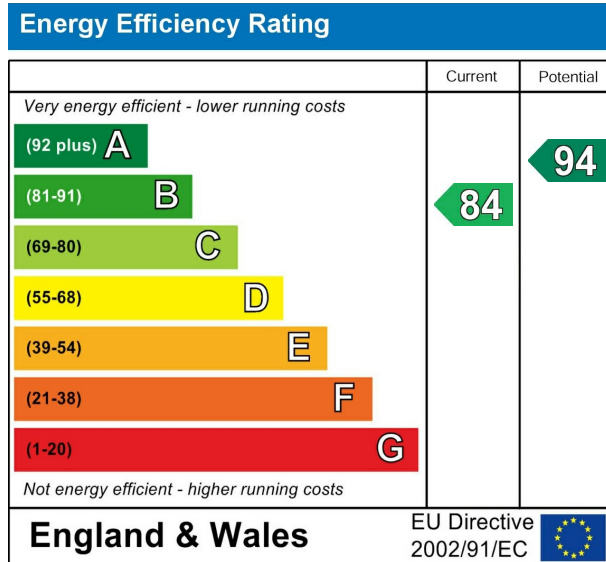
Floorplan







EPC



VIEWING BY APPOINTMENT ONLY - 01845 421010 - [sales@davislund.co.uk](mailto:sales@davislund.co.uk) - [www.davislund.co.uk](http://www.davislund.co.uk)

**MONEY LAUNDERING REGULATIONS 2003** - Intending purchasers will be asked to produce identification and proof of financial status when an offer is received. We would ask for your co-operation in order that there will be no delay in agreeing the sale.

Davis & Lund Ltd trading as Davis & Lund, registered office: 5a Kirkgate, Ripon, HG4 1PA. Registered in England No 10034416. Registered for VAT No 243 2008 51

Davis & Lund Ltd have prepared these property details on the seller's behalf. Davis & Lund Ltd have taken reasonable steps to check the content, but no information should be taken as a statement of fact. All measurements are approximate and should be taken as a guide, potential purchasers should satisfy themselves as to the accuracy. Floorplans are produced as a guide and they are not to scale. All fixtures and fittings are not included in the sale, unless stated. Heating systems, electrics, services and appliances have not been tested and no warranty is given to their working order

