



BEDROOMS

1

BATHROOMS

1

RECEPTION ROOMS

1

COUNCIL TAX

A

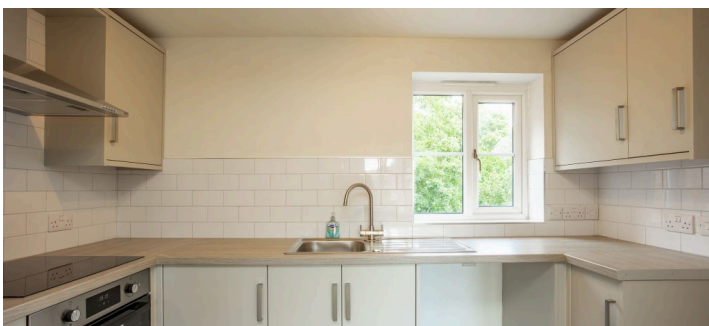
KEY FEATURES

- Situated in a peaceful cul-de-sac within the desirable village of Rothley
- A beautifully decorated, impeccably maintained one double bedroom coach house
- Boasts a contemporary, bright, and spacious kitchen along with a separate living area
- New Kitchen, bathroom, carpets and decor
- Allocated parking to the rear
- No management fees or lease
- Gas central heating- combi boiler
- Available with NO UPWARD chain

PROPERTY OVERVIEW

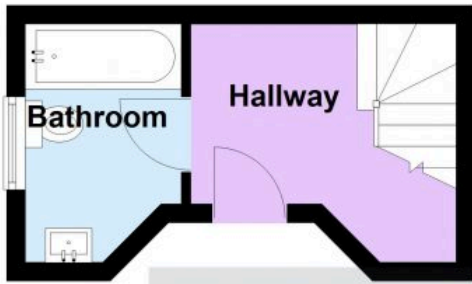
Creightons Estate Agents are pleased to introduce this beautifully maintained one double bedroom coach house style home, perfectly positioned within a peaceful cul-de-sac in the highly desirable village of Rothley. Offering an ideal blend of tranquillity and convenience, the property sits within easy reach of both Rothley and Mountsorrel village centres, providing a fantastic range of local amenities, eateries and everyday essentials. Thoughtfully presented throughout, this charming residence is an excellent choice for first-time buyers, downsizers, investors, or anyone seeking a well-connected home in a sought-after location. With its manageable layout and welcoming feel, it's perfectly suited to a single occupant or couple looking to take their first step onto the property ladder.

ADDITIONAL PHOTOGRAPHY



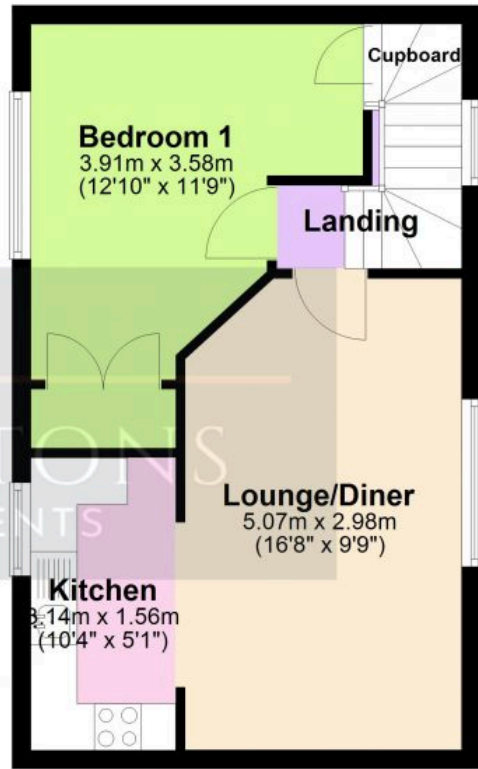
Ground Floor

Approx. 10.4 sq. metres (112.1 sq. feet)



First Floor

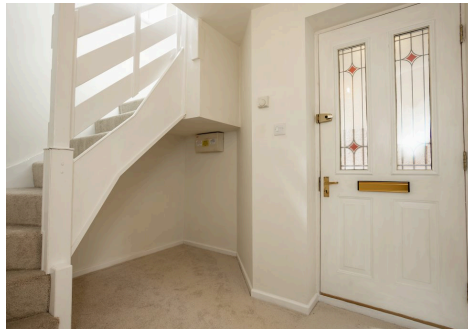
Approx. 36.2 sq. metres (389.6 sq. feet)



Total area: approx. 46.6 sq. metres (501.7 sq. feet)

Floor plans are not to scale and are intended for use as a guide to the layout of the property only. They should not be used for any other purpose.
Plan produced using PlanUp.

14 The Pyke, Rothley



No EPC image found.

