

# Wick Road

## BRISLINGTON

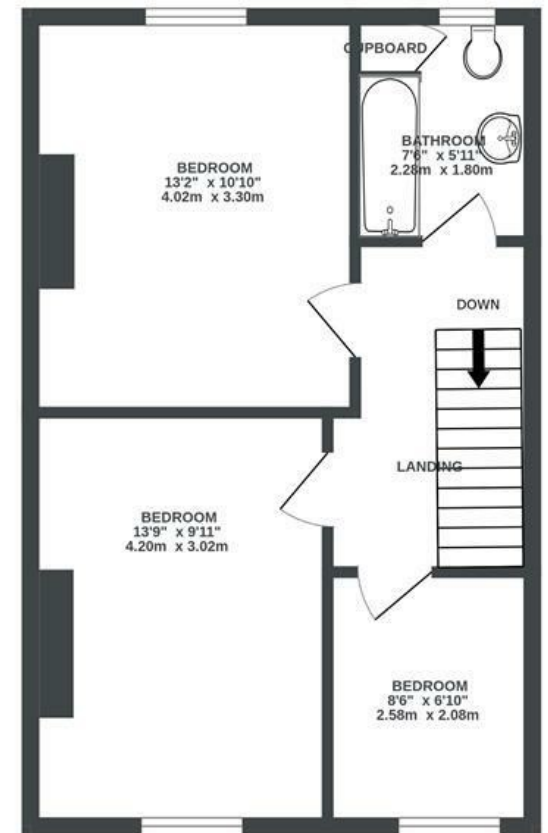
APPROXIMATE FLOOR AREA  
72.5 SQM / 781 SQFT



GROUND FLOOR



1ST FLOOR



Boardwalk

# Wick Road , BRISTOL

£

£400,000



BS4 4HN

zzz

3 Bedrooms



1 Bathrooms

*"We have lived on Wick Road for nine years now and will be very sad to leave our lovely neighbours and this great community. Our home is bright and full of character, with a lovely combination of modern and Victorian touches. Brislington is also an ideal location, with beautiful woods and parks right on our doorstep, a vibrant high street full of independent shops, and the train station just a thirty minute walk or ten minute bus ride away. This really has been the perfect first home for us and a wonderful place to raise our daughters."*

